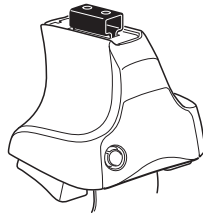
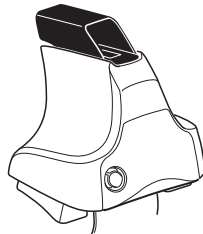
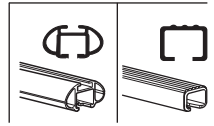


Kit 1681

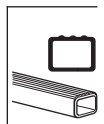
MINI Cooper, 3-dr Hatchback, 02-06, 07-



754 Rapid System
480R Rapid Traverse (North America)



480 Traverse (North America)

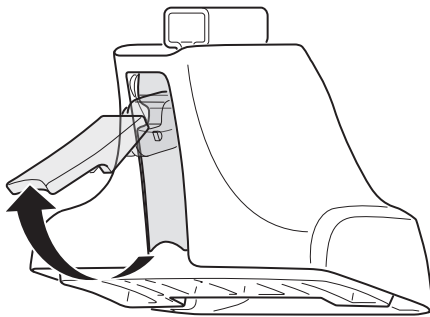


- 754 Rapid System: x1 (box), x4 (ruler), x4 (mounting plate), x4 (screw)
- 480R Rapid Traverse (North America): x1 (ruler), x4 (mounting plate), x4 (screw)
- 480 Traverse (North America): x1 (ruler), x4 (mounting plate), x4 (screw)

- Hardware: x2 (bracket), x2 (rod), x2 (rod), x4 (nut), x4 (washer)
- Hardware: x2 (rod), x2 (rod), x2 (rod), x4 (nut), x4 (washer)
- Hardware: x1 (rod), x2 (rod), x2 (rod), x2 (rod), x4 (nut), x4 (washer)
- (North America): x2 (rod), x2 (rod), x2 (rod), x2 (rod), x2 (rod)

- 1240 x4 (bracket)
- 182 x4 (bracket)
- 52269 x1 (screw)
- 52306 x4 (rod)
- Diagram with labels: RR, FR, FL, RL, x1

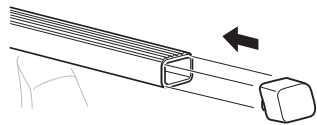
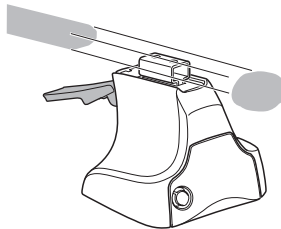
1



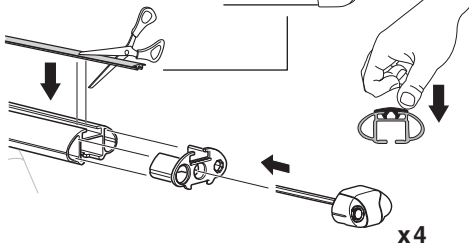
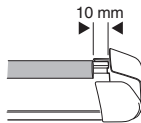
2



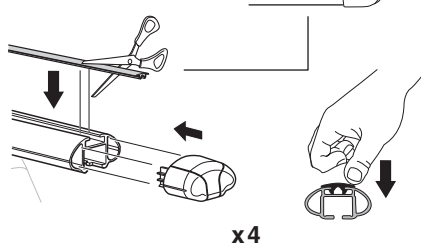
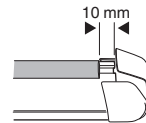
754 Rapid System
480R Rapid Traverse
(North America)



x4



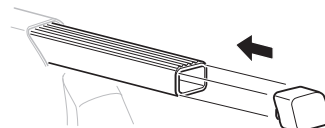
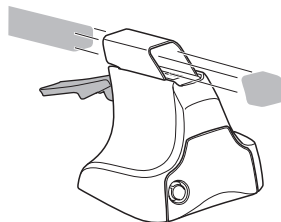
x4



x4

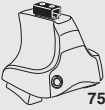


480 Traverse
(North America)

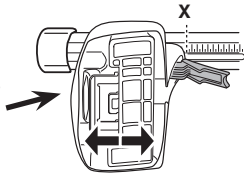


x4

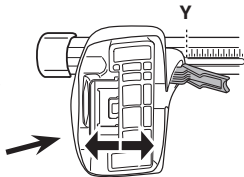
3



754 Rapid System



	X
MINI Cooper, 3-dr Hatchback, 02-06, 07-	31



	Y
MINI Cooper, 3-dr Hatchback, 02-06, 07-	31

3



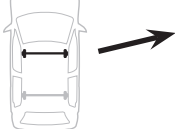
480R Rapid Traverse



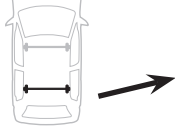
480 Traverse



(North America)

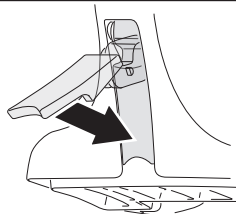


	X inch	X mm
MINI Cooper, 3-dr Hatchback, 02-06, 07-	37 ⁷/₈"	961 mm



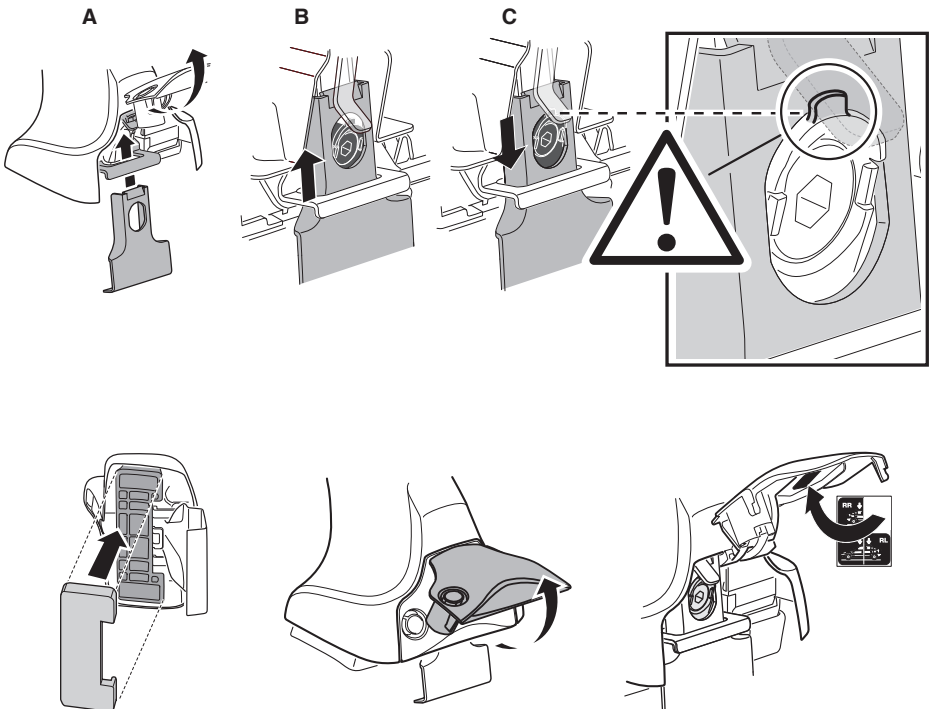
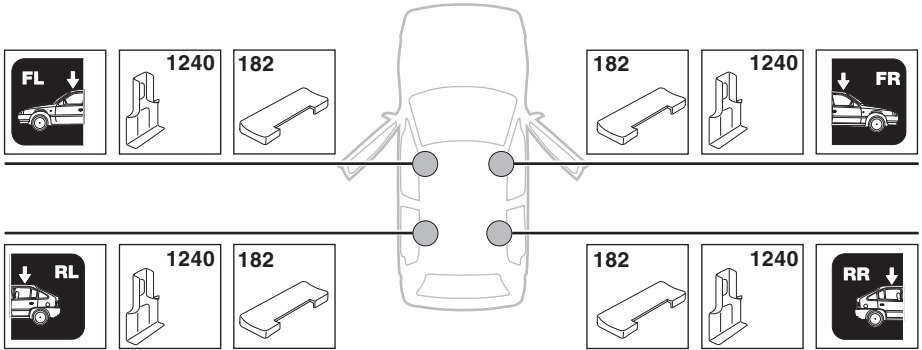
	Y inch	Y mm
MINI Cooper, 3-dr Hatchback, 02-06, 07-	37 ⁷/₈"	961 mm

4



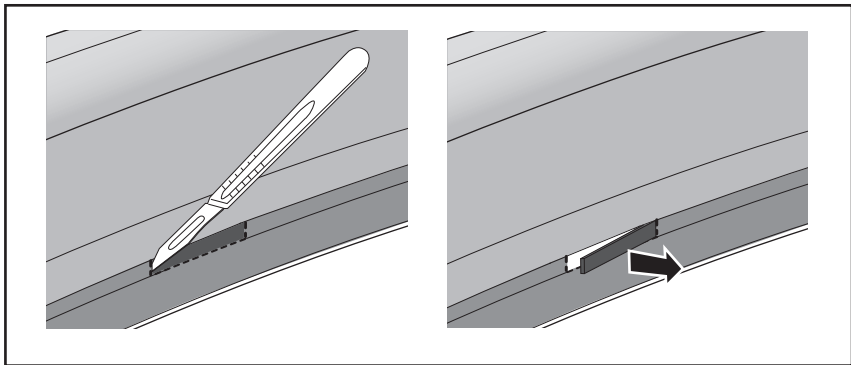
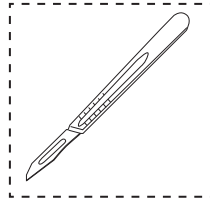
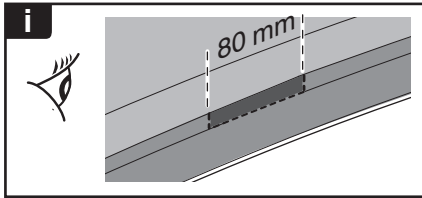
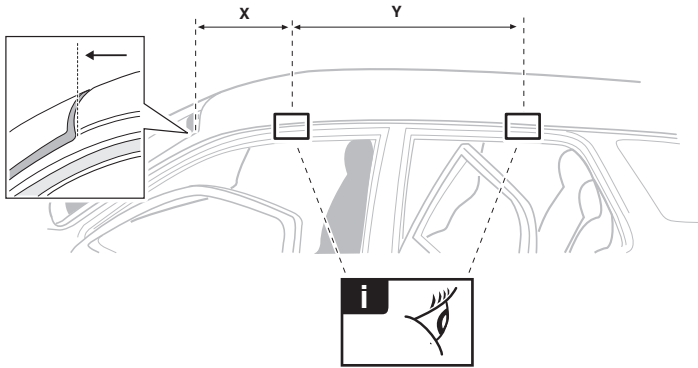
5

MINI Cooper, 3-dr Hatchback, 02-06, 07-

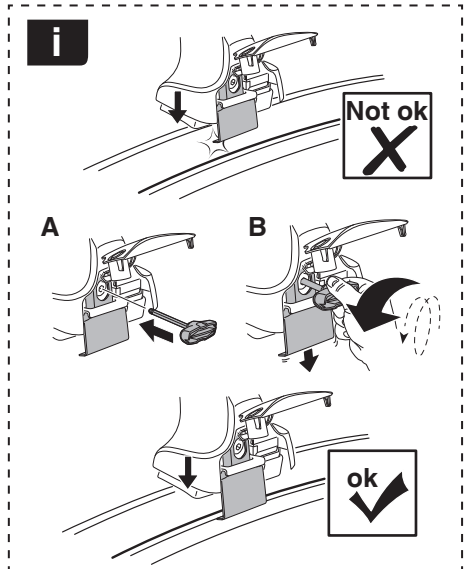
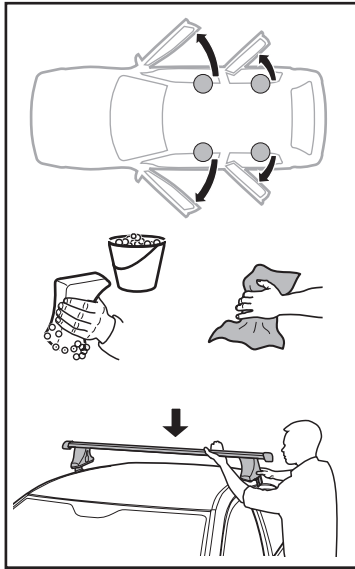


6

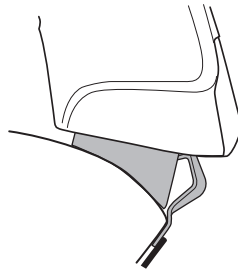
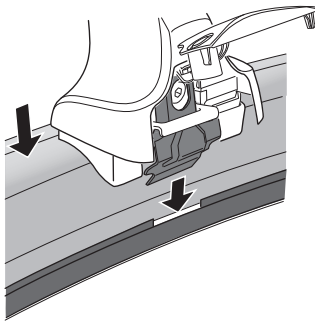
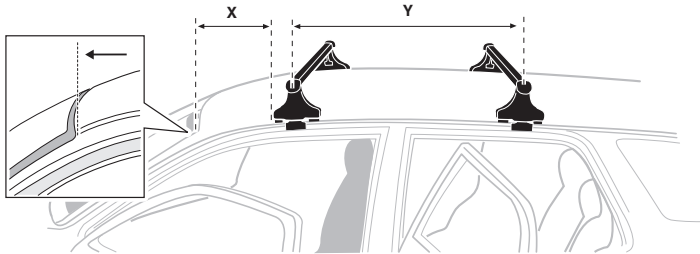
	X mm	Y mm	X inch	Y inch
MINI Cooper, 3-dr Hatchback, 02-06, 07-	400 mm	680 mm	15 ³ / ₄ "	26 ³ / ₄ "

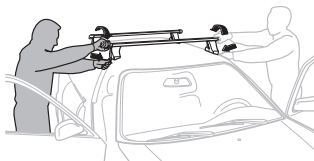


7



	X mm	Y mm	X inch	Y inch
MINI Cooper, 3-dr Hatchback, 02-06, 07-	330 mm	680 mm	13"	26 3/4"



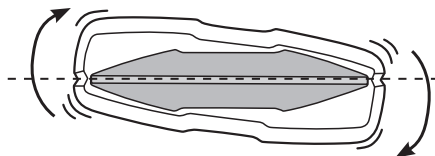
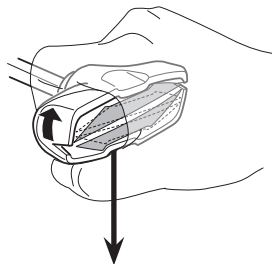
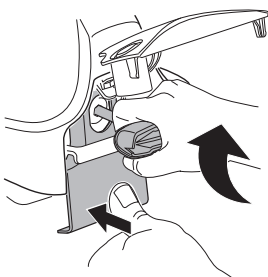
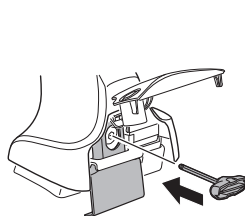
8

EN Tighten alternately
 DE Die Schrauben abwechselnd anziehen
 FR Serrer alternativement chaque côté
 NL Afwisselend aan de linker- en de rechterkant aandraaien
 IT Alternare il serraggio delle viti
 ES Apretar alternativamente
 PT Aperte alternadamente
 SV Dra åt växelvis
 DK Spænd skiftevis
 NE Trekk til vekselvis
 FI Kierrä vuorotellen
 ET Pinguldage vaheldumisi
 LV Pievelciēt pamišus
 LT Užsukinėkite pakaitomis
 PL Śruby dokręcaj naprzemiennie

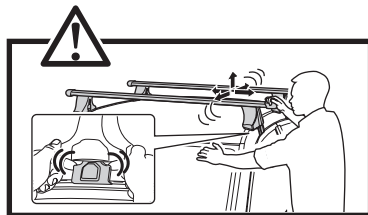
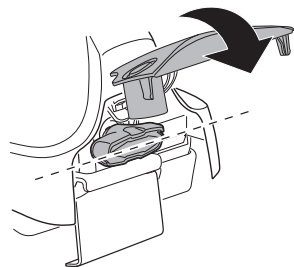
RU Затягивайте попеременно
 UK Затягти почергово
 BG Затегнете последователно
 CS Pokręťta багаžníka dokręcaj dokręcaj naprzemiennie.
 SK Dofahujte striedavo
 SL Privijajte izmenično.
 HR/BIH Naizmjenično zategnite
 HU Egymástól függetlenül szorítandó
 EL Σφίγγετε εναλλάξ
 TR Dönuşümüli sakin

إحكام الربط بالتناوب
 חזק לסיבוב HE

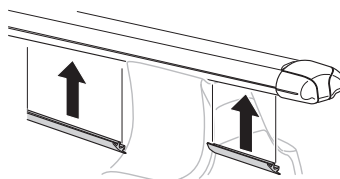
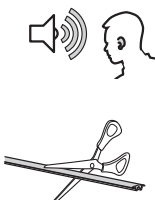
ZH 交替拧紧
 JA 自動固定
 KO 번갈아 조이기
 TH ชั่งน้ำหนักสลับ



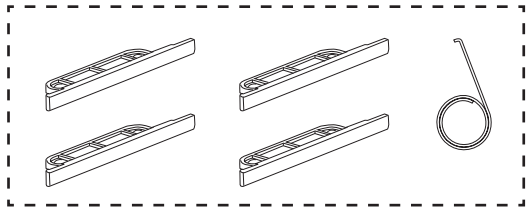
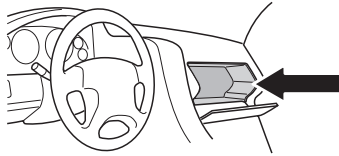
≈ 3 Nm

**9**

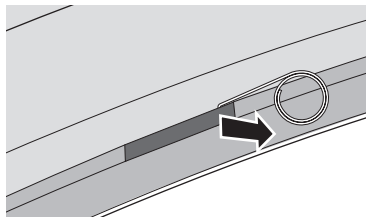
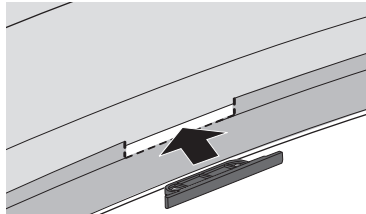
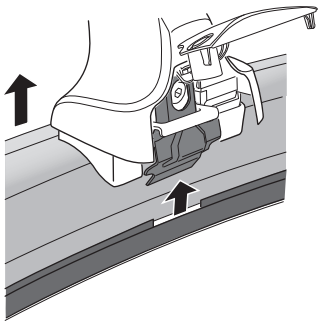
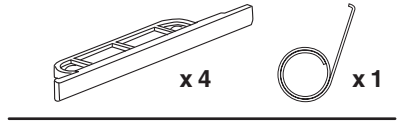
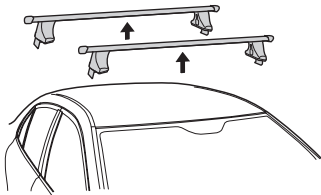
x1
17 mm

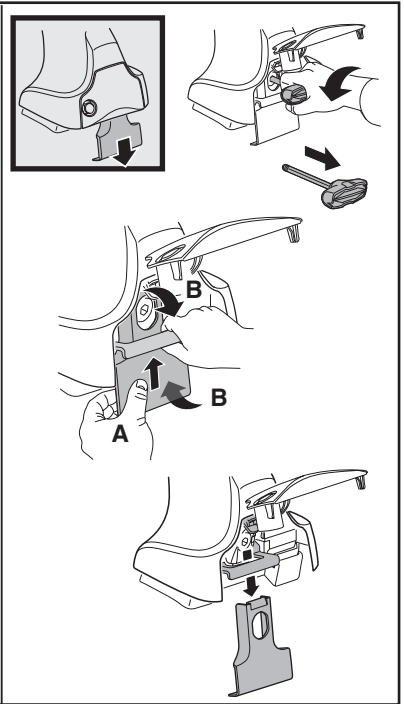
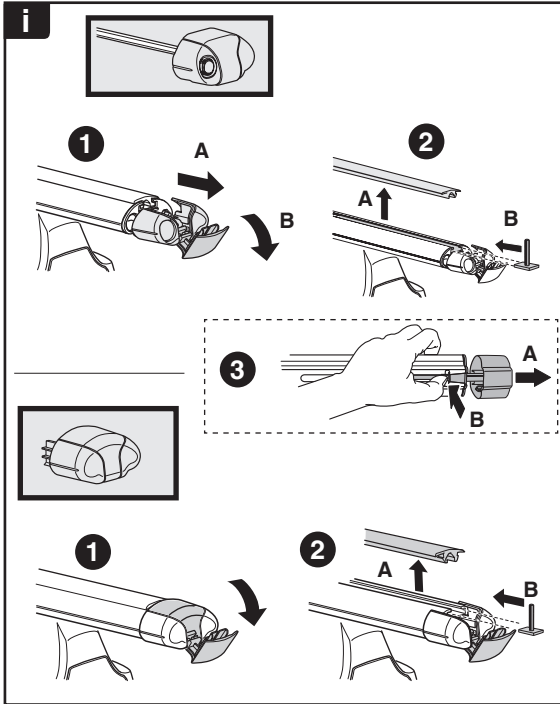
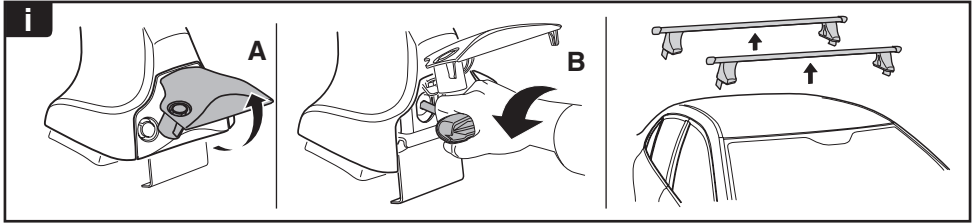


i

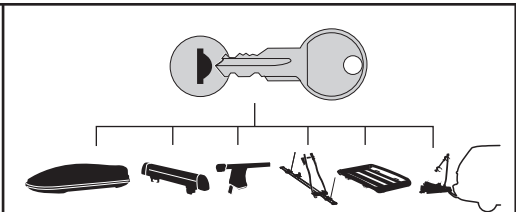


i

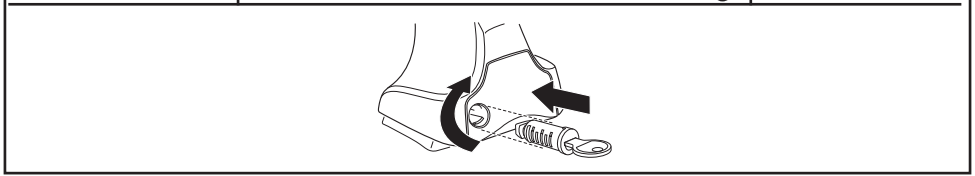




THULE
SWEDEN
**ONE
KEY
SYSTEM**



		(x4)
		(x6)
		(x8)
NA		(x10)
EUR		(x12)
ASIA		



WW ▶ Thule Sweden AB, Box 69, 330 33 Hillerstorp, SWEDEN
NA ▶ Thule Inc., 42 Silvermine Road, Seymour, Connecticut 06483, USA

info@thule.com
customer.service@thule.com

www.thule.com