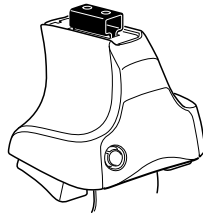


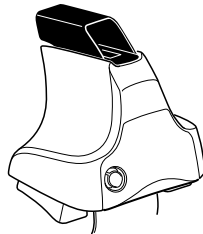
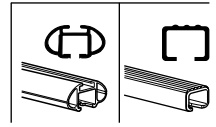
# Kit 1567

HONDA Accord, 4-dr Sedan, \*98-02

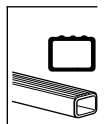
\*North America



754 Rapid System  
480R Rapid Traverse (North America)



480 Traverse (North America)

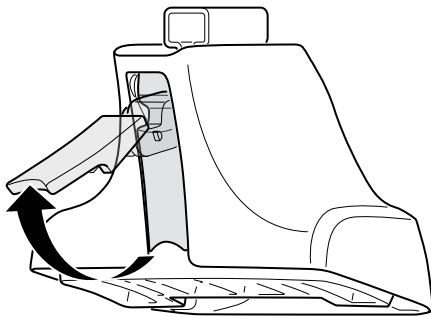


- 754 Rapid System: x1 (box), x4 (cubes), x4 (480R Rapid Traverse (North America)), x4 (screws)
- 480R Rapid Traverse (North America): x1 (ruler), x4 (754 Rapid System), x4 (480 Traverse (North America)), x4 (screws)

- Bar: x2
- Hardware: x2 (23 mm), x2 (23 mm), x4 (screws), x4 (screws)
- Hardware: x1 (17 mm), x2 (23 mm), x2 (23 mm), x4 (screws)
- (North America): x2 (23 mm), x2 (23 mm), x2 (23 mm), x2 (bar), x2 (bar)

- Foot: x4 (595)
- Plate: x4 (15)
- Diagram: x1 (RR, FR, FL, RL)

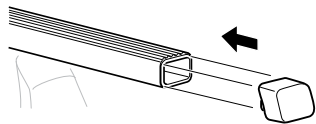
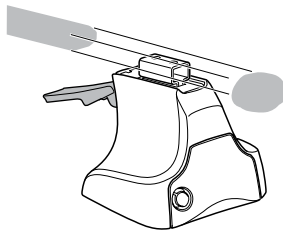
1



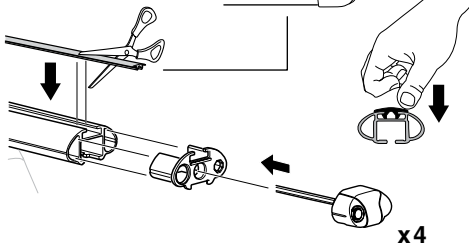
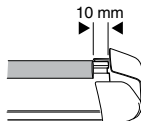
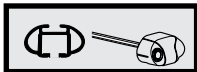
2



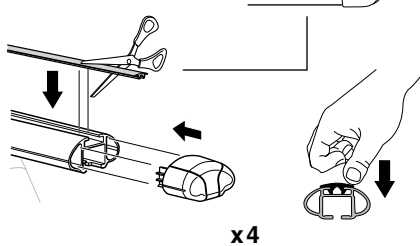
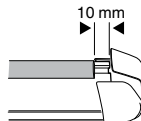
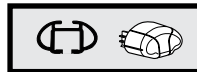
754 Rapid System  
480R Rapid Traverse  
(North America)



x4



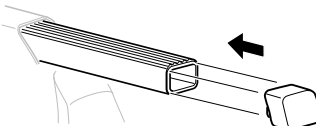
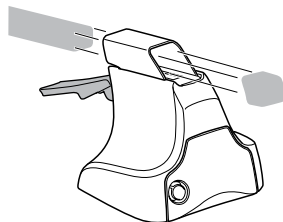
x4



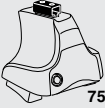
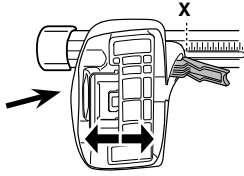
x4



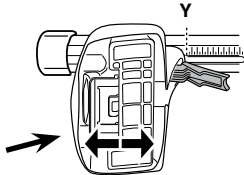
480 Traverse  
(North America)



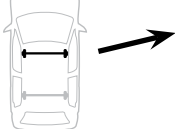
x4

**3****754** Rapid System

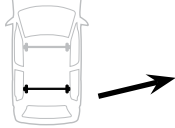
	<b>X</b>
<b>HONDA Accord, 4-dr Sedan, *98-02</b>	<b>31,5</b>



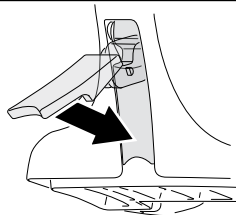
	<b>Y</b>
<b>HONDA Accord, 4-dr Sedan, *98-02</b>	<b>29</b>

**3****480R** Rapid Traverse**480** Traverse**(North America)**

	<b>X inch</b>	<b>X mm</b>
<b>HONDA Accord, 4-dr Sedan, *98-02</b>	<b>38"</b>	<b>965 mm</b>

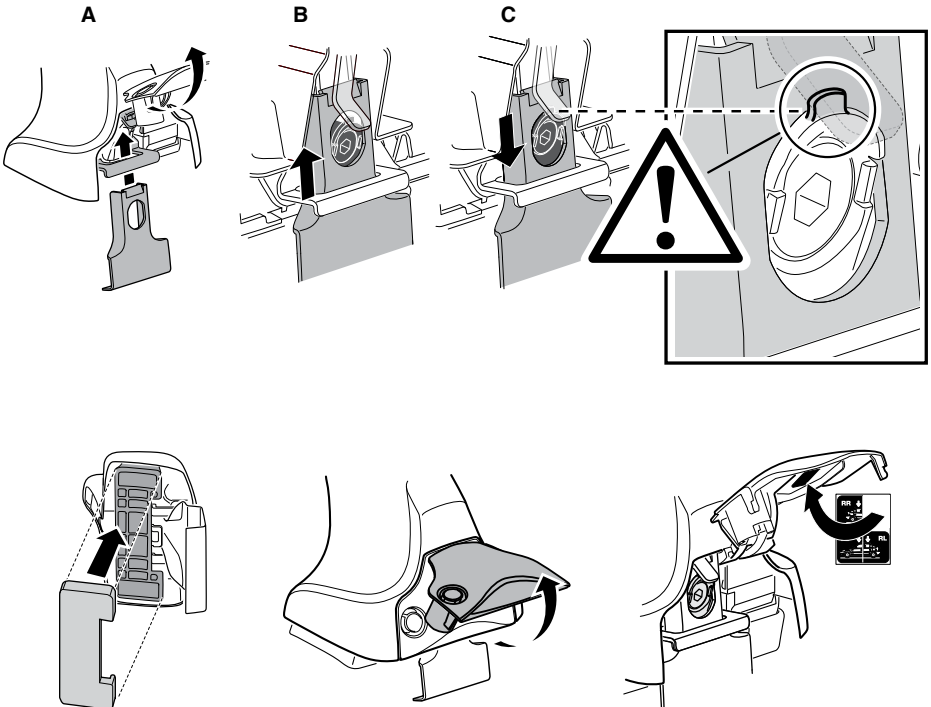
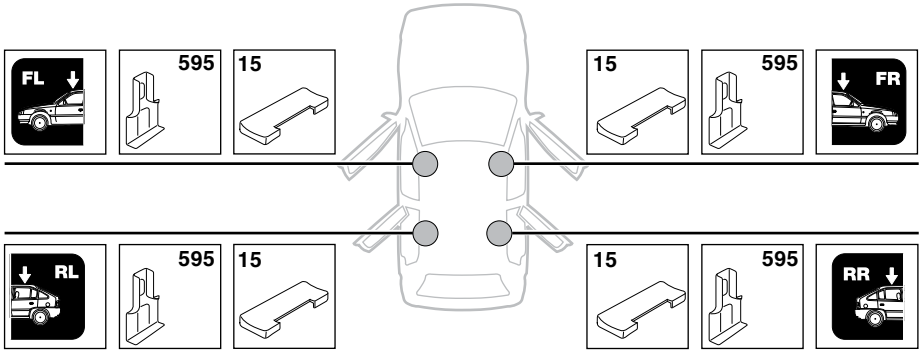


	<b>Y inch</b>	<b>Y mm</b>
<b>HONDA Accord, 4-dr Sedan, *98-02</b>	<b>37"</b>	<b>940 mm</b>

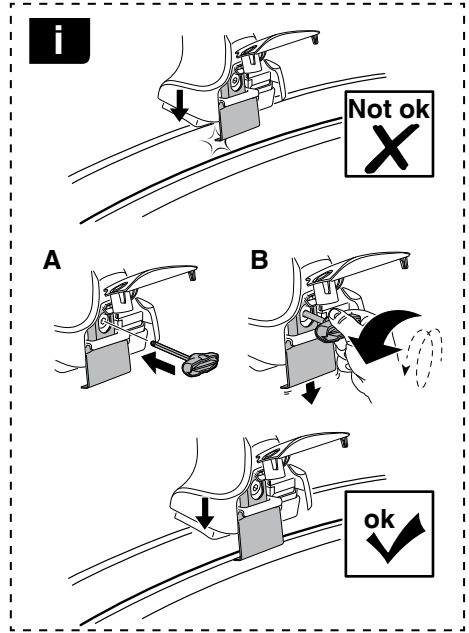
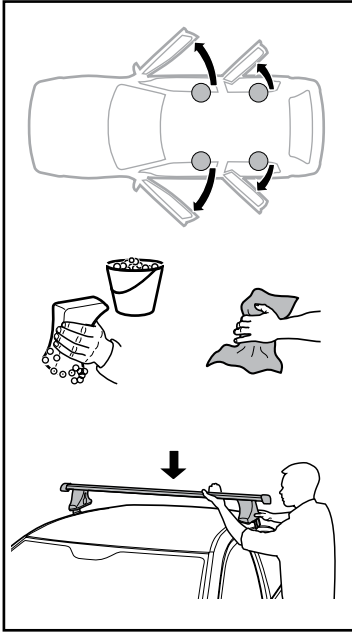
**4**

# 5

HONDA Accord, 4-dr Sedan, \*98-02



6



HONDA Accord, 4-dr Sedan, \*98-02

X mm

Y mm

X inch

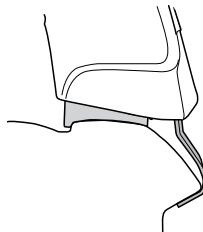
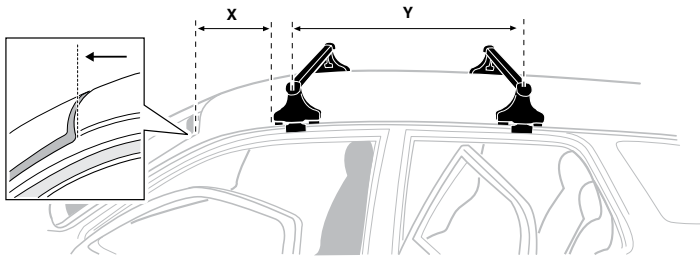
Y inch

255 mm

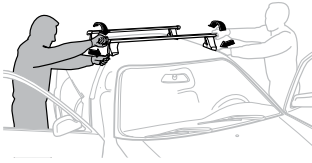
624 mm

10 "

24 1/2 "



7



<b>GB/US</b>	Tighten alternately
<b>D</b>	Die Schrauben abwechselnd anziehen
<b>F</b>	Serrer alternativement chaque côté
<b>NL</b>	Afwisselend aan de linker- en de rechterkant aandraaien
<b>I</b>	Alternare il serraggio delle viti
<b>E</b>	Apretar alternativamente
<b>PT</b>	Aperte alternadamente
<b>S</b>	Dra åt växelvis
<b>FIN</b>	Kierrä vuorotellen
<b>EST</b>	Pinguldage vaheldumisi
<b>LAT</b>	Pielveiciet pamišus
<b>LIT</b>	Užsukinėkite pakaitomis
<b>PL</b>	Śruby dokręcaj naprzemiennie
<b>RU</b>	Затягивайте попеременно

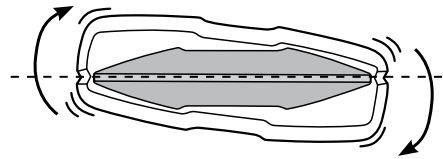
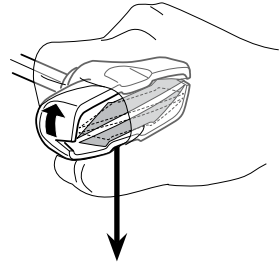
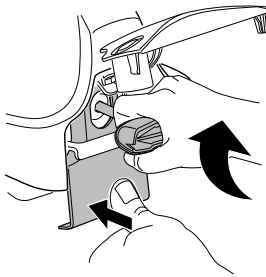
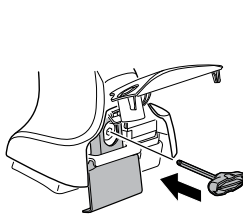
<b>CZ</b>	Pokręřta bagažníka dokręřcaj dokręřcaj naprzemiennie.
<b>SK</b>	Dofahajte striedavo
<b>SLO</b>	Privijajte izmenično.
<b>HR</b>	Naizmjenično zategnite
<b>HU</b>	Egymástól függetlenül szorítandó
<b>GR</b>	Σφιγίγες ενολάξ
<b>TR</b>	Dönüşümlü sıkın

**中文** 交替拧紧

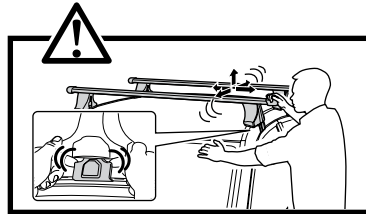
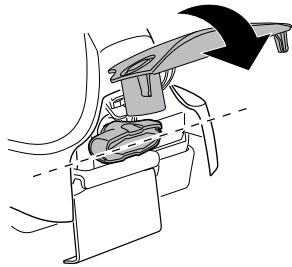
**한국어** 번갈아 가며 조이십시오.

**日本語** 交互に締め付けてください。

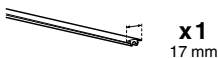
**ไทย** ชันในแบบสลับ



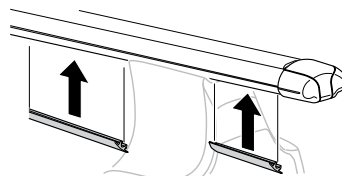
≈ 3 Nm

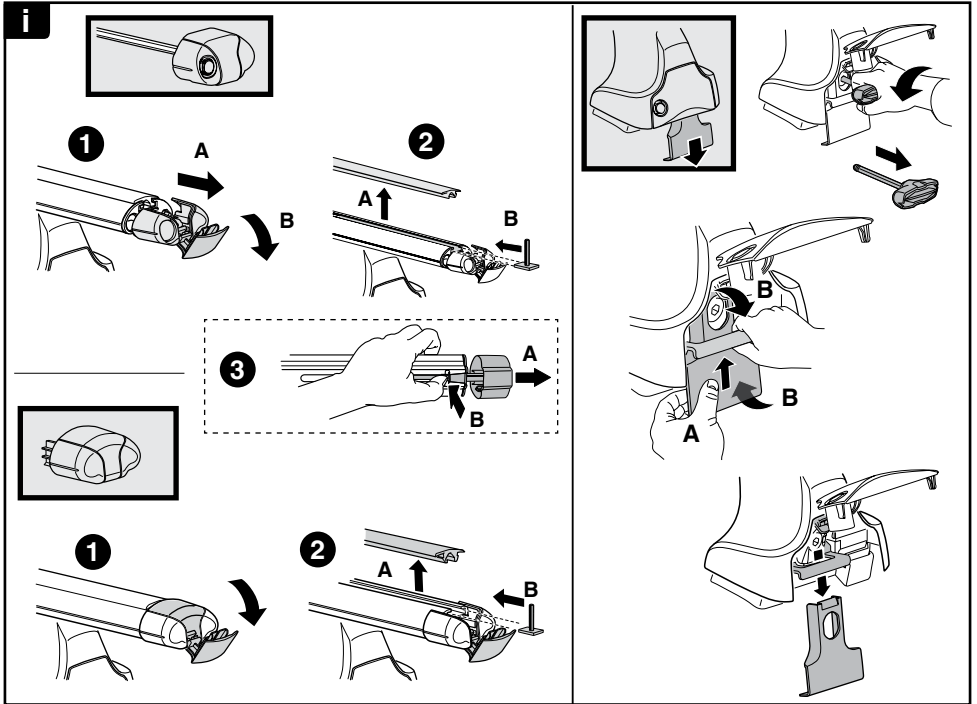
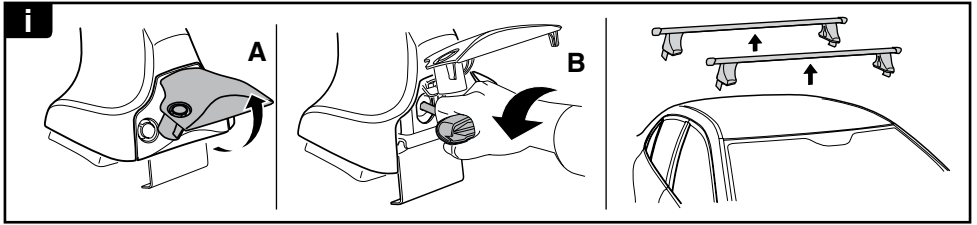


8

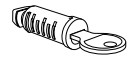
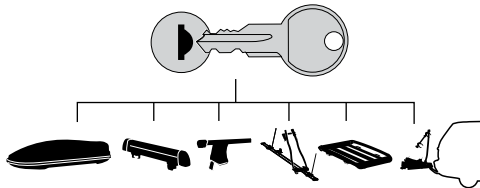


x1  
17 mm





**THULE**  
SWEDEN  
**ONE  
KEY  
SYSTEM**



- 544** (x4)
- 596** (x6)
- 588** (x8)
- NA **510** (x10)
- EUR **452** (x12)
- ASIA

