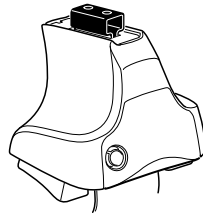


Kit 1557

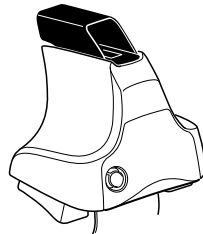
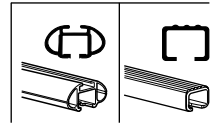
HONDA Civic, 2-dr Coupé, *06-11

HONDA Civic, 2-dr Coupé, *12-

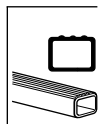
*North America



754 Rapid System
480R Rapid Traverse (North America)



480 Traverse (North America)



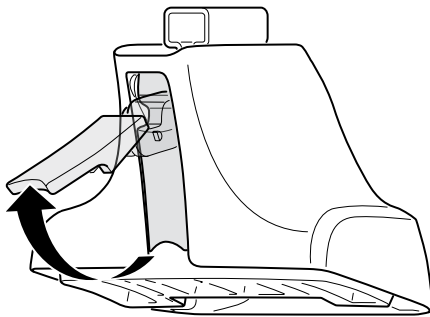
Max. 40 kg
Max. 88 lbs

754 Rapid System
480R Rapid Traverse (North America)

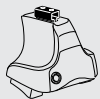
480 Traverse (North America)

(North America)

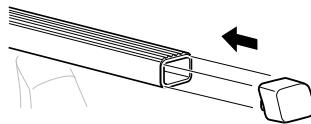
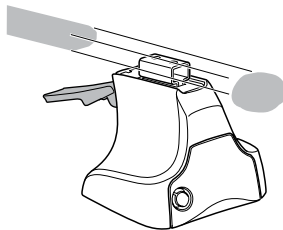
1



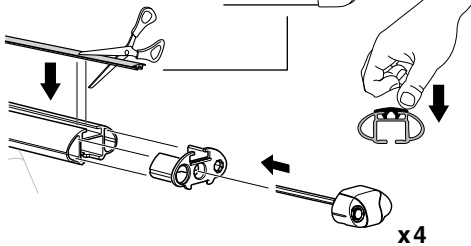
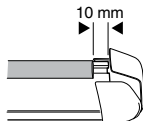
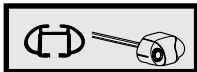
2



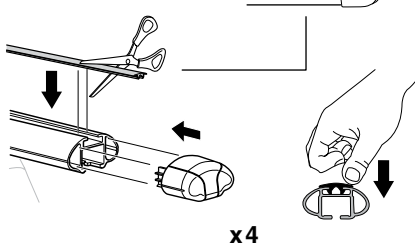
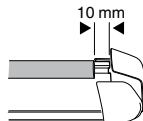
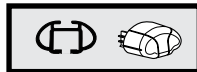
754 Rapid System
480R Rapid Traverse
(North America)



x4



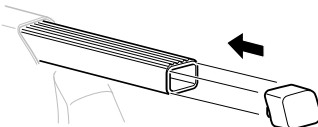
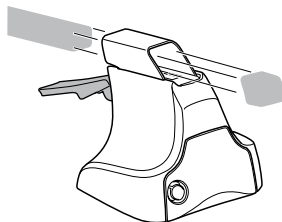
x4



x4



480 Traverse
(North America)

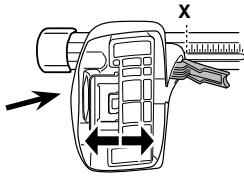


x4

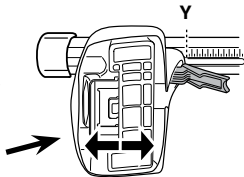
3



754 Rapid System



	X
HONDA Civic, 2-dr Coupé, *06-11	46
HONDA Civic, 2-dr Coupé, *12-	42



	Y
HONDA Civic, 2-dr Coupé, *06-11	42
HONDA Civic, 2-dr Coupé, *12-	40,5

3



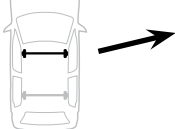
480R Rapid Traverse



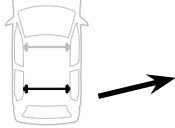
480 Traverse



(North America)

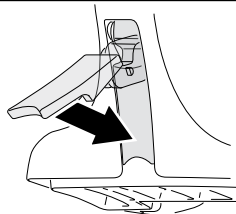


	X inch	X mm
HONDA Civic, 2-dr Coupé, *06-11	43 3/4"	1111 mm
HONDA Civic, 2-dr Coupé, *12-	42 1/4"	1071 mm



	Y inch	Y mm
HONDA Civic, 2-dr Coupé, *06-11	42 1/4"	1073 mm
HONDA Civic, 2-dr Coupé, *12-	41 1/2"	1056 mm

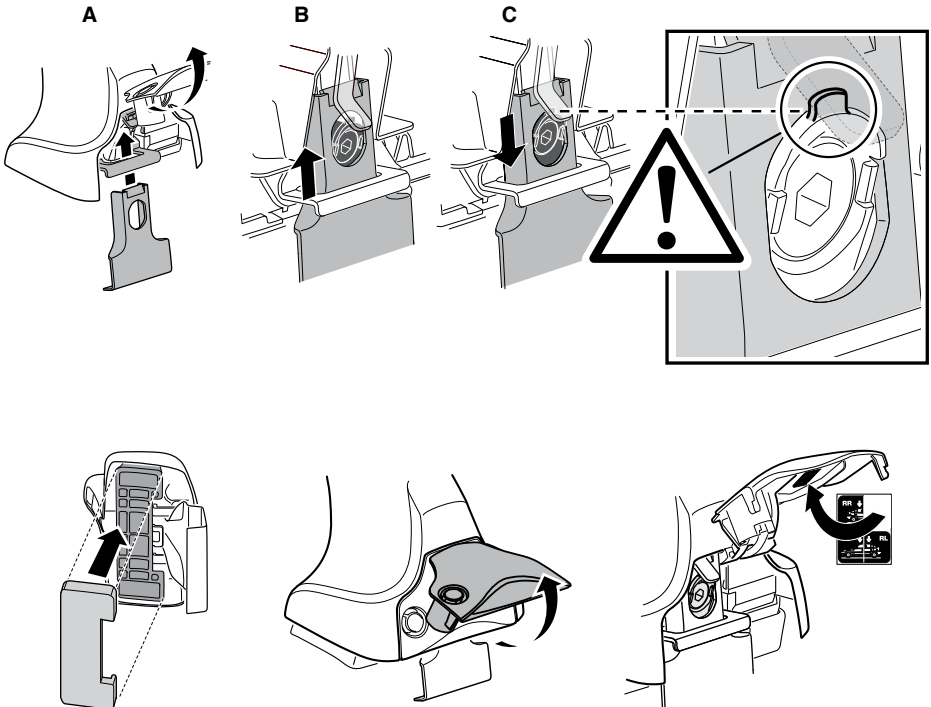
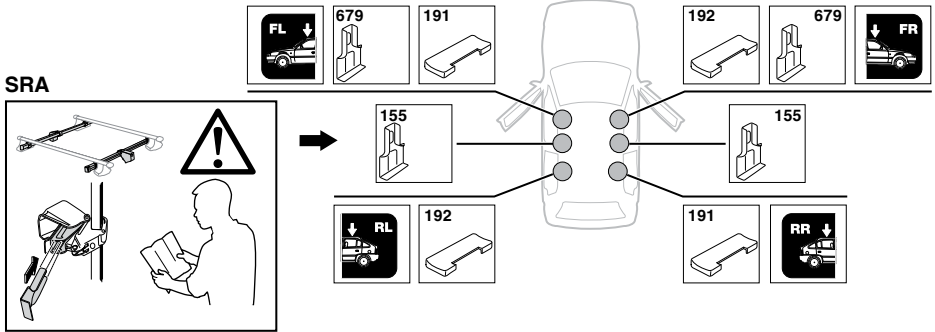
4



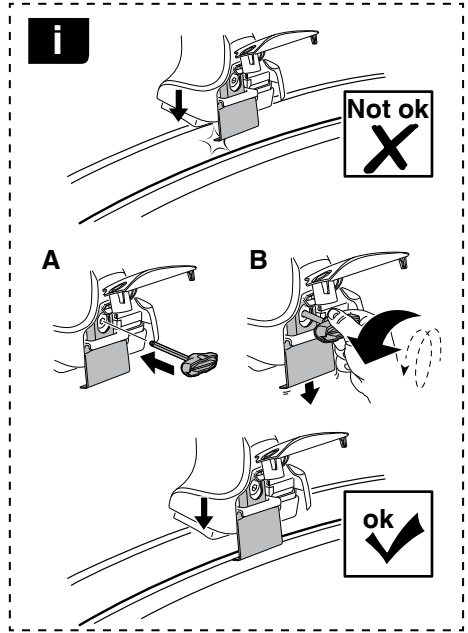
5

HONDA Civic, 2-dr Coupé, *06-11
HONDA Civic, 2-dr Coupé, *12-

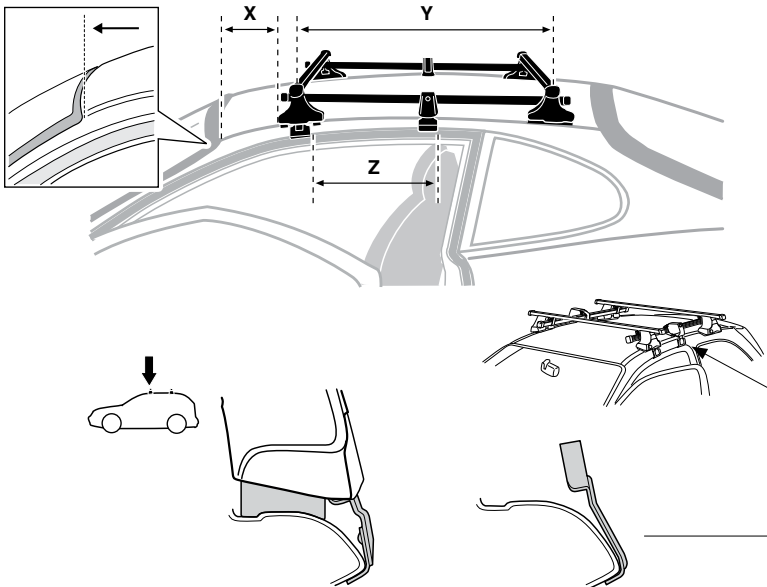
SRA

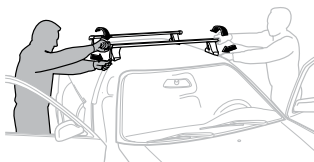


6



	X mm	Y mm	Z mm	X inch	Y inch	Z inch
HONDA Civic, 2-dr Coupé, *06-11	140 mm	700 mm	350 mm	5 1/2"	27 1/2"	13 3/4"
HONDA Civic, 2-dr Coupé, *12-	140 mm	700 mm	350 mm	5 1/2"	27 1/2"	13 3/4"



7

GB/US Tighten alternately
D Die Schrauben abwechselnd anziehen
F Serrer alternativement chaque côté
NL Afwisselend aan de linker- en de rechterkant aandraaien
I Alternare il serraggio delle viti
E Apertar alternativamente
PT Aperte alternadamente
S Dra åt växelvis
FIN Kierrä vuorotellen
EST Pinguldage vaheldumisi
LAT Pieļieciet pamišus
LIT Užsukinėkite pakaitomis
PL Śruby dokręcaj naprzemiennie
RU Затягивайте попеременно

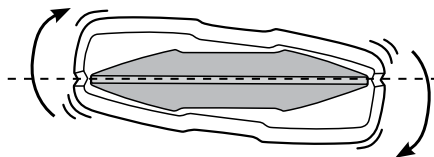
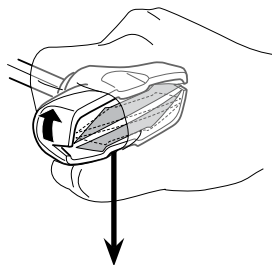
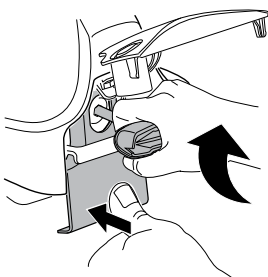
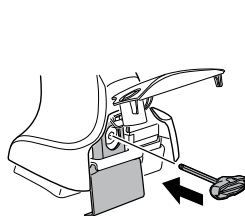
CZ Pokręťta bagażnika dokręcaj naprzemiennie.
SK Dofahajte striedavo
SLO Privijajte izmenično.
HR Naizmjenočno zategnite
HU Egymástól függetlenül szorítandó
GR Σφιγίγτες εναλλάξ
TR Dönüşümlü sıkın

中文 交替拧紧

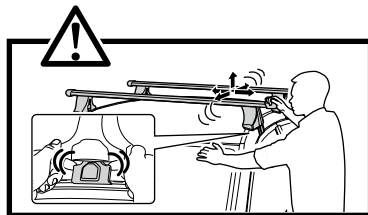
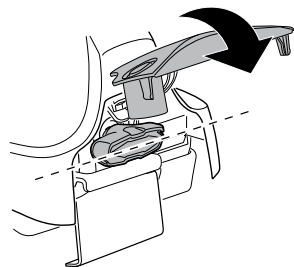
한국어 번갈아 가며 조이십시오.

日本語 交互に締め付けてください。

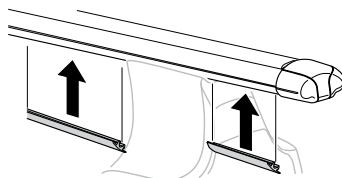
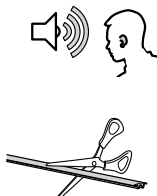
ไทย ชันในแบบสลับ

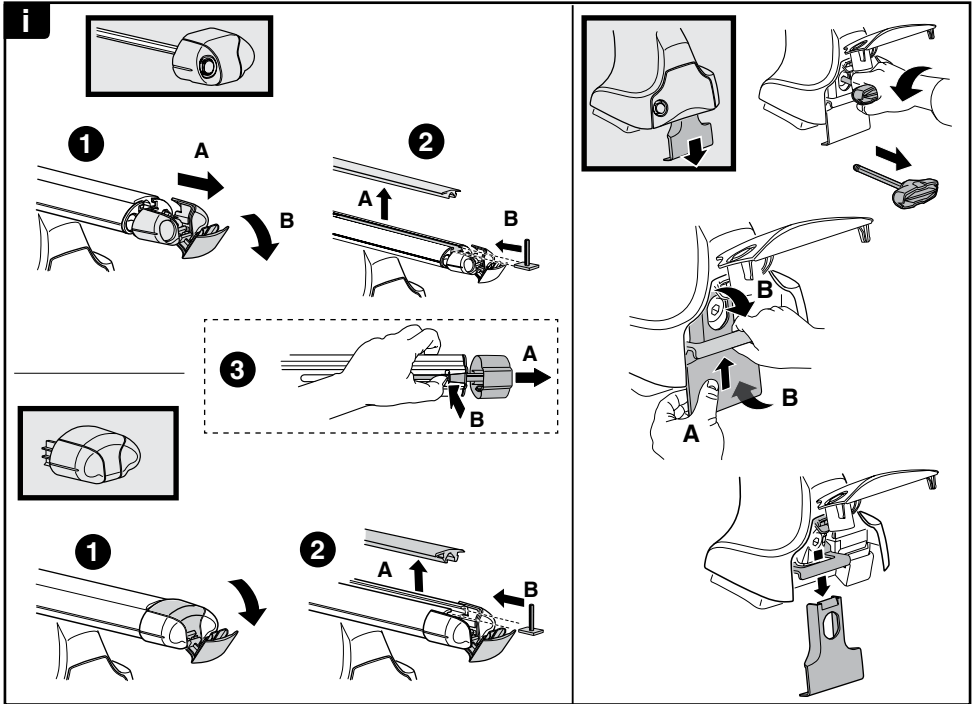
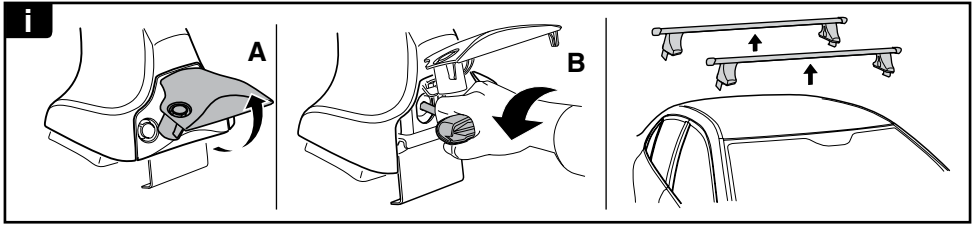


≈ 3 Nm

**8**

x1
17 mm





THULE
SWEDEN

**ONE
KEY
SYSTEM**

544 (x4)

596 (x6)

588 (x8)

NA **510** (x10)

EUR **452** (x12)

ASIA