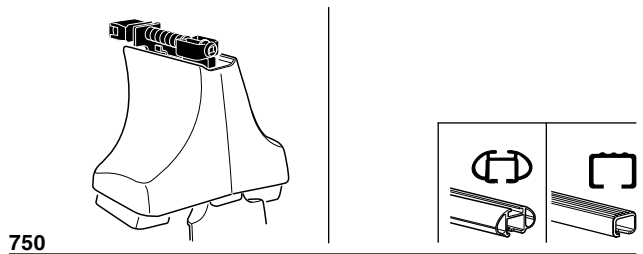
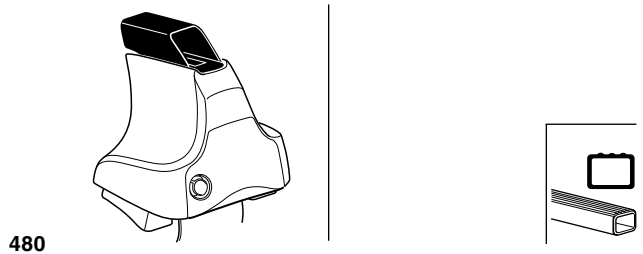
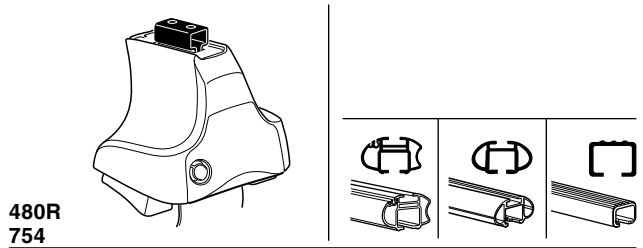
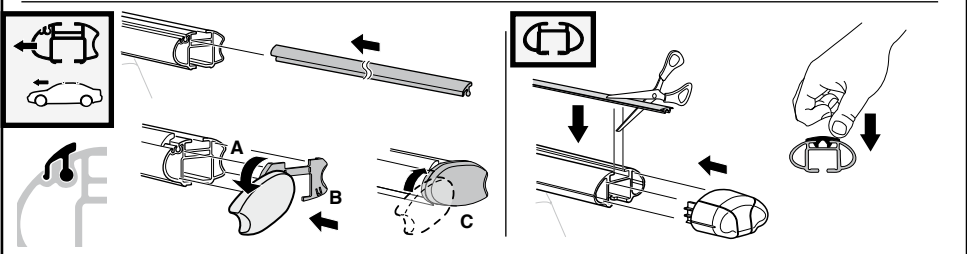
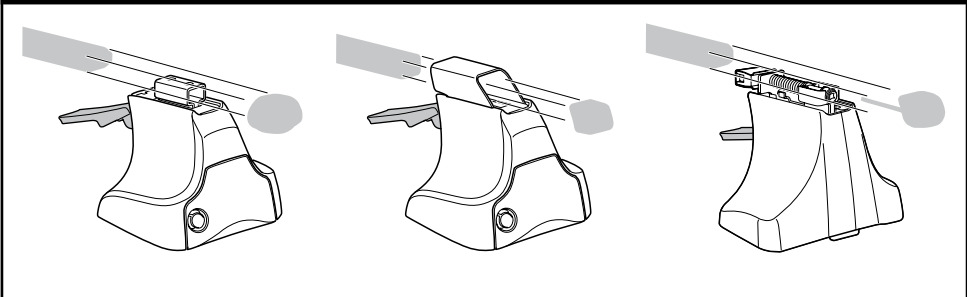
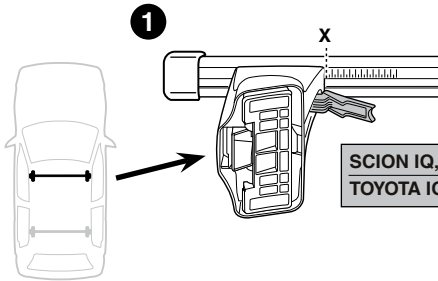


Kit 1547

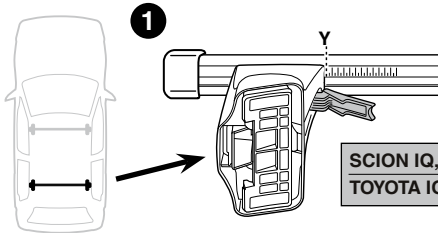
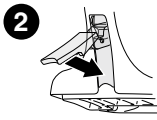
SCION IQ, 3-dr Hatchback, *10–
TOYOTA IQ, 3-dr Hatchback, 09–
*North America



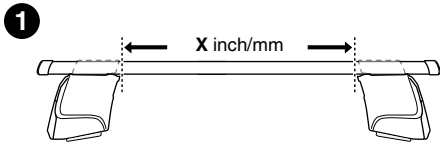
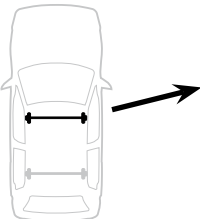
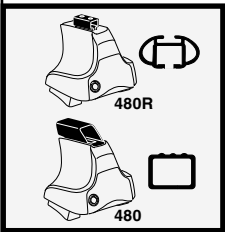




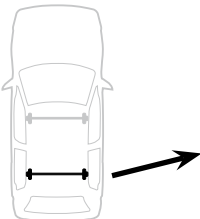
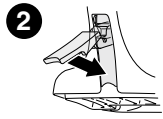
	X
SCION IQ, 3-dr Hatchback, *10-	41
TOYOTA IQ, 3-dr Hatchback, 09-	41



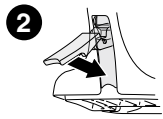
	Y
SCION IQ, 3-dr Hatchback, *10-	32,5
TOYOTA IQ, 3-dr Hatchback, 09-	32,5



	X inch	X mm
SCION IQ, 3-dr Hatchback, *10-	41 ³ / ₄ "	1061 mm
TOYOTA IQ, 3-dr Hatchback, 09-	41 ³ / ₄ "	1061 mm



	Y inch	Y mm
SCION IQ, 3-dr Hatchback, *10-	38 ³ / ₈ "	976 mm
TOYOTA IQ, 3-dr Hatchback, 09-	38 ³ / ₈ "	976 mm



4

SCION IQ, 3-dr Hatchback, *10-
TOYOTA IQ, 3-dr Hatchback, 09-

329



1049



330



1050



19



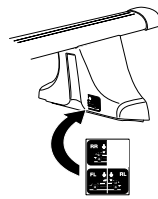
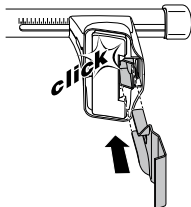
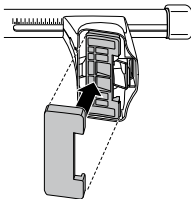
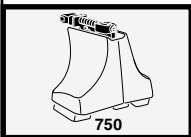
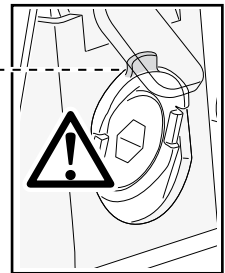
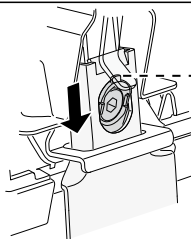
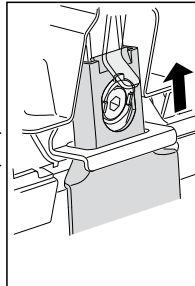
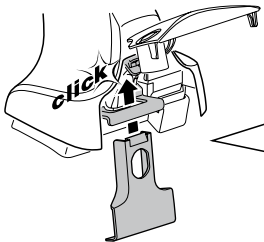
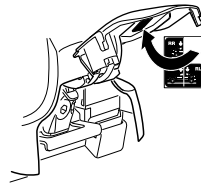
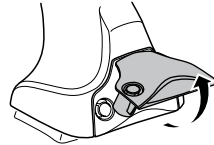
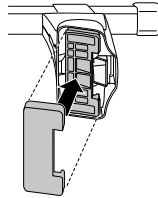
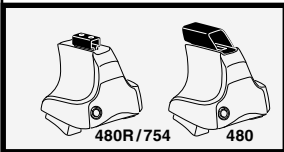
468



19



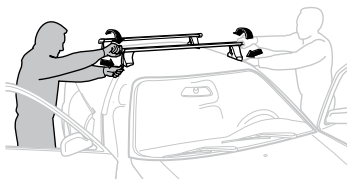
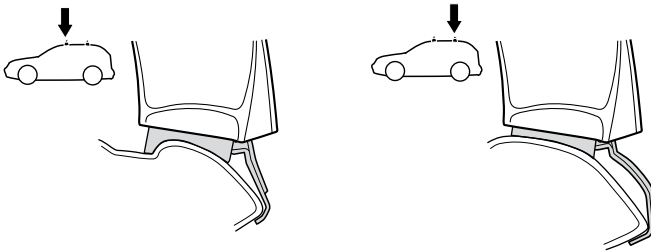
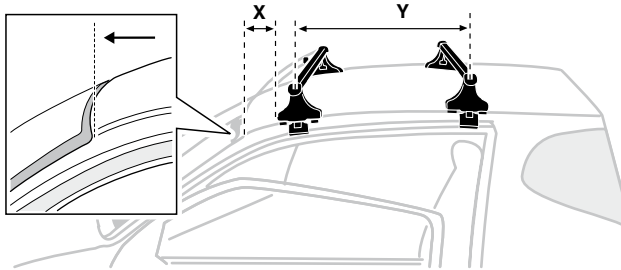
468



5



	X mm	Y mm	X inch	Y inch
SCION IQ, 3-dr Hatchback, *10-	20 mm	600 mm	3/4 "	23 5/8 "
TOYOTA IQ, 3-dr Hatchback, 09-	20 mm	600 mm	3/4 "	23 5/8 "



GB/US Tighten alternately

D Die Schrauben abwechselnd anziehen

F Serrer alternativement chaque côté

NL Afwisselend aan de linker- en de rechterkant aandraaien

I Alternare il serraggio delle viti

E Apertar alternativamente

PT Aperte alternadamente

S Dra åt växelvis

FIN Kierrä vuorotellen

EST Pinguldage vaheldumisi

LAT Pielieciet pamišus

LIT Užsukinėkite pakaitomis

PL Śruby dokręcaj naprzemiennie

RU Затягивайте попеременно

CZ Pokręťta багаžníka dokręcaj dokręcaj naprzemiennie.

SK Doťahujte striedavo

SLO Privijajte izmenično.

HR Naizmjenično zategnite

HU Egymástól függetlenül szorítandó

GR Σφιγγετε εναλλάξ

TR Dönüşümlü sıkın

中文 交替拧紧

한국어 번갈아 가며 조이십시오.

日本語 交互に締め付けてください。

ไทย ชันโนแบบสลับ

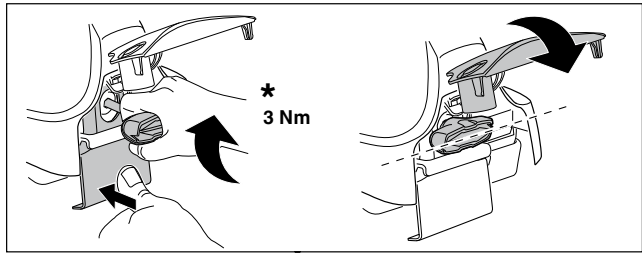
6



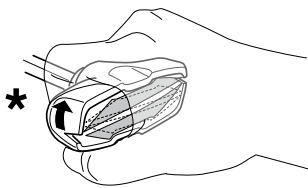
480R/754



480



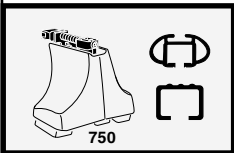
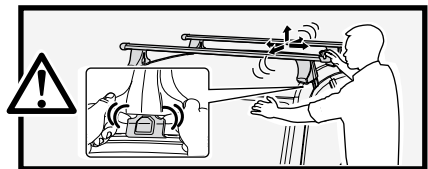
*
3 Nm



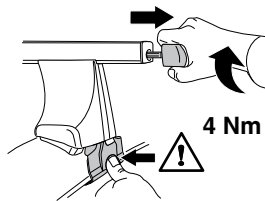
*



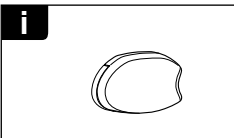
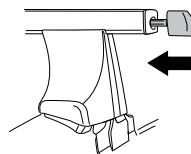
*
≈ 3 Nm



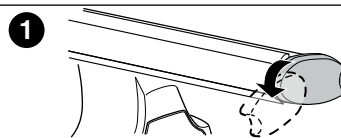
750



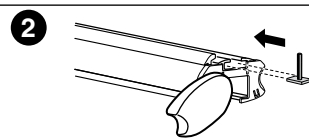
4 Nm



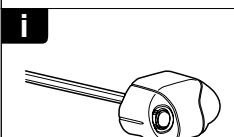
i



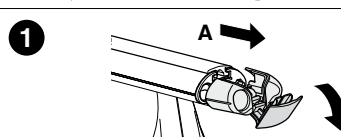
1



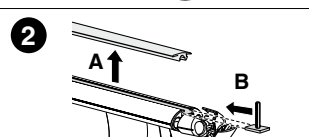
2



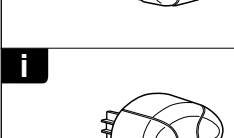
i



1



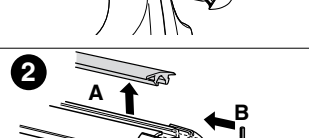
2



i



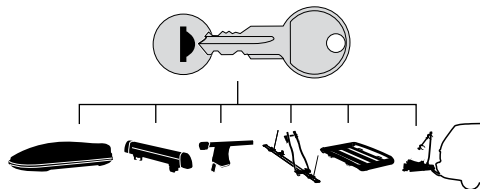
1



2



THULE
SWEDEN
**ONE
KEY
SYSTEM**



- 544 (x4)
- 596 (x6)
- 588 (x8)
- NA 510 (x10)
- EUR 452 (x12)
- ASIA

