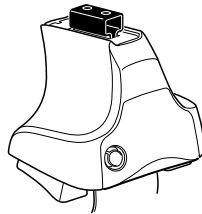


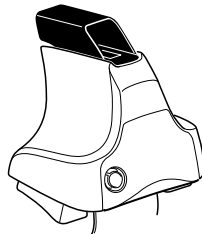
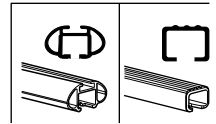
Kit 1533

FORD Taurus, 4-dr Sedan, 08-09

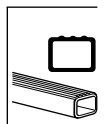
MERCURY Sable, 4-dr Sedan, 08-09



754 Rapid System
480R Rapid Traverse (North America)



480 Traverse (North America)

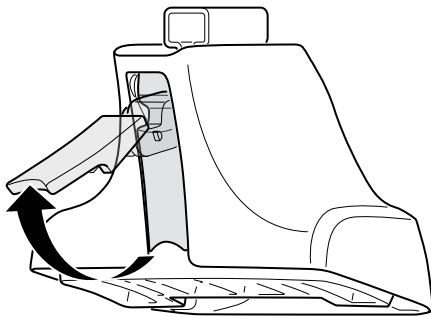


- 754 Rapid System: x1 (box), x4 (cubes), x4 (754 Rapid Traverse (North America) units), x4 (screws)
- 480R Rapid Traverse (North America): x1 (ruler), x4 (480R Rapid Traverse (North America) units), x4 (screws)
- 480 Traverse (North America): x1 (ruler), x4 (480 Traverse (North America) units), x4 (screws)

- Bar: x2
- Hardware: x2 (23 mm), x2 (23 mm), x4 (screws), x4 (nuts)
- Hardware: x1 (17 mm), x2 (23 mm), x2 (23 mm), x2 (nuts)
- Hardware: x2 (23 mm), x2 (nuts)
- Hardware: x2 (23 mm), x2 (nuts)
- Hardware: x2 (23 mm), x2 (nuts)
- Hardware: x2 (23 mm), x2 (nuts)

- Bracket: x4 (100)
- Bracket: x4 (93)
- Diagram: x1 (RR, FR, FL, RL)

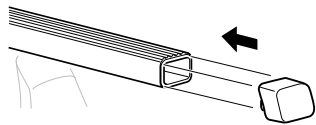
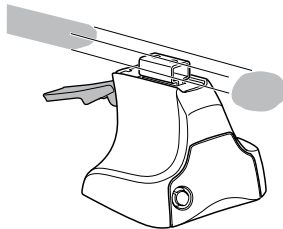
1



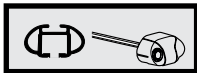
2



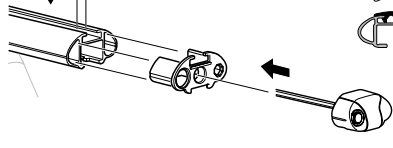
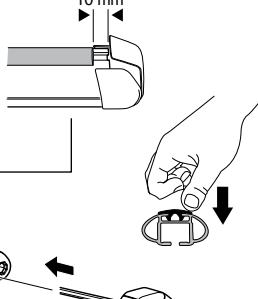
754 Rapid System
480R Rapid Traverse
(North America)



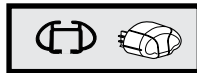
x4



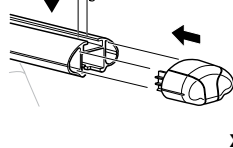
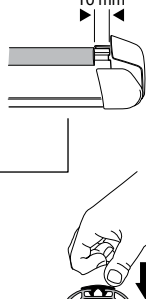
10 mm



x4



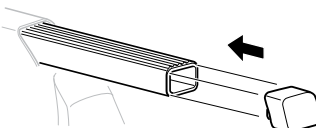
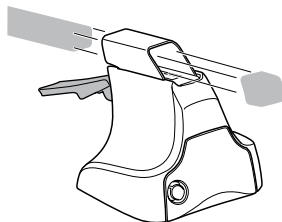
10 mm



x4

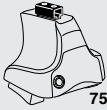


480 Traverse
(North America)

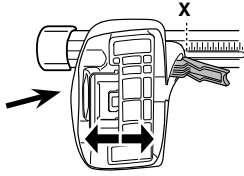


x4

3



754 Rapid System



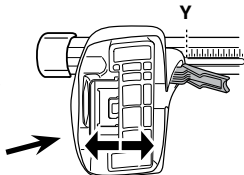
FORD Taurus, 4-dr Sedan, 08-09

X

48

MERCURY Sable, 4-dr Sedan, 08-09

48



FORD Taurus, 4-dr Sedan, 08-09

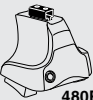
Y

44

MERCURY Sable, 4-dr Sedan, 08-09

44

3

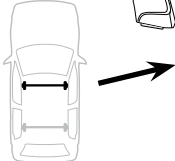


480R Rapid Traverse



480 Traverse

(North America)



X inch

X mm

FORD Taurus, 4-dr Sedan, 08-09

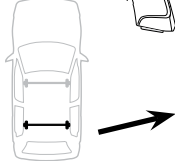
44 1/2"

1131 mm

MERCURY Sable, 4-dr Sedan, 08-09

44 1/2"

1131 mm



Y inch

Y mm

FORD Taurus, 4-dr Sedan, 08-09

43"

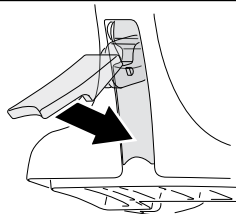
1091 mm

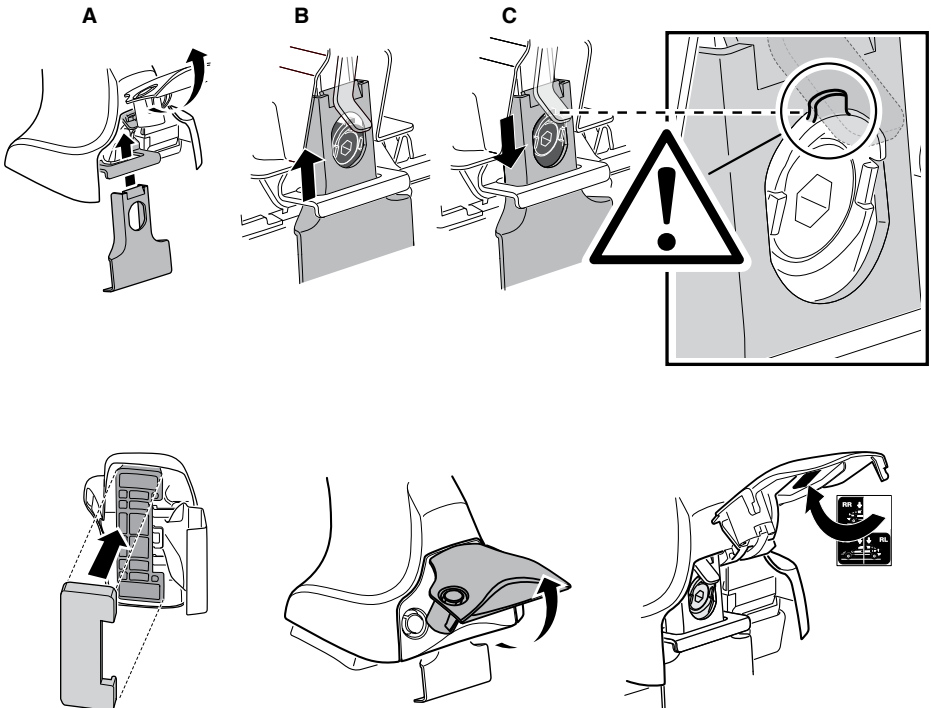
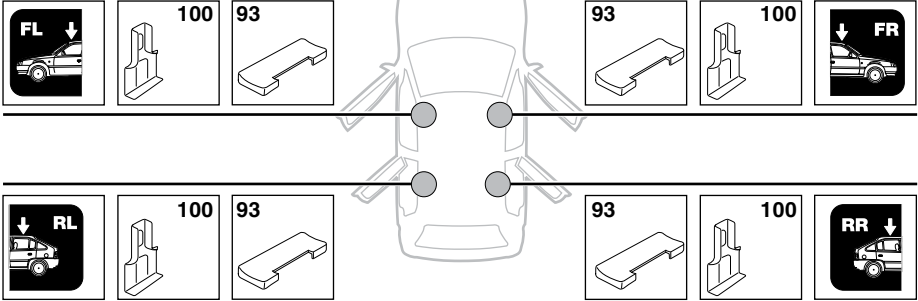
MERCURY Sable, 4-dr Sedan, 08-09

43"

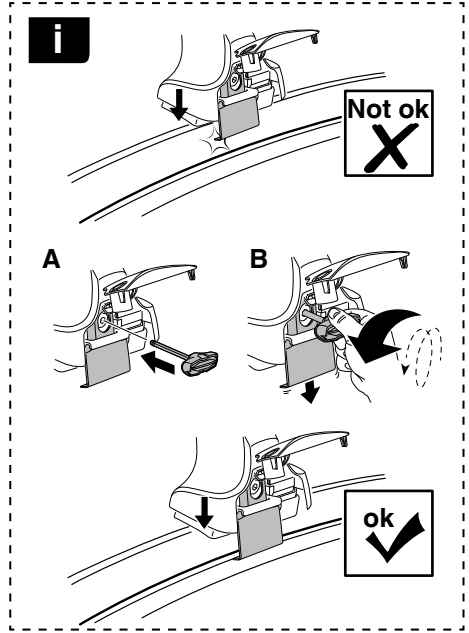
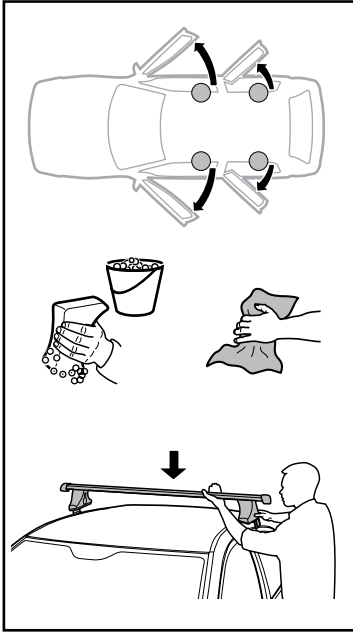
1091 mm

4

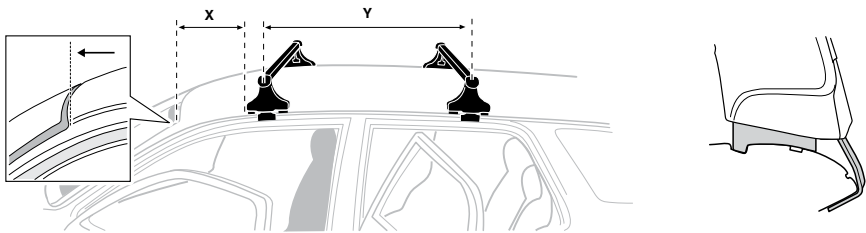


5**FORD Taurus, 4-dr Sedan, 08-09**
MERCURY Sable, 4-dr Sedan, 08-09

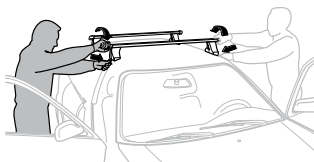
6



	X mm	Y mm	X inch	Y inch
FORD Taurus, 4-dr Sedan, 08-09	250 mm	685 mm	9 3/4"	27"
MERCURY Sable, 4-dr Sedan, 08-09	250 mm	685 mm	9 3/4"	27"



7



GB/US Tighten alternately
D Die Schrauben abwechselnd anziehen
F Serrer alternativement chaque côté
NL Afwisselend aan de linker- en de rechterkant aandraaien
I Alternare il serraggio delle viti
E Apertar alternativamente
PT Aperte alternadamente
S Dra åt växelvis
FIN Kierrä vuorotellen
EST Pinguldage vaheldumisi
LAT Pieļieciet pamišus
LIT Užsukinėkite pakaitomis
PL Śruby dokręcaj naprzemiennie
RU Затягивайте попеременно

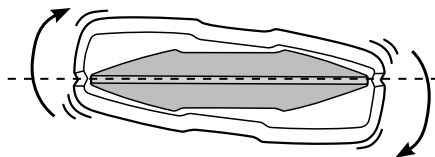
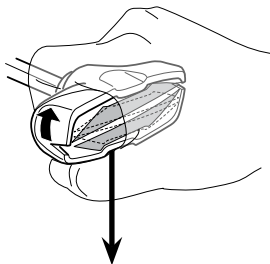
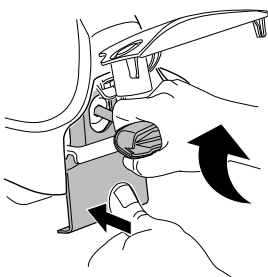
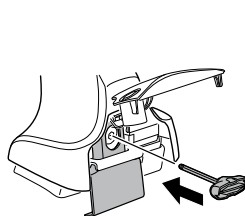
CZ Pokręťta bagażnika dokręcaj naprzemiennie.
SK Dofahajte striedavo
SLO Privijajte izmenično.
HR Naizmjenično zategnite
HU Egymástól függetlenül szorítandó
GR Σφιγίγτες εναλλάξ
TR Dönüşümlü sıkın

中文 交替拧紧

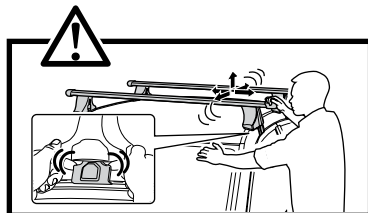
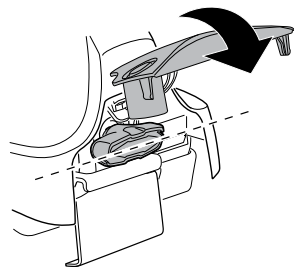
한국어 번갈아 가며 조이십시오.

日本語 交互に締め付けてください。

ไทย ชันในแบบสลับ



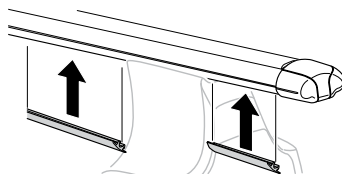
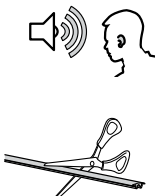
≈ 3 Nm

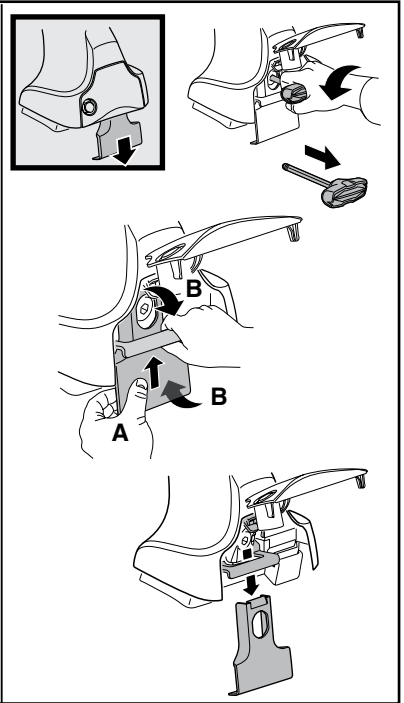
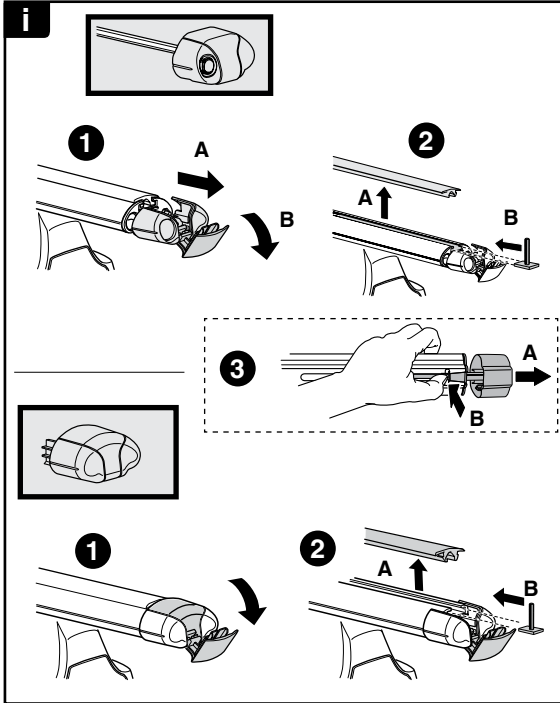
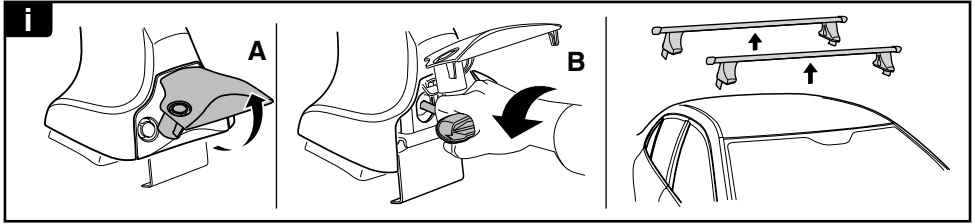


8

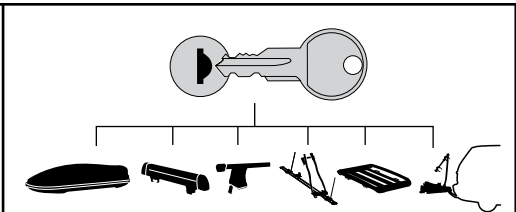


x1
17 mm

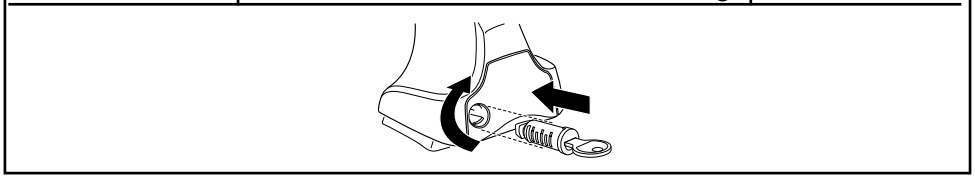




THULE
SWEDEN
**ONE
KEY
SYSTEM**



- 544 (x4)
 - 596 (x6)
 - 588 (x8)
 - 510 (x10)
 - 452 (x12)
- NA
EUR
ASIA



WW ▶ Thule Sweden AB, Box 69, 330 33 Hillerstorp, SWEDEN
NA ▶ Thule Inc., 42 Silvermine Road, Seymour, Connecticut 06483, USA

info@thule.com
customer.service@thule.com

www.thule.com