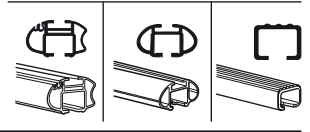
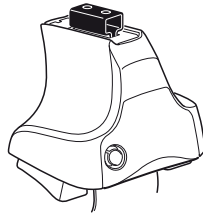


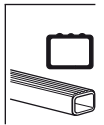
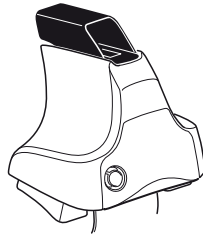
# Kit 1516

HONDA Civic, 2-dr Coupé, 01-05 (NA)

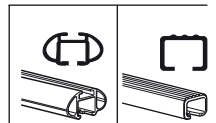
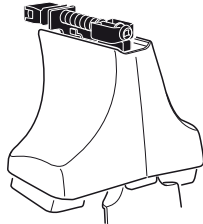
480R  
754



480



750



**Max. 40 kg**  
**Max. 88 lbs**

x1

x4

x4

x4

x4

**480R/754**

---

x1

x4

x4

x4

**480**

---

x1

x4

x4

**750**

x2 x2 x2 x4	x2	x2 x2 x4 x4	x2 x2	x2

52 x 2

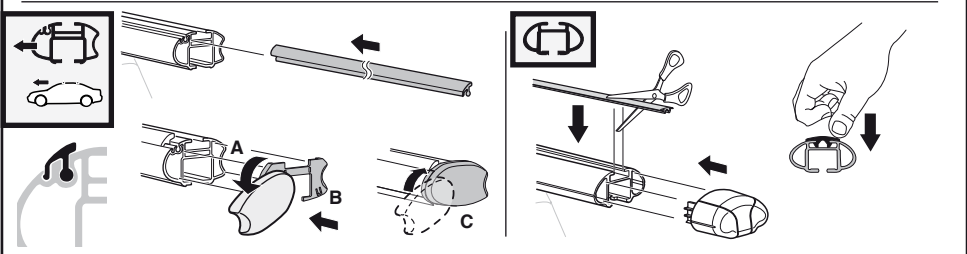
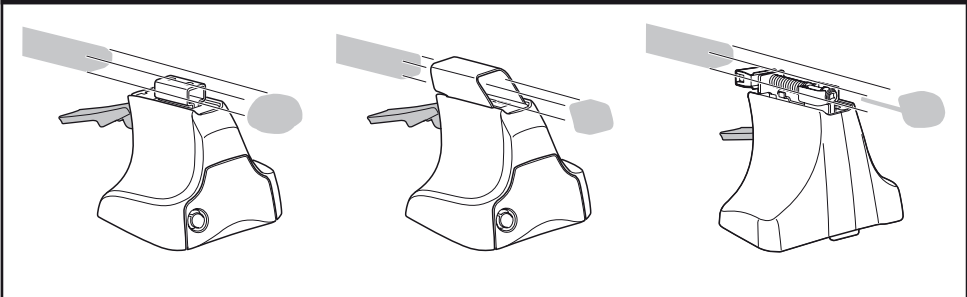
349 x 2

15 x 2

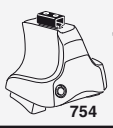
111 x 2

x1

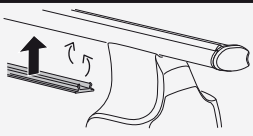
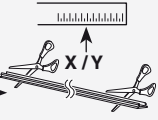
**Kit**



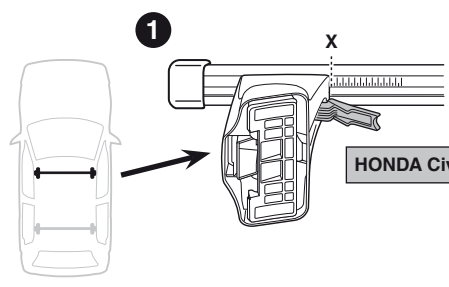
**3**



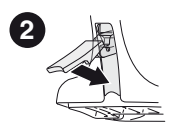
754



750

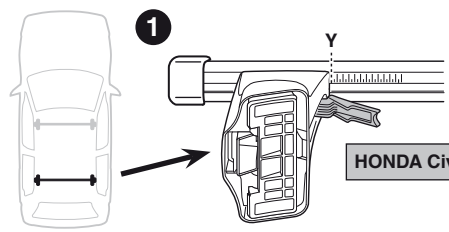


HONDA Civic, 2-dr Coupé, 01-05 (NA)

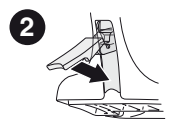


X

31



HONDA Civic, 2-dr Coupé, 01-05 (NA)

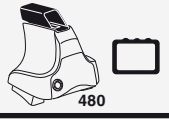


Y

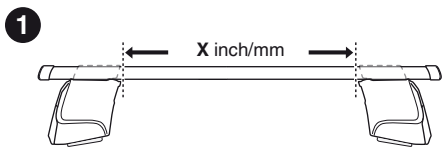
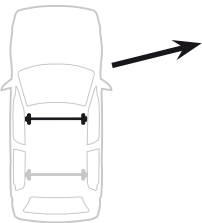
30



480R



480



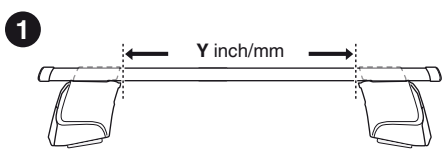
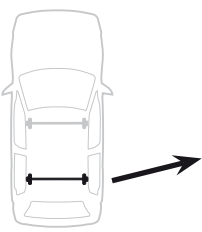
HONDA Civic, 2-dr Coupé, 01-05 (NA)

X inch

X mm

37 3/4"

961 mm



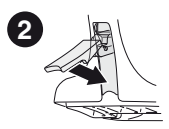
HONDA Civic, 2-dr Coupé, 01-05 (NA)

Y inch

Y mm

37 1/2"

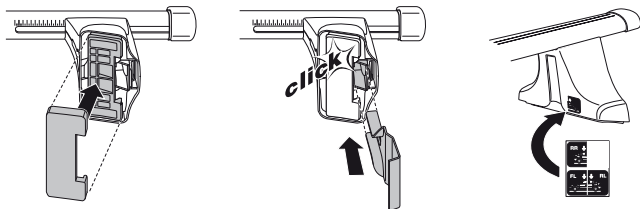
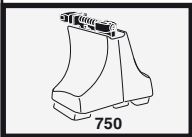
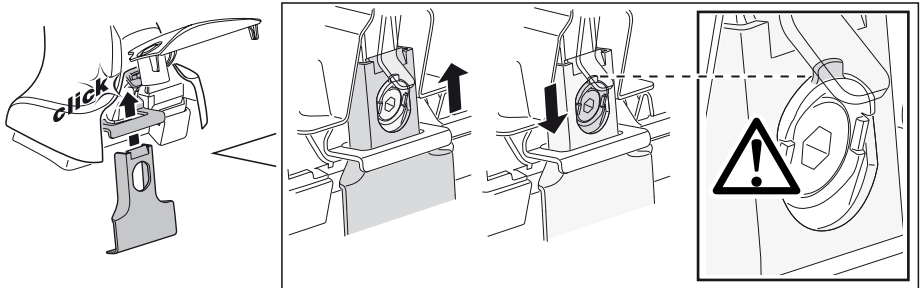
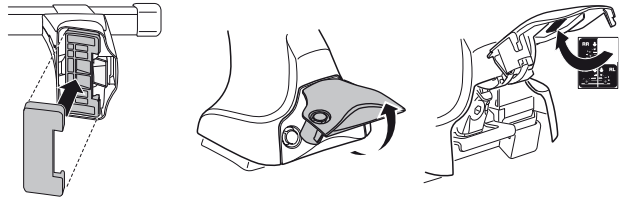
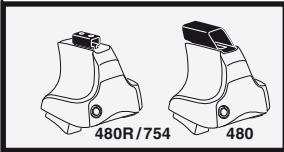
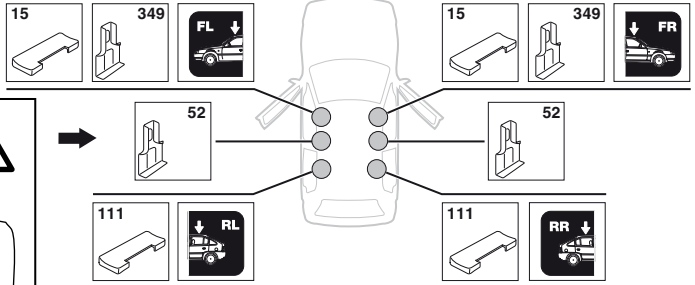
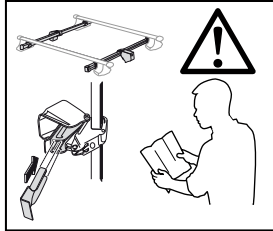
951 mm



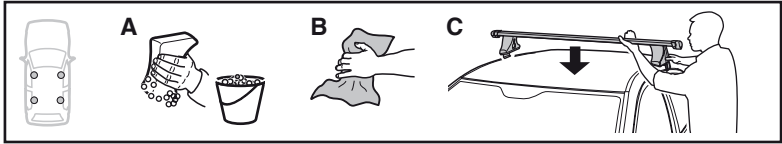
# 4

HONDA Civic, 2-dr Coupé, 01-05 (NA)

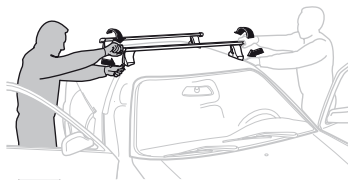
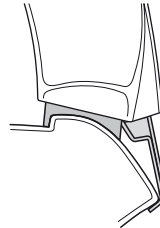
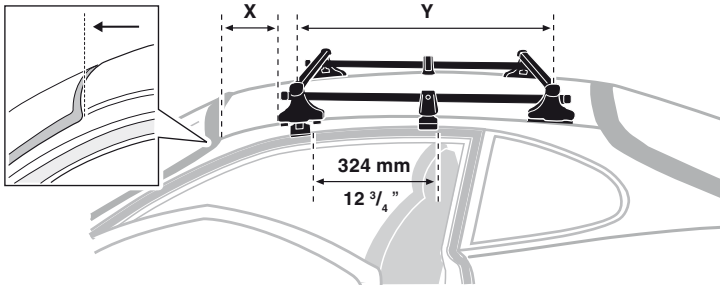
## SRA



**5**



	X mm	Y mm	X inch	Y inch
<b>HONDA Civic, 2-dr Coupé, 01-05 (NA)</b>	<b>230 mm</b>	<b>635 mm</b>	<b>9"</b>	<b>25"</b>



**GB/US** Tighten alternately

**D** Die Schrauben abwechselnd anziehen

**F** Serrer alternativement chaque côté

**NL** Afwisselend aan de linker- en de rechterkant aandraaien

**I** Alternare il serraggio delle viti

**E** Apretar alternativamente

**PT** Aperte alternadamente

**S** Dra åt växelvis

**FIN** Kierrä vuorotellen

**EST** Pinguldage vaheldumisi

**LAT** Pielieciet pamišus

**LIT** Užsukinėkite pakaitomis

**PL** Śruby dokręcaj naprzemiennie

**RU** Затягивайте попеременно

**CZ** Pokręťta bagażníka dokręcaj dokręcaj naprzemiennie.

**SK** Doťahujte striedavo

**SLO** Privijajte izmenično.

**HR** Naizmjenično zategnite

**HU** Egymástól függetlenül szorítandó

**GR** Σφίγγετε εναλλάξ

**TR** Dönüşümlü sıkın

**中文** 交替拧紧

**한국어** 번갈아 가며 조이십시오.

**日本語** 交互に締め付けてください。

**ไทย** ชั้้นในแบบสลับ

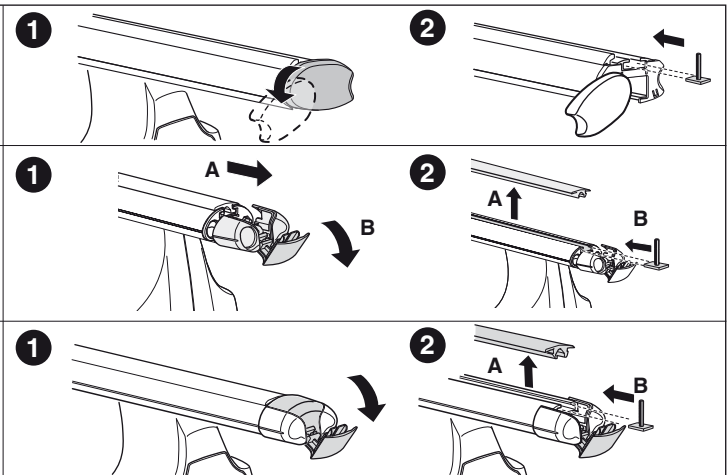
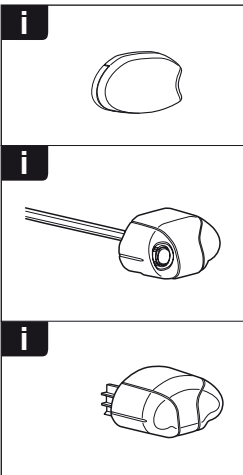
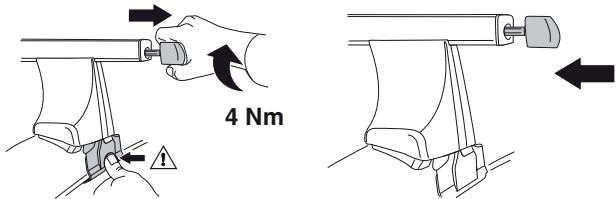
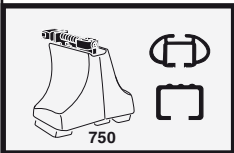
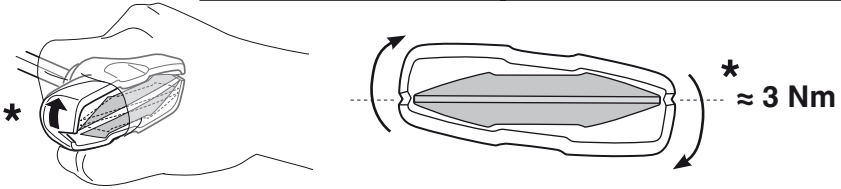
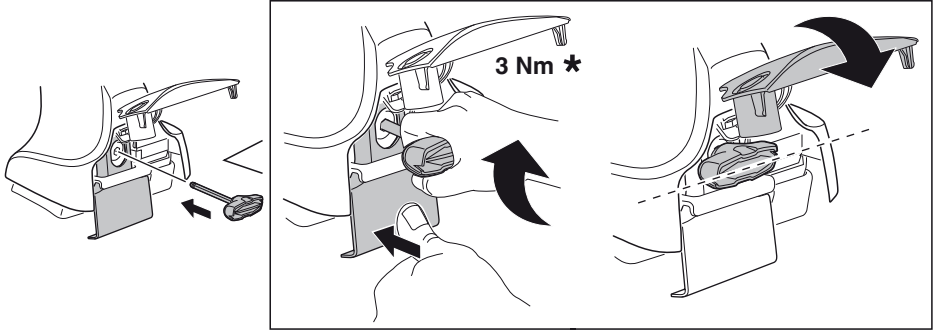
6

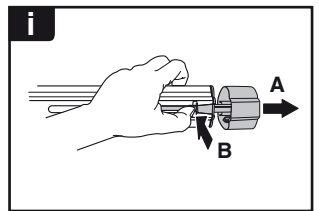
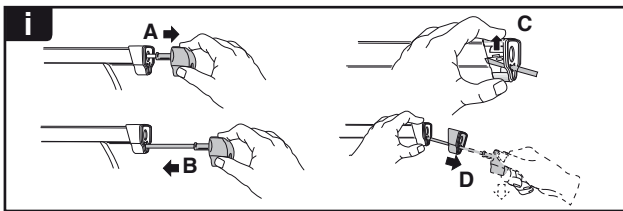
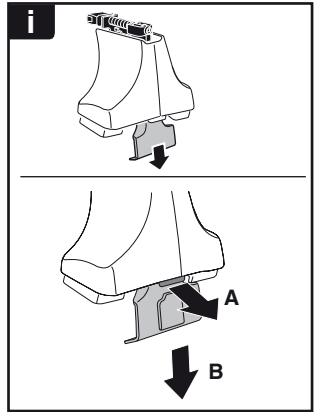
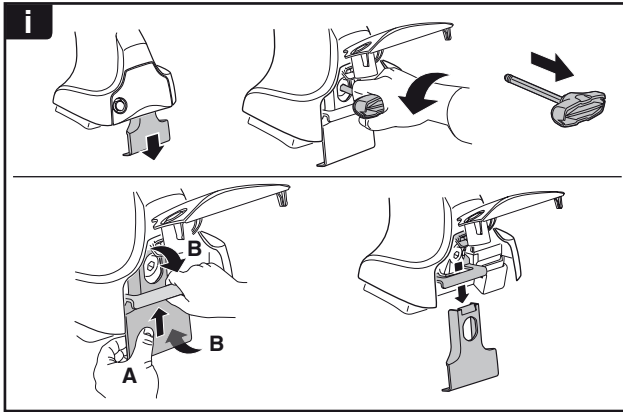
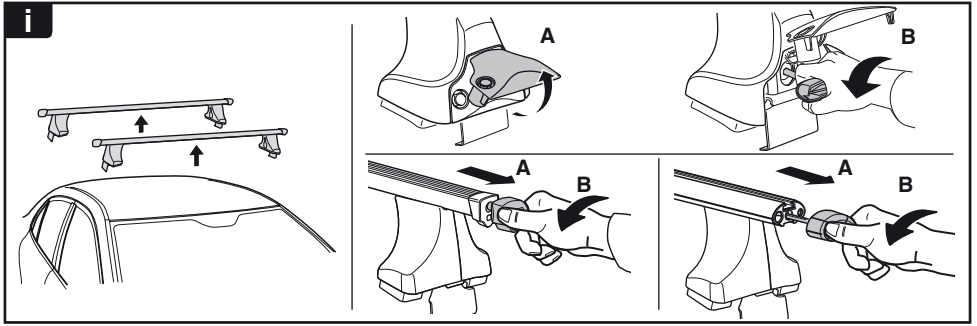


480R/754

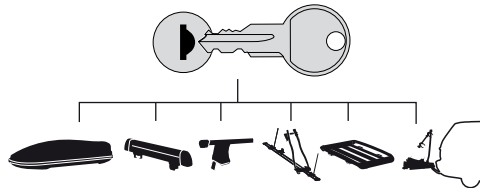


480

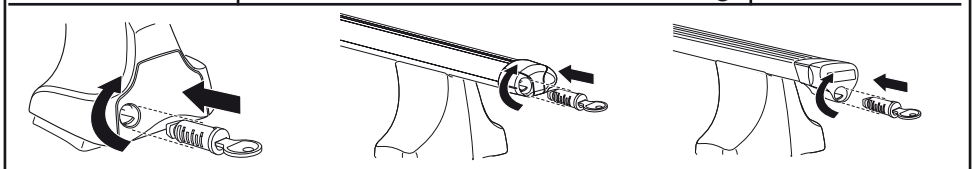




**THULE**  
SWEDEN  
**ONE  
KEY  
SYSTEM**



- 544 (x4)
- 596 (x6)
- 588 (x8)
- NA 510 (x10)
- EUR 452 (x12)
- ASIA



WW ▶ Thule Sweden AB, Box 69, 330 33 Hillerstorp, SWEDEN  
NA ▶ Thule Inc., 42 Silvermine Road, Seymour, Connecticut 06483, USA

info@thule.com  
customer.service@thule.com

www.thule.com