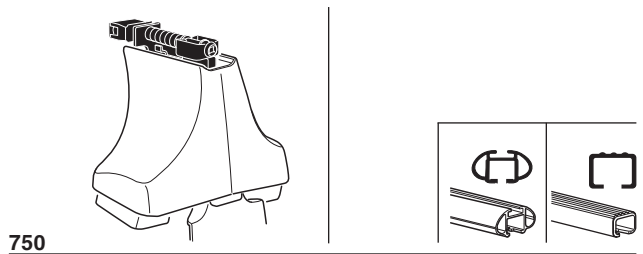
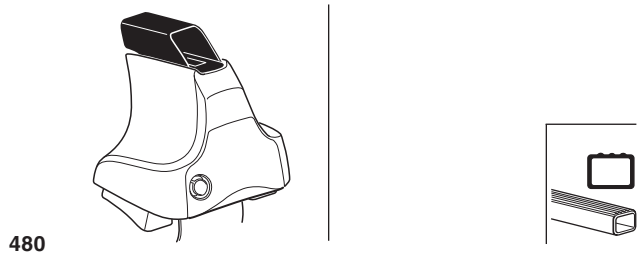
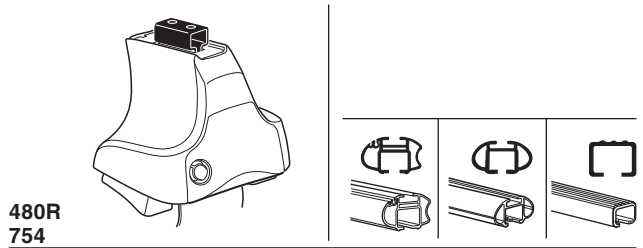


# Kit 1506

FORD Falcon FG, 4-dr Sedan, 08-14



xx kg  
 xx lbs

7 kg  
 15,4 lbs

**Max. 50kg**  
**Max. 110 lbs**

80 km/h  
 50 Mph  
 130 km/h  
 80 Mph  
 40 km/h  
 25 Mph  
**km/h**  
**Mph**

**THULE**

**Kit XXXX**  
 instructions

x1

x4

x4

x4

**480R/754**

x1

x4

x4

x4

**480**

x1

x4

x4

x4

**750**

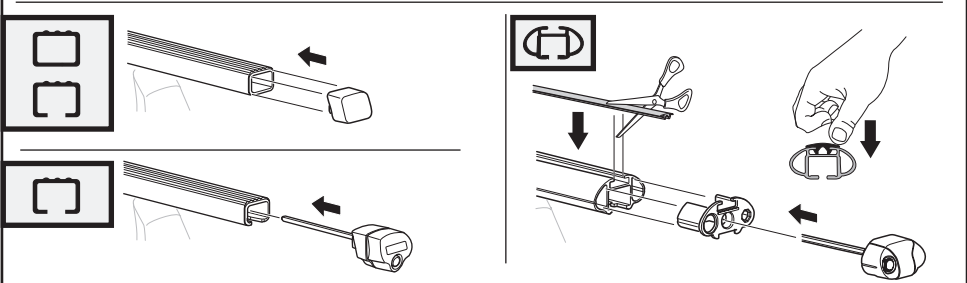
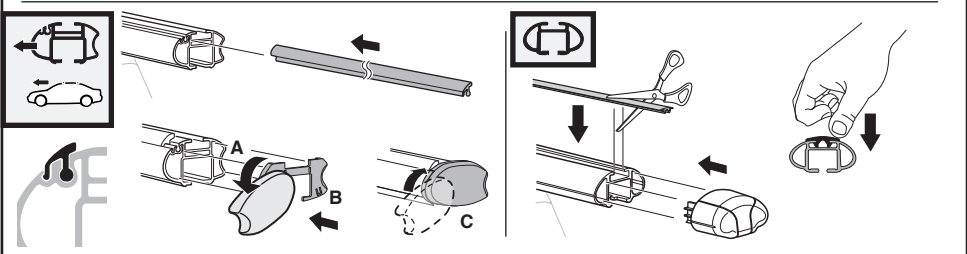
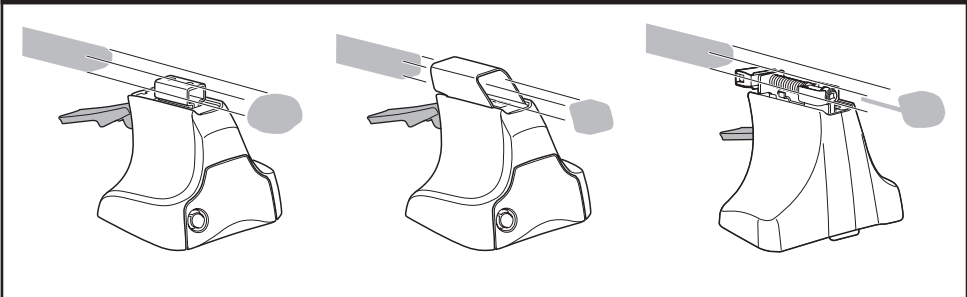
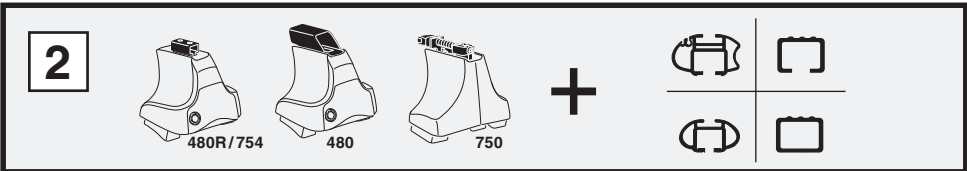
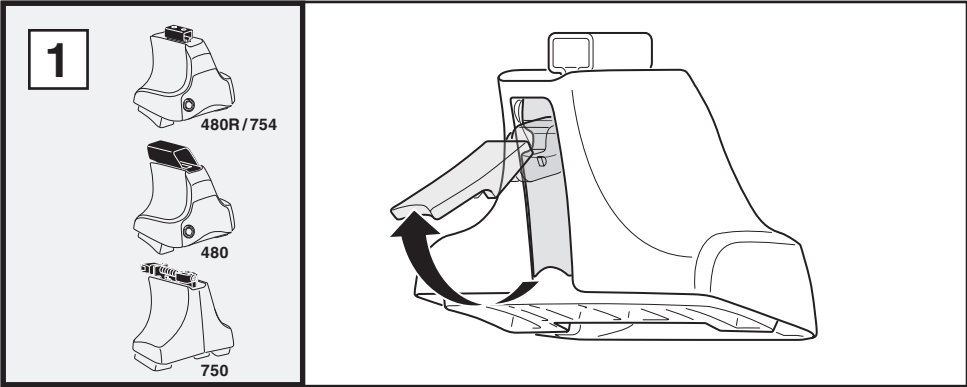
x2 x2 x2 x4	x2	x2 x2 x4 x4	x2 x2	x2

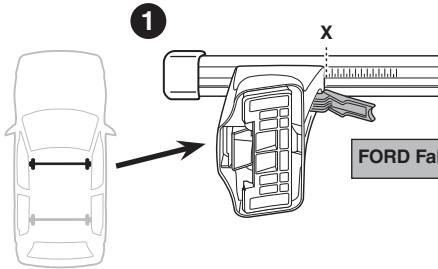
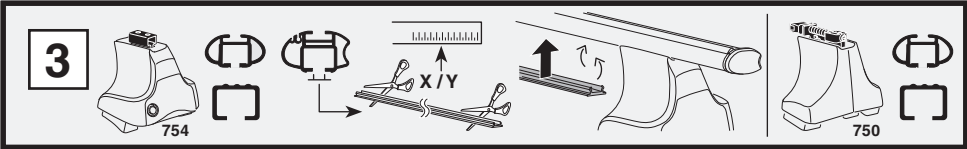
**230** x 4

**06** x 4

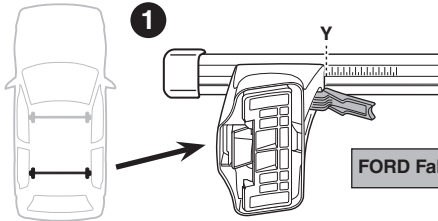
x 1

**Kit**

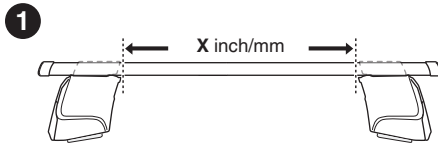
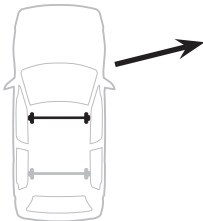
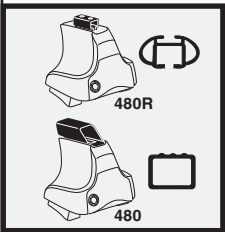




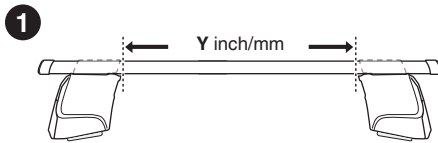
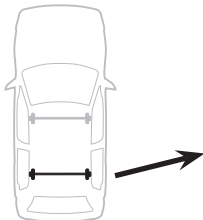
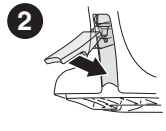
<b>1</b>	<b>x</b>
<b>FORD Falcon FG, 4-dr Sedan, 08-14</b>	
	<b>46</b>



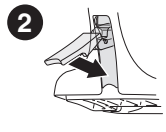
<b>1</b>	<b>y</b>
<b>FORD Falcon FG, 4-dr Sedan, 08-14</b>	
	<b>44</b>



<b>1</b>	<b>X inch/mm</b>
<b>FORD Falcon FG, 4-dr Sedan, 08-14</b>	
<b>X inch</b>	<b>X mm</b>
<b>43 3/4"</b>	<b>1111 mm</b>

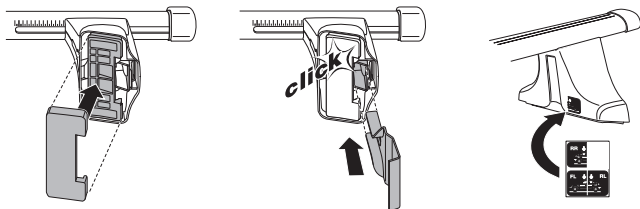
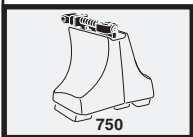
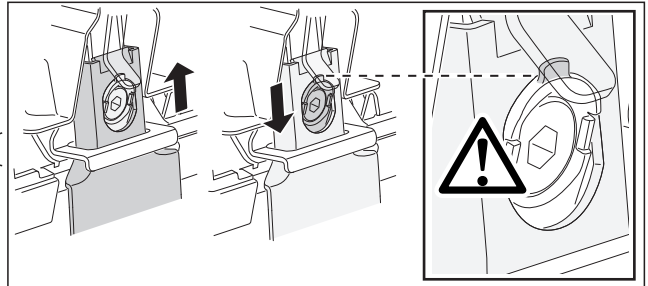
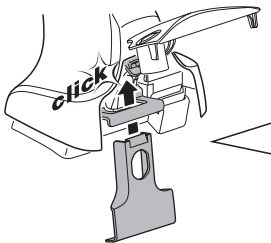
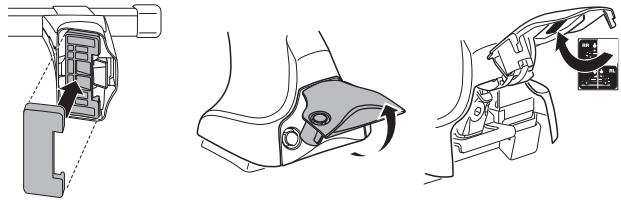
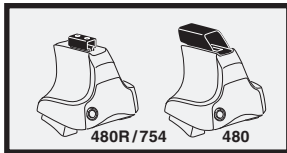
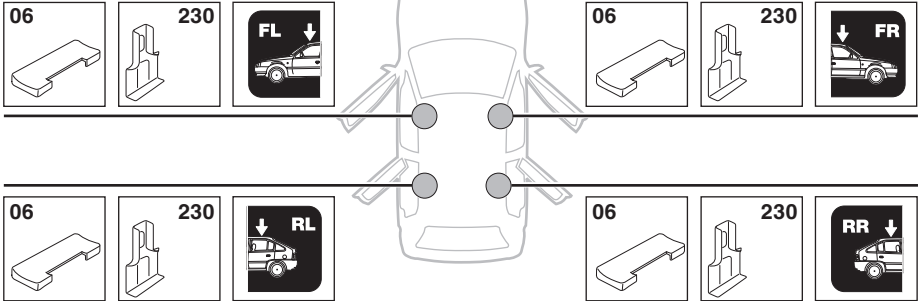


<b>1</b>	<b>Y inch/mm</b>
<b>FORD Falcon FG, 4-dr Sedan, 08-14</b>	
<b>Y inch</b>	<b>Y mm</b>
<b>43"</b>	<b>1091 mm</b>

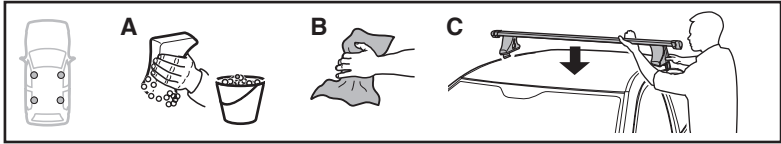


4

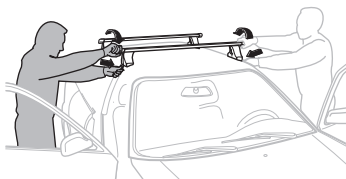
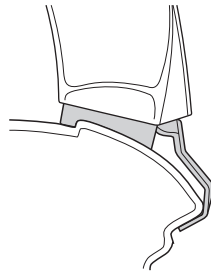
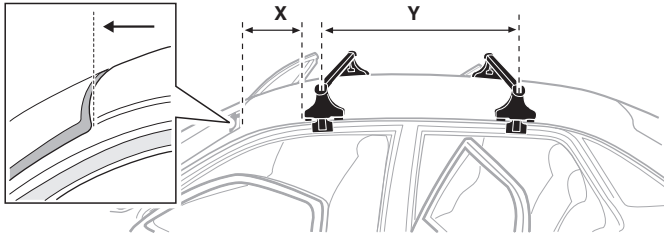
FORD Falcon FG, 4-dr Sedan, 08–14



5



	X mm	Y mm	X inch	Y inch
FORD Falcon FG, 4-dr Sedan, 08-14	280 mm	740 mm	11 "	29 1/8 "



**GB/US** Tighten alternately

**D** Die Schrauben abwechselnd anziehen

**F** Serrer alternativement chaque côté

**NL** Afwisselend aan de linker- en de rechterkant aandraaien

**I** Alternare il serraggio delle viti

**E** Apretar alternativamente

**PT** Aperte alternadamente

**S** Dra åt växelvis

**FIN** Kierrä vuorotellen

**EST** Pinguldage vaheldumisi

**LAT** Pielieciet pamišus

**LIT** Užsukinėkite pakaitomis

**PL** Śruby dokręcaj naprzemiennie

**RU** Затягивайте попеременно

**CZ** Pokręťta bagażníka dokręcaj dokręcaj naprzemiennie.

**SK** Doťahujte striedavo

**SLO** Privijajte izmenično.

**HR** Naizmjenično zategnite

**HU** Egymástól függetlenül szorítandó

**GR** Σφίγγετε εναλλάξ

**TR** Dönüşümlü sıkın

**中文** 交替拧紧

**한국어** 번갈아 가며 조이십시오.

**日本語** 交互に締め付けてください。

**ไทย** ชันโนแบบสลับ

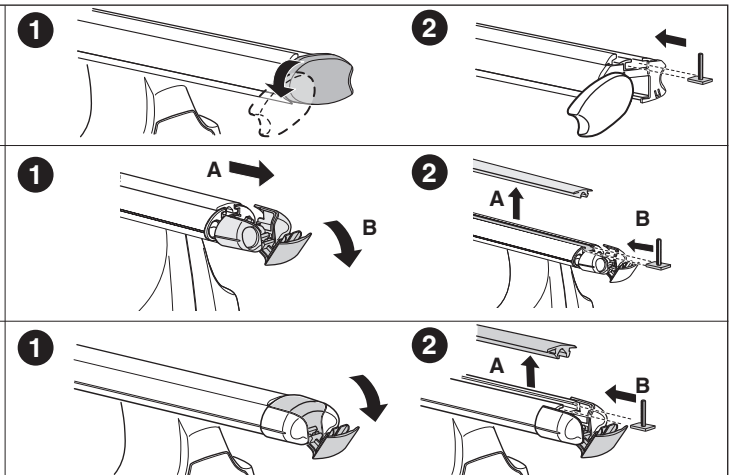
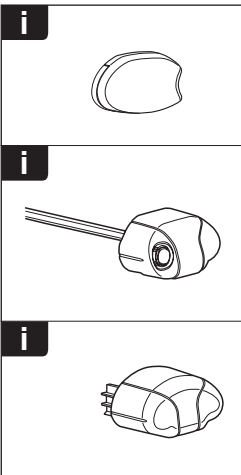
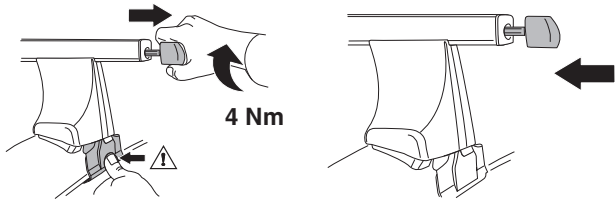
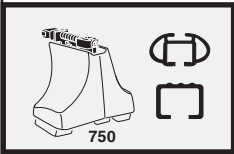
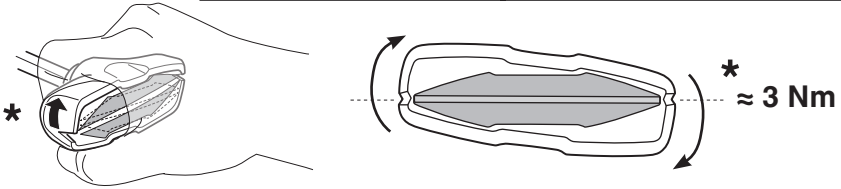
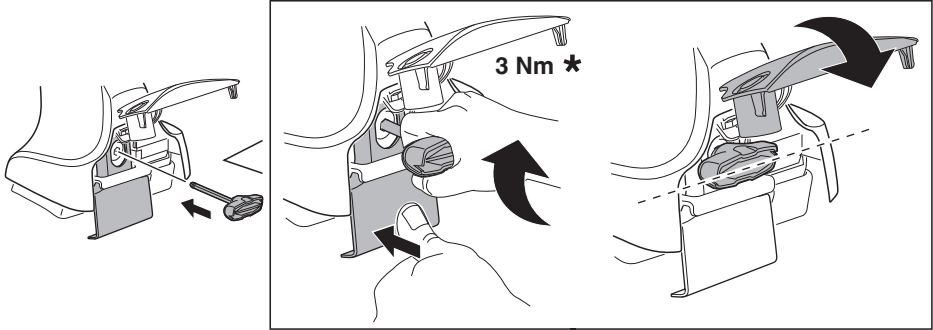
6

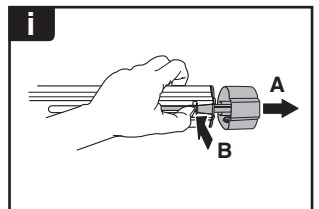
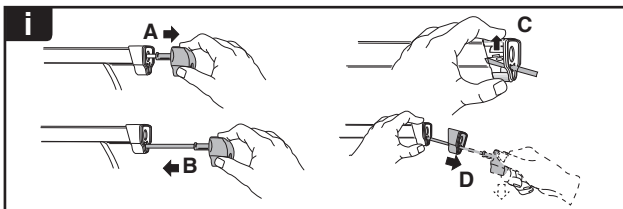
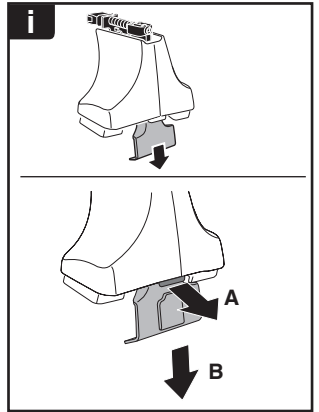
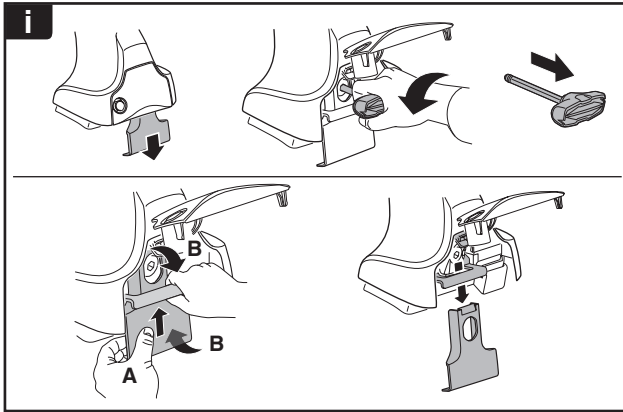
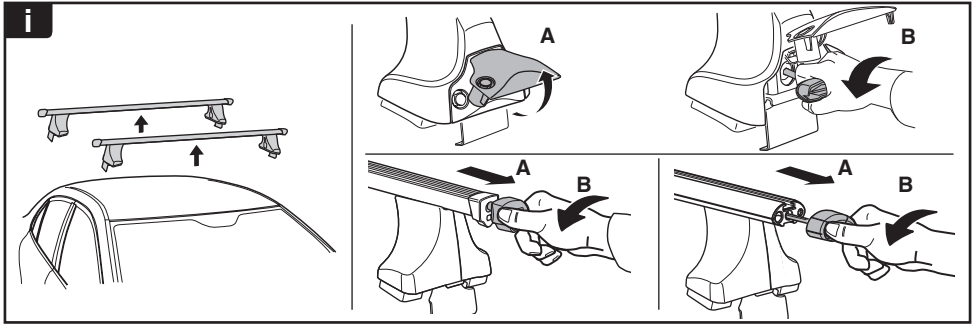


480R/754

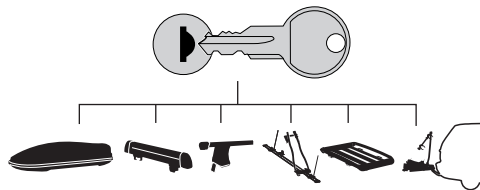







480

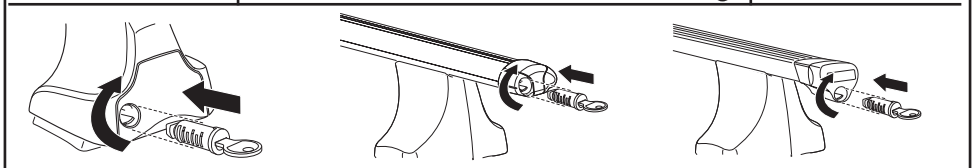




**THULE**  
SWEDEN  
**ONE  
KEY  
SYSTEM**



-  **544** (x4)
  -  **596** (x6)
  -  **588** (x8)
  -  **510** (x10)
  -  **452** (x12)
- NA  
EUR  
ASIA



WW ▶ Thule Sweden AB, Box 69, 330 33 Hillerstorp, SWEDEN  
NA ▶ Thule Inc., 42 Silvermine Road, Seymour, Connecticut 06483, USA

info@thule.com  
customer.service@thule.com

 www.thule.com