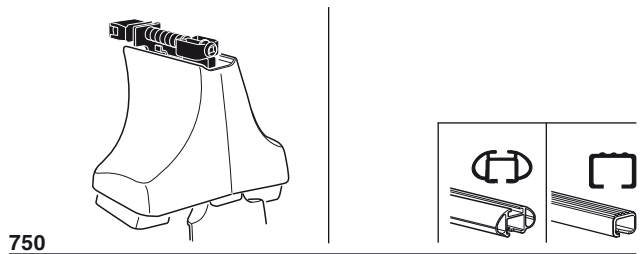
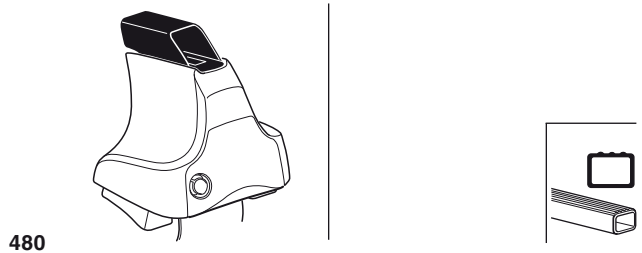
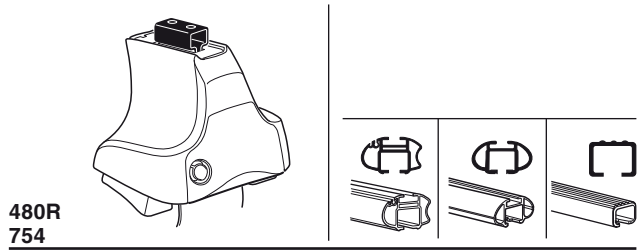


Kit 1497

VOLKSWAGEN Gol, 5-dr Hatchback, 08-



Max. 75kg
Max. 165 lbs

Kit XXXX
 instructions

x1

x4

x4

x4
 x4

480R/754

x1

x4

x4

x4
 x4

480

x1

x4

x4

x4
 x4

750

x2 x2 x2 x4	x2	x2 x2 x4 x4	x2 x2 x2	x2
----------------------	----	----------------------	----------------	----

235 x2

349 x2

245 x4

x1

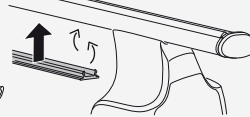
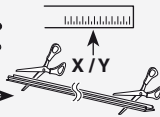
Kit



3



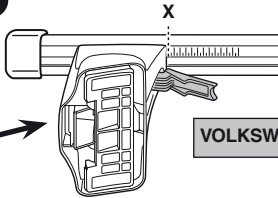
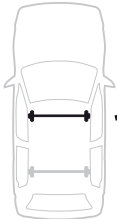
754



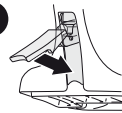
750



1



2

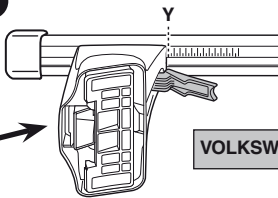
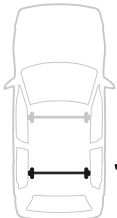


VOLKSWAGEN Gol, 5-dr Hatchback, 08-

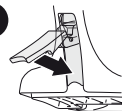
X

32

1



2



VOLKSWAGEN Gol, 5-dr Hatchback, 08-

Y

32

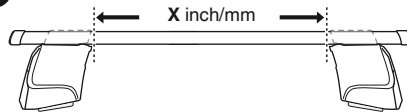


480R

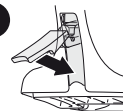


480

1



2



VOLKSWAGEN Gol, 5-dr Hatchback, 08-

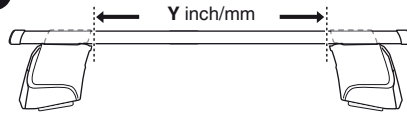
X inch

X mm

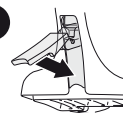
38 1/4"

971 mm

1



2



VOLKSWAGEN Gol, 5-dr Hatchback, 08-

Y inch

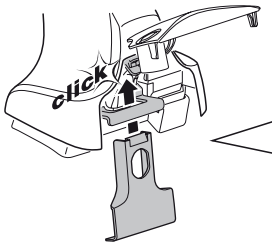
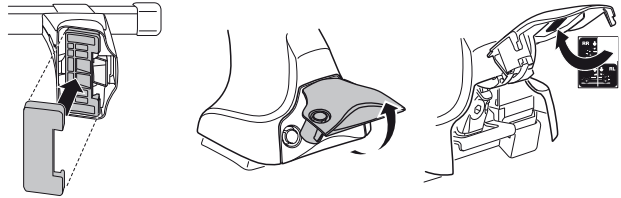
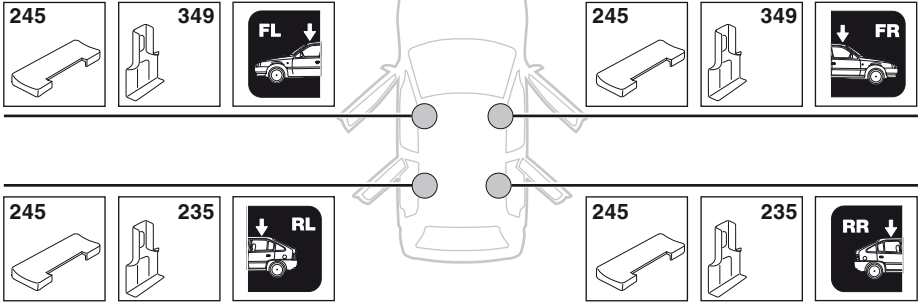
Y mm

38 1/4"

971 mm

4

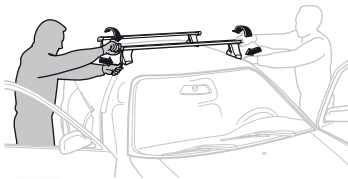
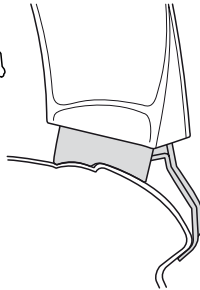
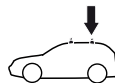
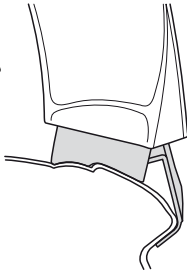
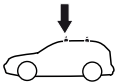
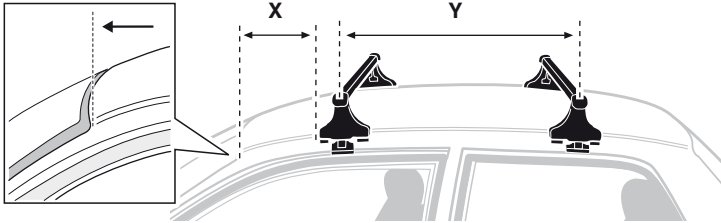
VOLKSWAGEN Gol, 5-dr Hatchback, 08-



5



	X mm	Y mm	X inch	Y inch
VOLKSWAGEN Gol, 5-dr Hatchback, 08-	200 mm	750 mm	7 7/8"	29 1/2"



GB/US Tighten alternately

D Die Schrauben abwechselnd anziehen

F Serrer alternativement chaque côté

NL Afwisselend aan de linker- en de rechterkant aandraaien

I Alternare il serraggio delle viti

E Apretar alternativamente

PT Aperte alternadamente

S Dra åt växelvis

FIN Kierrä vuorotellen

EST Pinguldage vaheldumisi

LAT Pielieciet pamišus

LIT Užsukinėkite pakaitomis

PL Śruby dokręcaj naprzemiennie

RU Затягивайте попеременно

CZ Pokręťta багаžníka dokręcaj dokręcaj naprzemiennie.

SK Doťahujte striedavo

SLO Privijajte izmenično.

HR Naizmjenično zategnite

HU Egymástól függetlenül szorítandó

GR Σφιγγετε εναλλάξ

TR Dönüşümlü sıkın

中文 交替拧紧

한국어 번갈아 가며 조이십시오.

日本語 交互に締め付けてください。

ไทย ชันในแบบสลับ

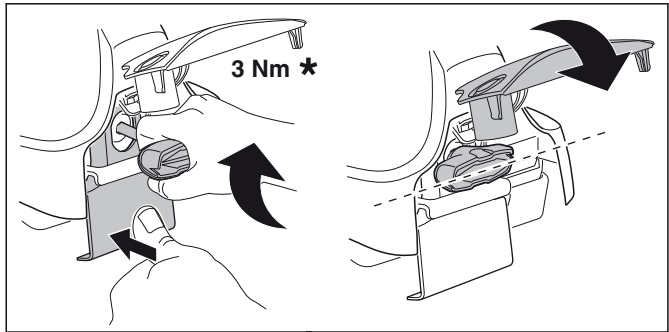
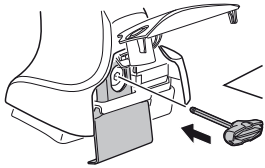
6



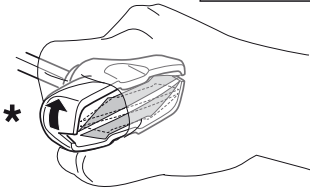
480R/754



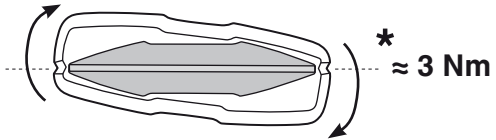
480



3 Nm *



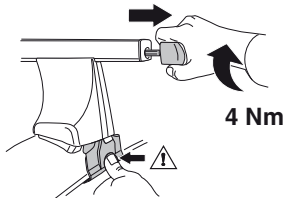
*



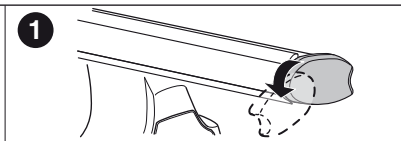
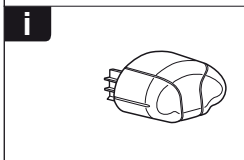
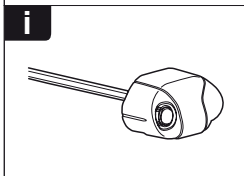
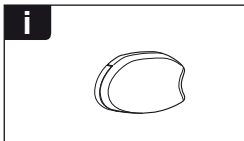
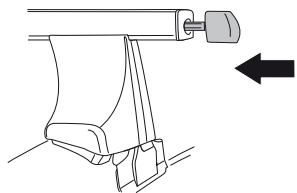
* ≈ 3 Nm



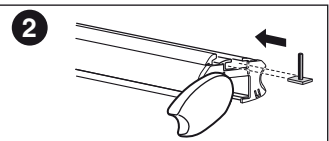
750



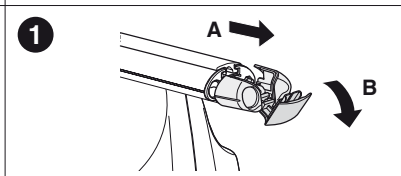
4 Nm



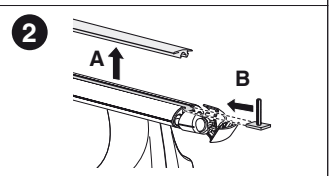
1



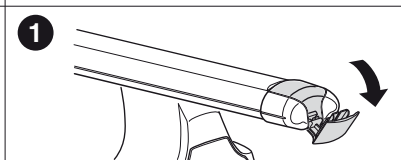
2



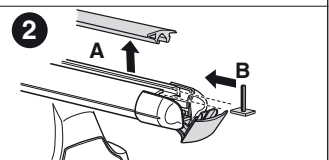
1



2



1



2



THULE
SWEDEN
**ONE
KEY
SYSTEM**



		(x4)
		(x6)
		(x8)
NA		(x10)
EUR		(x12)
ASIA		(x12)



WW ▶ Thule Sweden AB, Box 69, 330 33 Hillerstorp, SWEDEN
NA ▶ Thule Inc., 42 Silvermine Road, Seymour, Connecticut 06483, USA

info@thule.com
customer.service@thule.com

www.thule.com