



## Thule Rapid System Kit 1473

# > Instructions

TOYOTA Auris, 3-dr Hatchback, 06-12

The diagram is divided into four main sections:

- Top Left:** A dashed box containing an information icon (i), a warning triangle, an arrow pointing to a person reading a manual, and two instruction manuals labeled 'B' and 'A'. An arrow points from manual 'B' to manual 'A', which shows a car roof rack being installed.
- Top Right:** A weight calculation diagram. It shows a bag labeled 'xx kg / xx lbs' plus a roof rack labeled '7 kg / 15,4 lbs' and two screws labeled '3 kg / 6,6 lbs'. Below this, an equals sign leads to a box containing 'Max. 40 kg' and 'Max. 88 lbs'.
- Bottom Left:** A dashed box containing a warning triangle, three instruction manuals labeled 'A', 'B', and 'C', and a person reading a manual.
- Bottom Right:** A diagram of a car with arrows indicating the roof rack's position. A speedometer graphic shows a warning triangle between 40 km/h (25 Mph) and 80 km/h (50 Mph), with a maximum speed of 130 km/h (80 Mph).

ISO 11154-E

141473

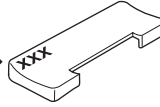
C.20140805  
519-1473-02

Bring your life  
thule.com

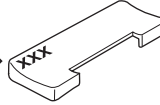


887 x4

266 x2



267 x2



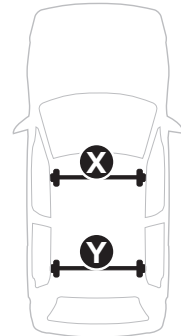
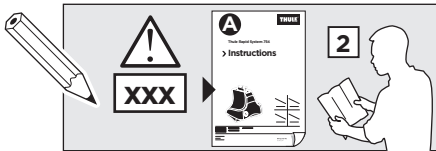
x1



x1

1

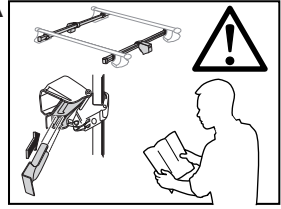
	X (scale)	X (mm)	X (inch)
TOYOTA Auris, 3-dr Hatchback, 06-12	36,5	1016	40



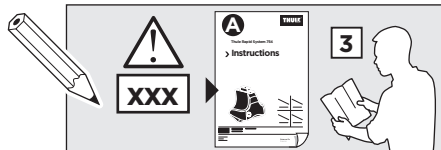
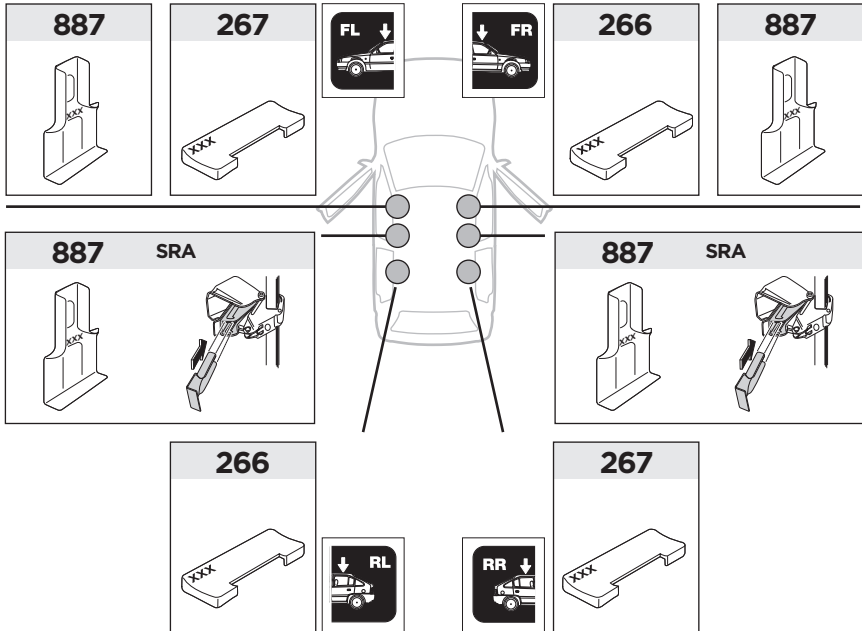
	Y (scale)	Y (mm)	Y (inch)
TOYOTA Auris, 3-dr Hatchback, 06-12	34,5	996	39 1/4

2

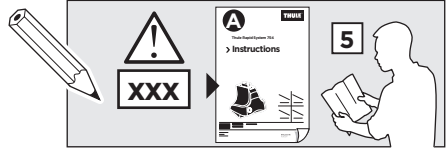
SRA



TOYOTA Auris, 3-dr Hatchback, 06-12



**3**



	W (mm)	Z (mm)	Y (mm)	W (inch)	Z (inch)	Y (inch)
<b>TOYOTA Auris, 3-dr Hatchback, 06-12</b>	<b>310</b>	<b>600</b>	<b>365</b>	<b>12 1/4</b>	<b>23 5/8</b>	<b>14 3/8</b>

