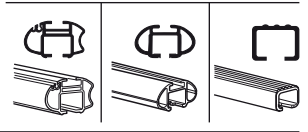
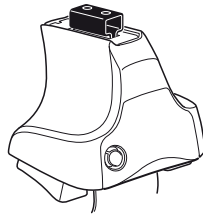


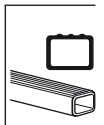
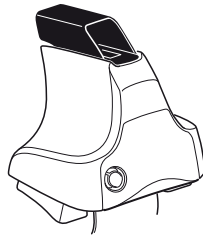
Kit 1428

PEUGEOT 1007, 3-dr Hatchback, 05-

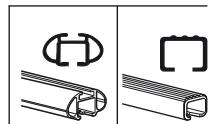
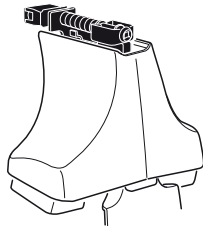
480R
754



480



750



THULE[®]
SWEDEN

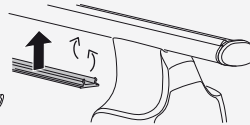
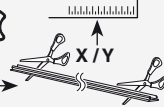
ISO 11154-E

x2	x2	x2	x2	x2
x2		x2	x2	
x2		x4	x2	
x4		x4		

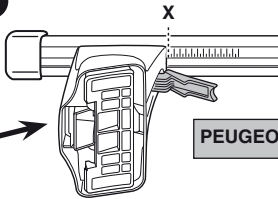
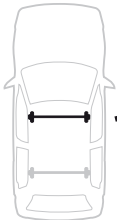
Kit



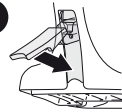
3



1



2

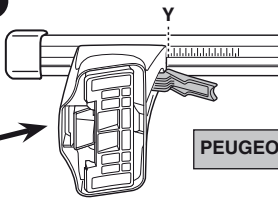


PEUGEOT 1007, 3-dr Hatchback, 05-

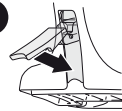
X

42

1



2



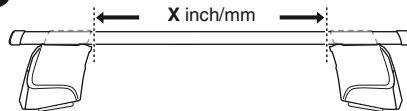
PEUGEOT 1007, 3-dr Hatchback, 05-

Y

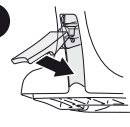
38,5



1



2



PEUGEOT 1007, 3-dr Hatchback, 05-

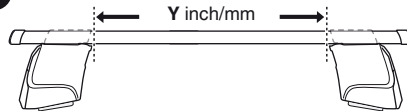
X inch

X mm

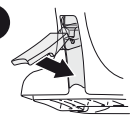
42 1/8"

1071 mm

1



2



PEUGEOT 1007, 3-dr Hatchback, 05-

Y inch

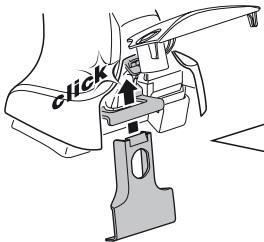
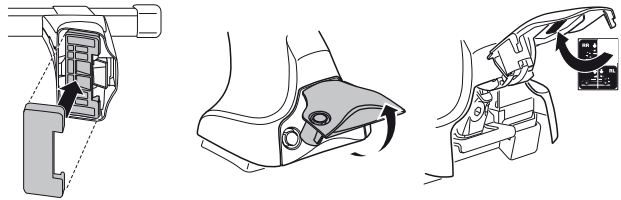
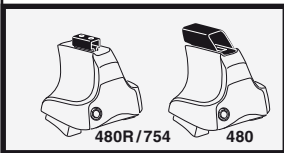
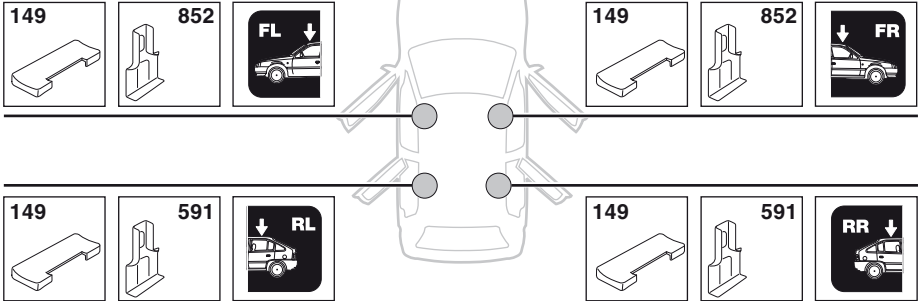
Y mm

40 3/4"

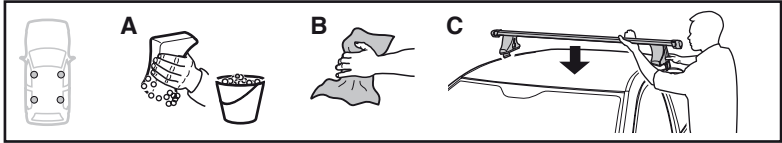
1036 mm

4

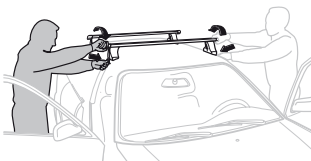
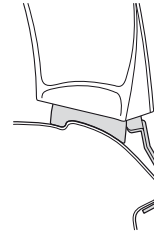
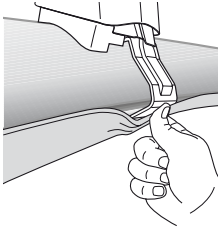
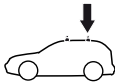
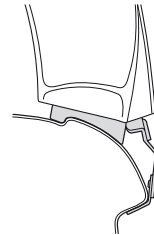
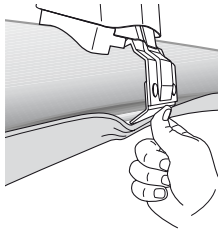
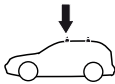
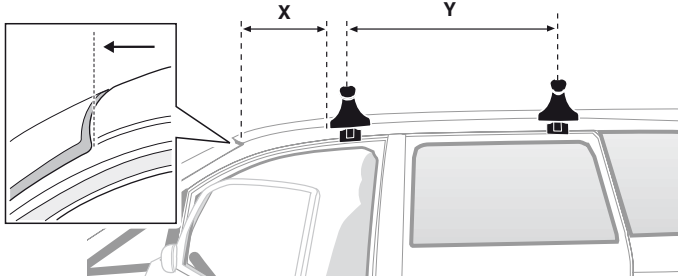
PEUGEOT 1007, 3-dr Hatchback, 05-



5



	X mm	Y mm	X inch	Y inch
PEUGEOT 1007, 3-dr Hatchback, 05-	250 mm	650 mm	9 7/8"	25 5/8"



GB/US Tighten alternately
D Die Schrauben abwechselnd anziehen
F Serrer alternativement chaque côté
NL Afwisselend aan de linker- en de rechterkant aandraaien
I Alternare il serraggio delle viti
E Apretar alternativamente
PT Aperte alternadamente
S Dra åt växelvis
FIN Kierrä vuorotellen
EST Pinguldage vaheldumisi
LAT Pievelciēt pamīšus
LIT Užsukinėkite pakaitomis
PL Śruby dokręcaj naprzemiennie
RU Затягивайте попеременно

CZ Pokrétla bagażnika dokręcaj dokręcaj naprzemiennie.
SK Dofahujte striedavo
SLO Privijajte izmenično.
HR Naizmjenično zategnite
HU Egmástól függetlenül szorítandó
GR Σφιγγείτε εναλλάξ
TR Dönüşümlü sıkın
中文 交替拧紧
한국어 번갈아 가며 조이십시오.
日本語 交互に締め付けてください。
ไทย ชั้สลับแบบสลับ

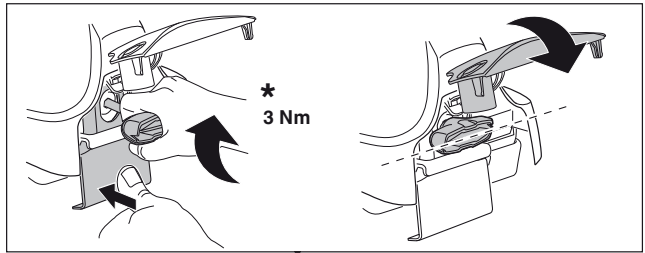
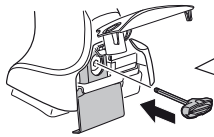
6



480R/754



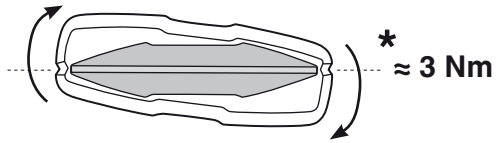
480



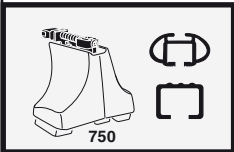
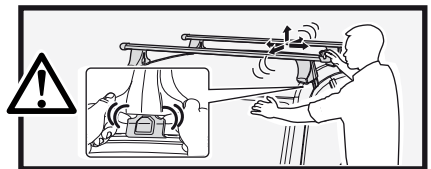
*
3 Nm



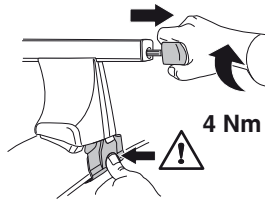
*



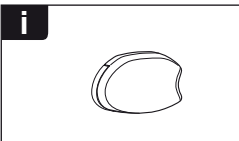
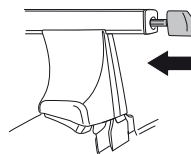
*
≈ 3 Nm



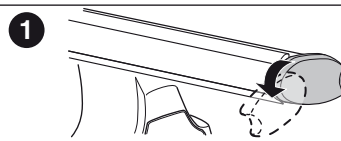
750



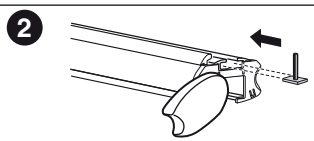
4 Nm



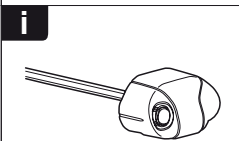
i



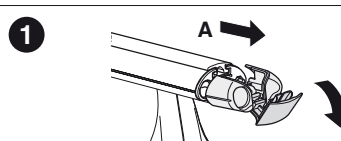
1



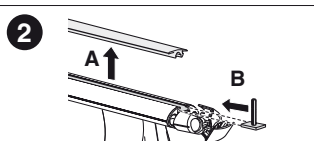
2



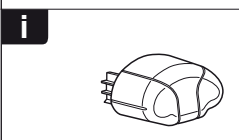
i



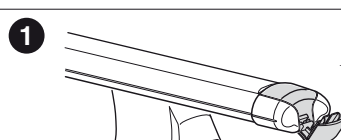
1



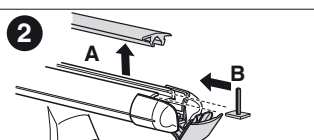
2



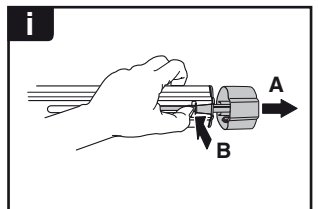
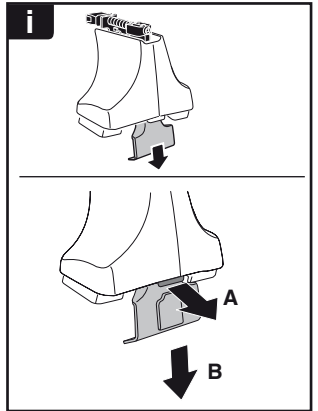
i



1



2



THULE
SWEDEN
**ONE
KEY
SYSTEM**



544		(x4)
596		(x6)
588		(x8)
NA 510		(x10)
EUR		
ASIA 452		(x12)



WW ▶ Thule Sweden AB, Box 69, 330 33 Hillerstorp, SWEDEN
NA ▶ Thule Inc., 42 Silvermine Road, Seymour, Connecticut 06483, USA

info@thule.com
customer.service@thule.com

www.thule.com