

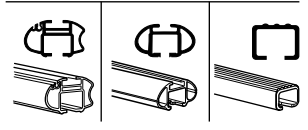
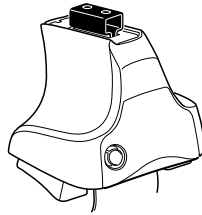
Kit 1414

HYUNDAI Grandeur, 4-dr Sedan, 05-

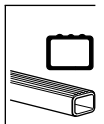
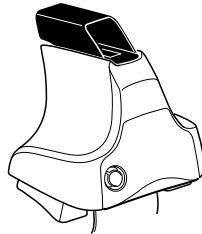
HYUNDAI Azera, 4-dr Sedan, *06-

*North America

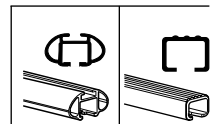
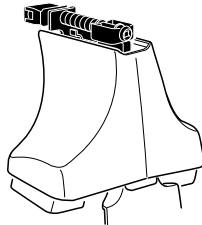
480R
754



480



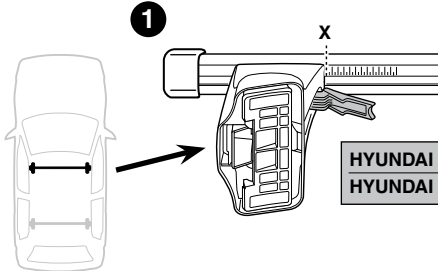
750



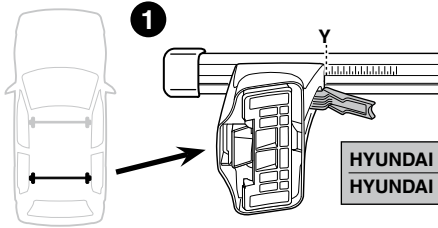
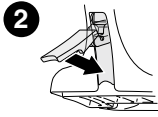
x2 x2 x2 x4	x2	x2 x2 x4 x4	x2 x2	x2

Kit

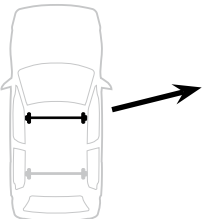
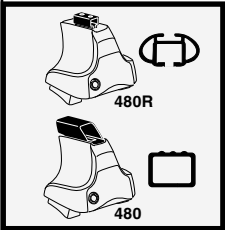
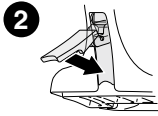




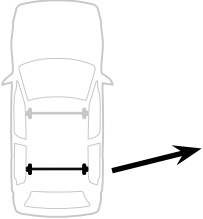
	X
HYUNDAI Grandeur, 4-dr Sedan, 05-	40,5
HYUNDAI Azera, 4-dr Sedan, *06-	40,5



	Y
HYUNDAI Grandeur, 4-dr Sedan, 05-	39,5
HYUNDAI Azera, 4-dr Sedan, *06-	39,5



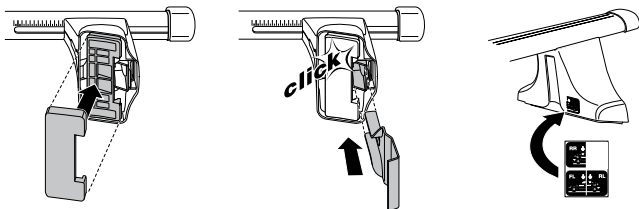
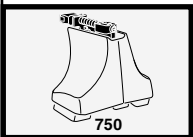
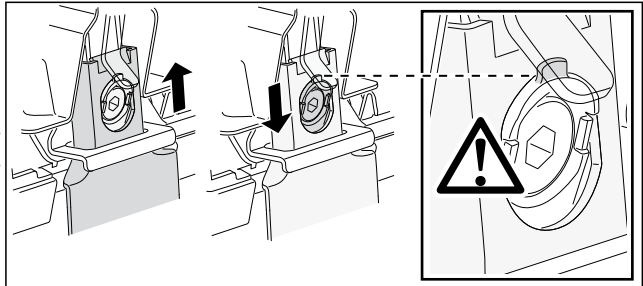
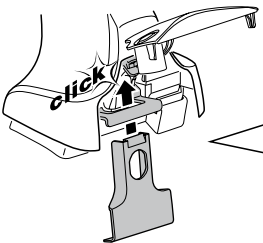
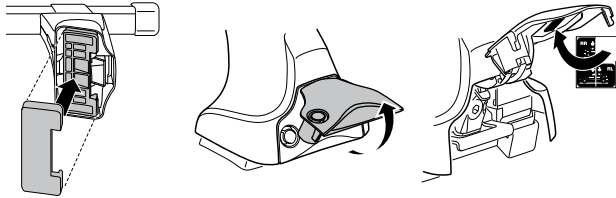
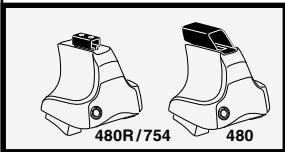
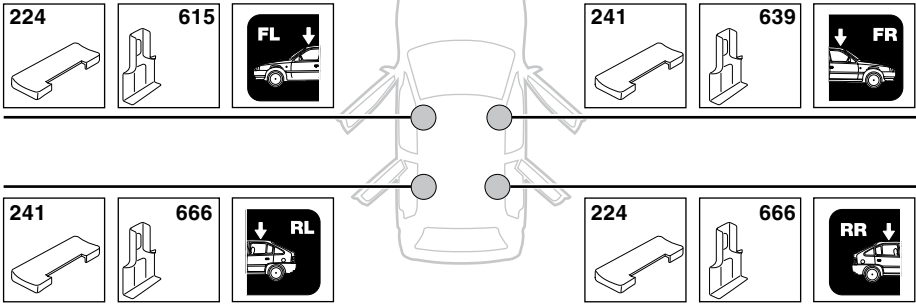
	X inch	X mm
HYUNDAI Grandeur, 4-dr Sedan, 05-	41 5/8"	1056 mm
HYUNDAI Azera, 4-dr Sedan, *06-	41 5/8"	1056 mm



	Y inch	Y mm
HYUNDAI Grandeur, 4-dr Sedan, 05-	41 1/8"	1046 mm
HYUNDAI Azera, 4-dr Sedan, *06-	41 1/8"	1046 mm

4

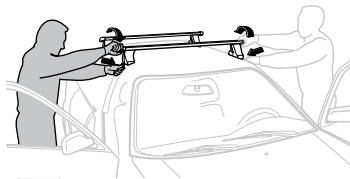
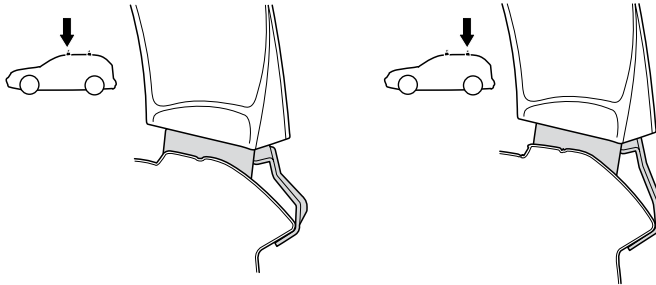
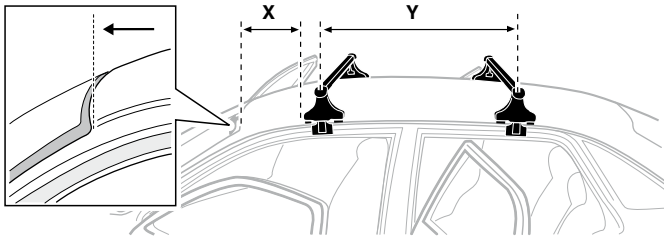
HYUNDAI Grandeur, 4-dr Sedan, 05-
 HYUNDAI Azera, 4-dr Sedan, *06-



5



	X mm	Y mm	X inch	Y inch
HYUNDAI Grandeur, 4-dr Sedan, 05-	240 mm	660 mm	9 1/2"	26"
HYUNDAI Azera, 4-dr Sedan, *06-	240 mm	660 mm	9 1/2"	26"



GB/US Tighten alternately

D Die Schrauben abwechselnd anziehen

F Serrer alternativement chaque côté

NL Afwisselend aan de linker- en de rechterkant aandraaien

I Alternare il serraggio delle viti

E Serrare alternativamente

PT Aperte alternadamente

S Dra åt växelvis

FIN Kierrä vuorotellen

EST Pinguldage vaheldumisi

LAT Pielvelciet pamišus

LIT Užsukinėkite pakaitomis

PL Śruby dokręcaj naprzemiennie

RU Затягивайте попеременно

CZ Pokręťta bagažníka dokręcaj dokręcaj naprzemiennie.

SK Doťahujte striedavo

SLO Privijajte izmenično.

HR Naizmjenično zategnite

HU Egymástól függetlenül szorítandó

GR Σφίγγετε εναλλάξ

TR Dönüşümlü sıkın

中文 交替拧紧

한국어 번갈아 가며 조이십시오.

日本語 交互に締め付けてください。

ไทย ชั้โน้แบบสลับ

6



480R/754



480



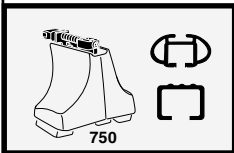
*
3 Nm



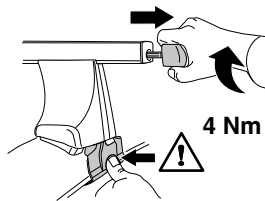
*



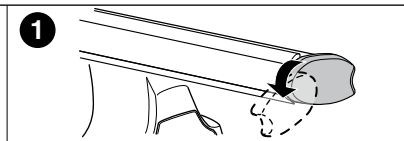
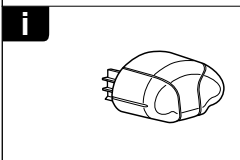
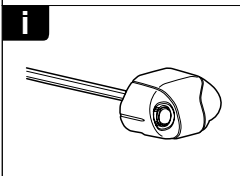
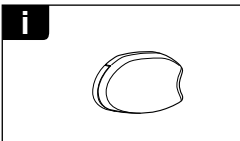
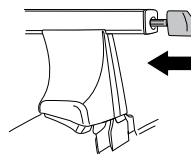
*
≈ 3 Nm



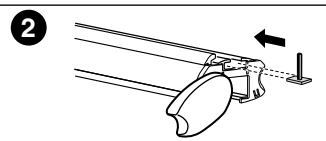
750



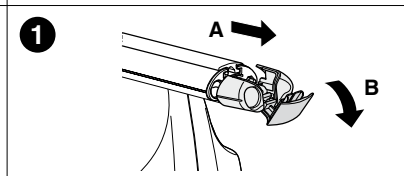
4 Nm



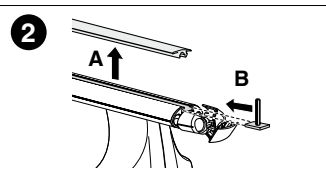
1



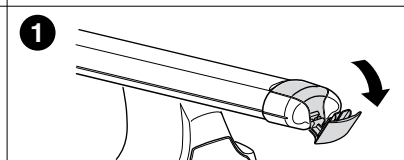
2



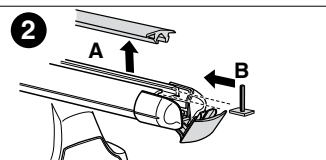
1



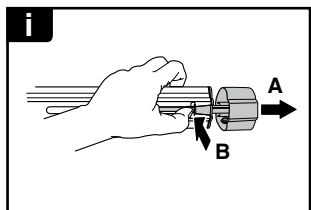
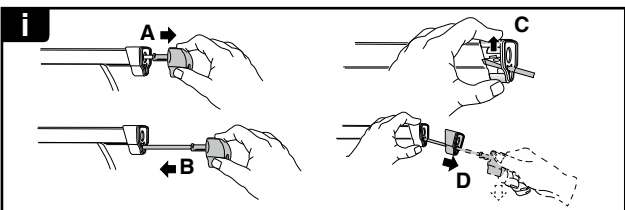
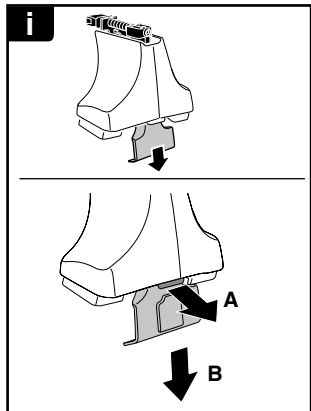
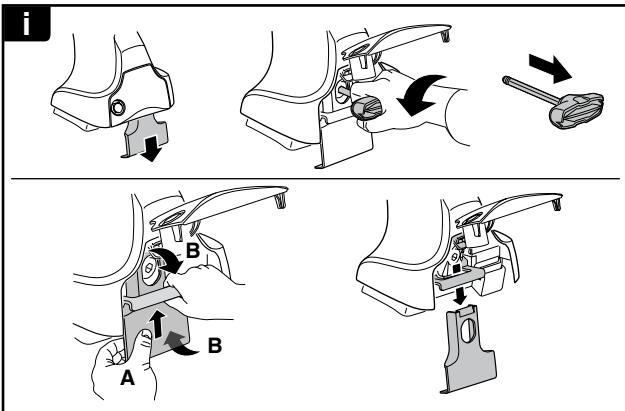
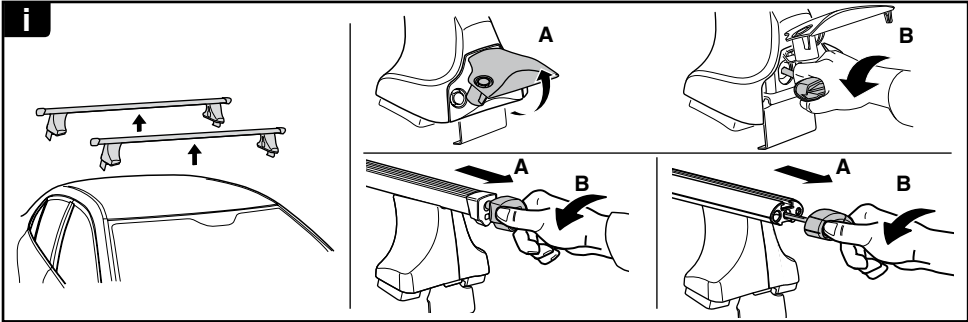
2



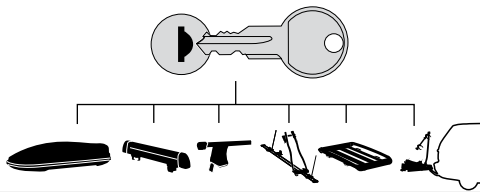
1



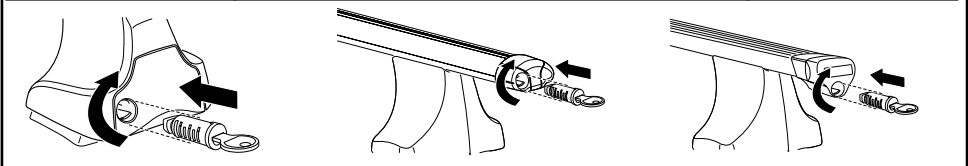
2



THULE
SWEDEN
**ONE
KEY
SYSTEM**



- 544 (x4)
- 596 (x6)
- 588 (x8)
- NA 510 (x10)
- EUR 452 (x12)
- ASIA



WW ▶ Thule Sweden AB, Box 69, 330 33 Hillerstorp, SWEDEN
NA ▶ Thule Inc., 42 Silvermine Road, Seymour, Connecticut 06483, USA

info@thule.com
customer.service@thule.com

www.thule.com