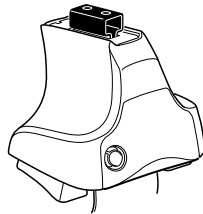


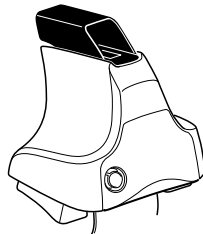
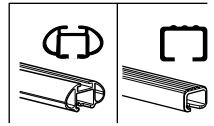
Kit 1403

KIA Magentis, 4-dr Sedan, 06–
KIA Optima, 4-dr Sedan, *07-10

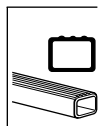
*North America



754 Rapid System
480R Rapid Traverse (North America)



480 Traverse (North America)



Max.
50 kg
Max.
110 lbs

80 km/h
50 Mph **130 km/h**
80 Mph
40 km/h
25 Mph
km/h
Mph

THULE
Kit XXXX
instructions
THULE

x1 **x4**
754 Rapid System
480R Rapid Traverse (North America)
x4 **x4**

x1 **x4**
754 Rapid System
480R Rapid Traverse (North America)
x4 **x4**

x1 **x4**
480 Traverse (North America)
x4 **x4**

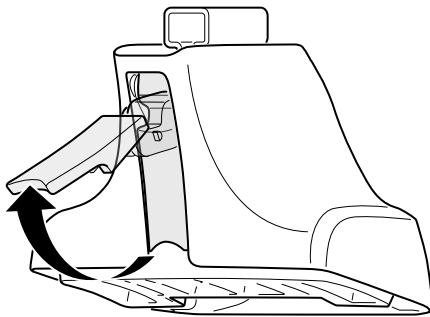
x2 **x2** **x1** **x2** **x2**
23 mm **17 mm**
x2 **x2** **x2**
23 mm
x4 **x2** **x2**
x4 **x4**

(North America)
x2 **x2**

780 x2 **140 x2**
945 x2 **141 x2**
x1

RR **FR**
FL **RL**

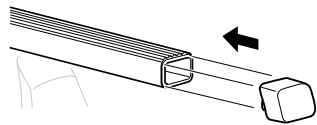
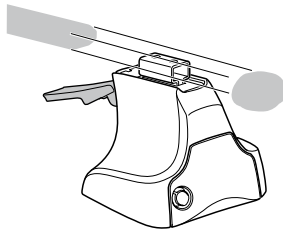
1



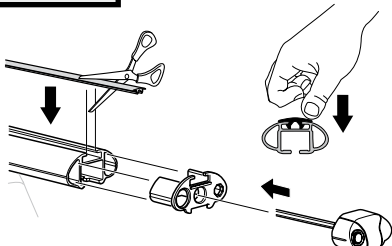
2



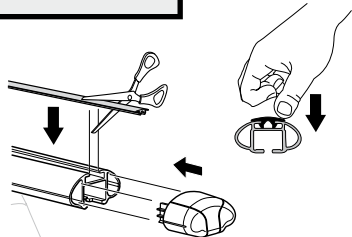
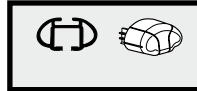
754 Rapid System
480R Rapid Traverse
(North America)



x4



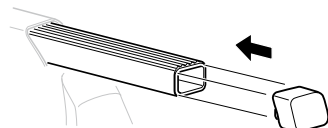
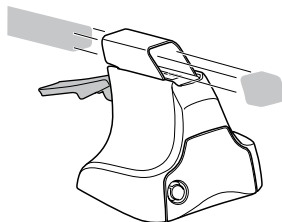
x4



x4

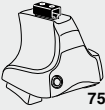


480 Traverse
(North America)

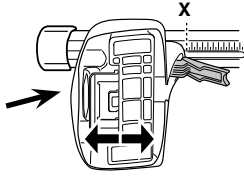


x4

3

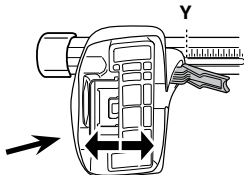


754 Rapid System



X

	X
KIA Magentis, 4-dr Sedan, 06-	37
KIA Optima, 4-dr Sedan, *07-10	37



Y

	Y
KIA Magentis, 4-dr Sedan, 06-	36
KIA Optima, 4-dr Sedan, *07-10	36

3



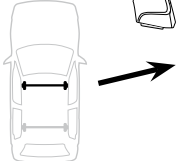
480R Rapid Traverse



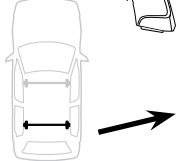
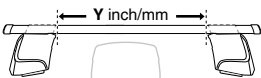
480 Traverse



(North America)

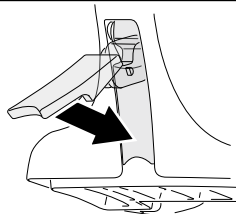


	X inch	X mm
KIA Magentis, 4-dr Sedan, 06-	40 1/4"	1021 mm
KIA Optima, 4-dr Sedan, *07-10	40 1/4"	1021 mm



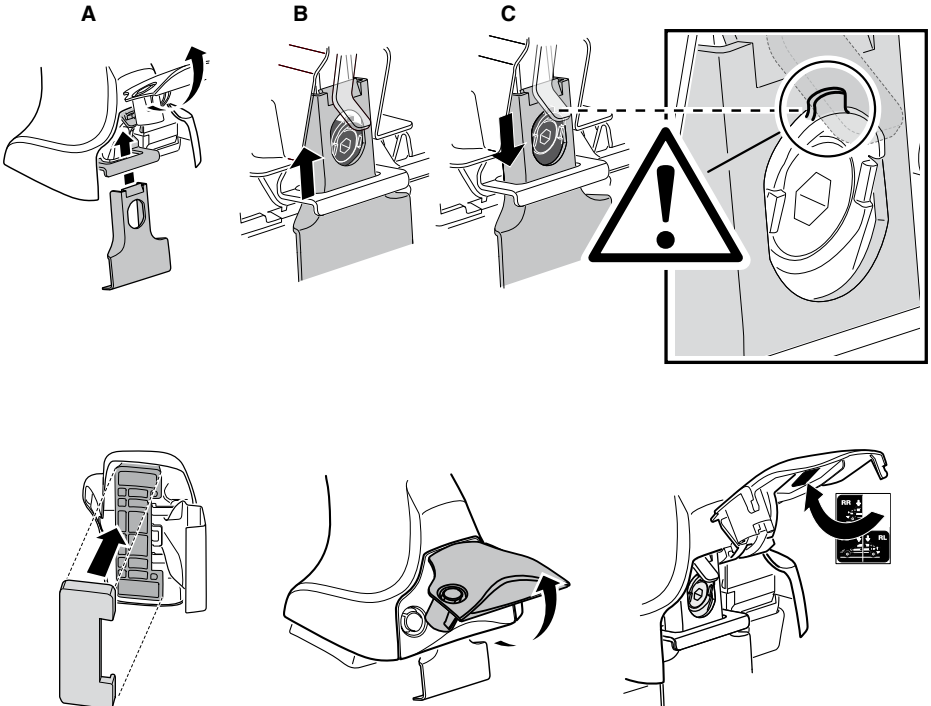
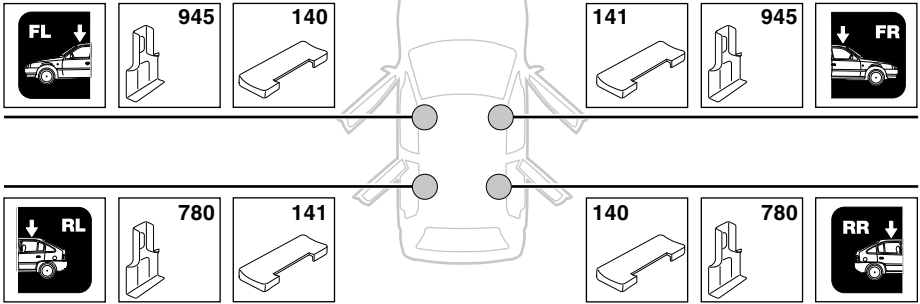
	Y inch	Y mm
KIA Magentis, 4-dr Sedan, 06-	39 3/4"	1011 mm
KIA Optima, 4-dr Sedan, *07-10	39 3/4"	1011 mm

4

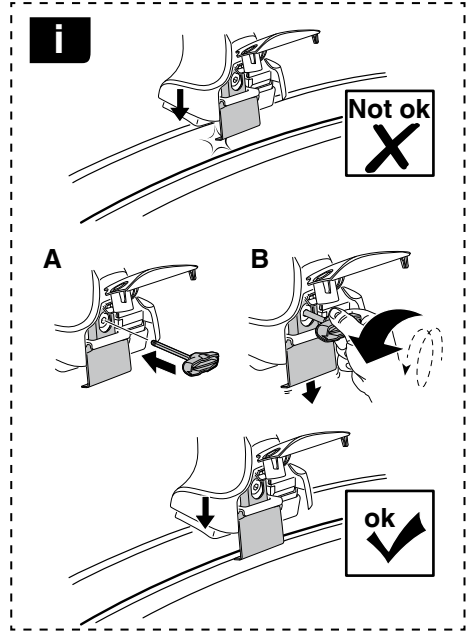
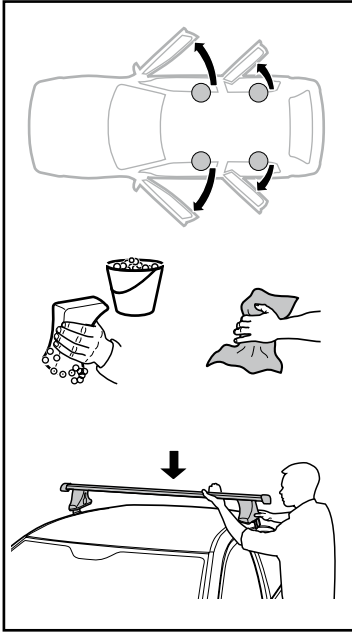


5

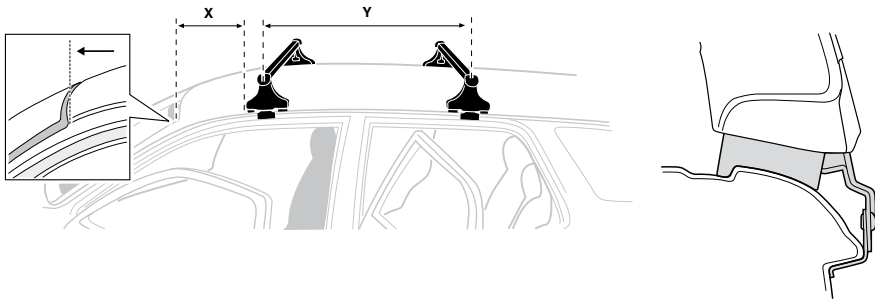
KIA Magentis, 4-dr Sedan, 06-
KIA Optima, 4-dr Sedan, *07-10



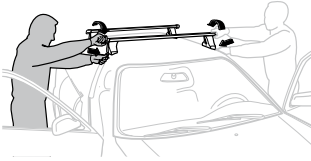
6



	X mm	Y mm	X inch	Y inch
KIA Magentis, 4-dr Sedan, 06-	250 mm	670 mm	9 7/8"	26 3/8"
KIA Optima, 4-dr Sedan, *07-10	250 mm	670 mm	9 7/8"	26 3/8"



7



GB/US Tighten alternately
 D Die Schrauben abwechselnd anziehen
 F Serrer alternativement chaque côté
 NL Afwisselend aan de linker- en de rechterkant aandraaien
 I Alternare il serraggio delle viti
 E Apertar alternativamente
 PT Aperte alternadamente
 S Dra åt växelvis
 FIN Kierrä vuorotellen
 EST Pinguldage vaheldumisi
 LAT Pievelciēt pamišus
 LIT Užsukinėkite pakaitomis
 PL Śruby dokręcaj naprzemiennie
 RU Затягивайте попеременно

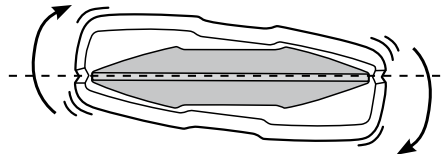
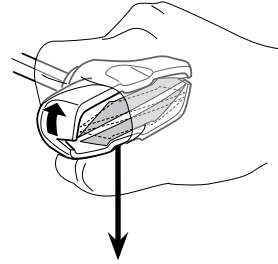
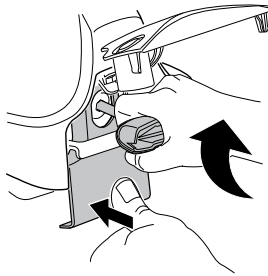
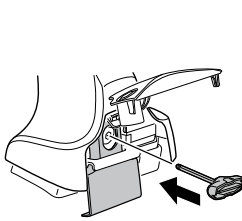
CZ Pokrétla bagażnika dokręcaj dokręcaj naprzemiennie.
 SK Doťahujte striedavo
 SLO Privijajte izmenično.
 HR Naizmjenično zategnite
 HU Egy mástól függetlenül szorítandó
 GR Σφιγγεται εναλλάξ
 TR Dönüşümlü sıkın

中文 交替拧紧

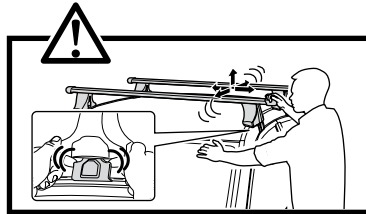
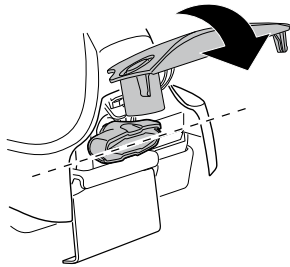
한국어 번갈아 가며 조이십시오.

日本語 交互に締め付けてください。

ไทย ชั้้นในแบบสลับ



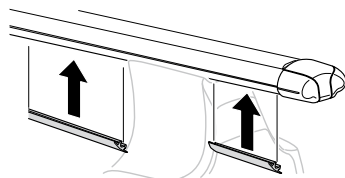
≈ 3 Nm

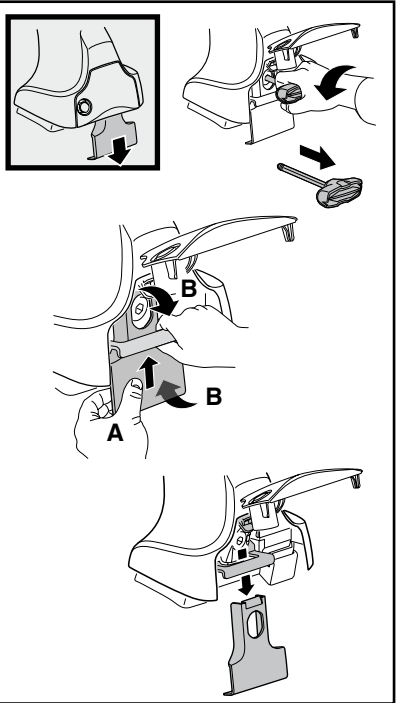
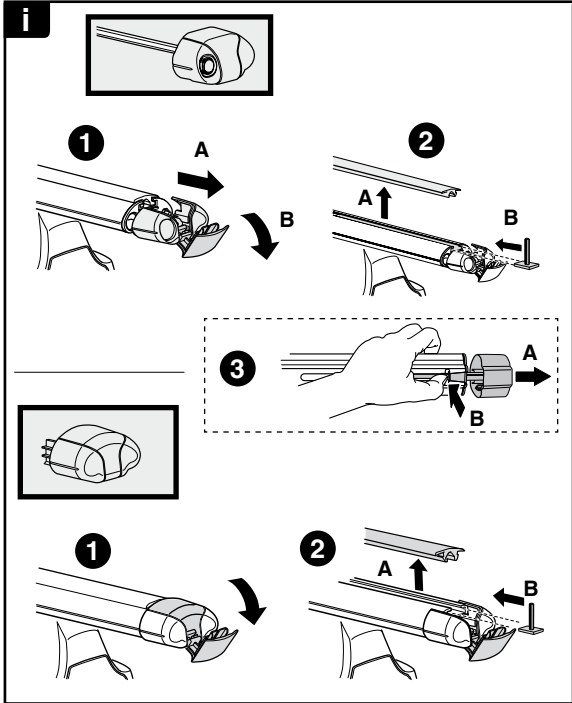


8

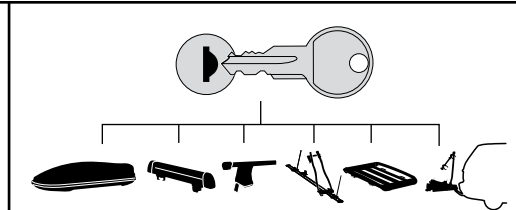


x1
17 mm

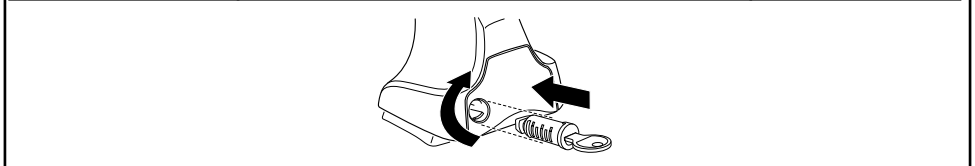




THULE
SWEDEN
**ONE
KEY
SYSTEM**



		544	(x4)
		596	(x6)
		588	(x8)
NA		510	(x10)
EUR		452	(x12)
ASIA			



WW ▶ Thule Sweden AB, Box 69, 330 33 Hillerstorp, SWEDEN
NA ▶ Thule Inc., 42 Silvermine Road, Seymour, Connecticut 06483, USA

info@thule.com
customer.service@thule.com

www.thule.com