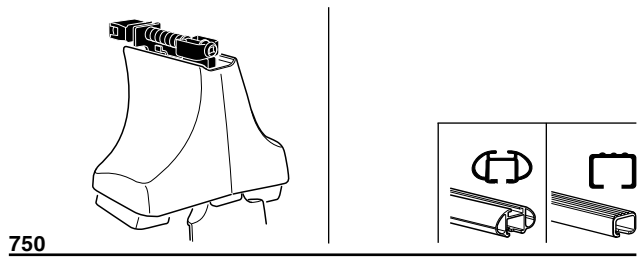
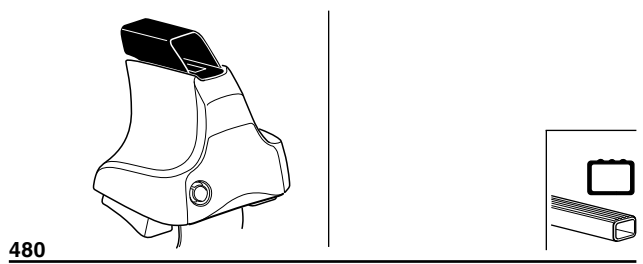
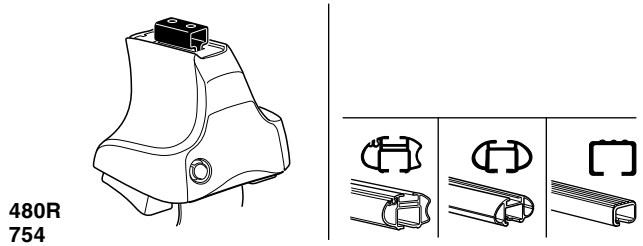


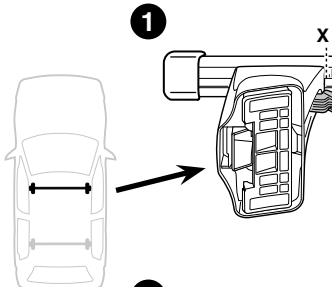
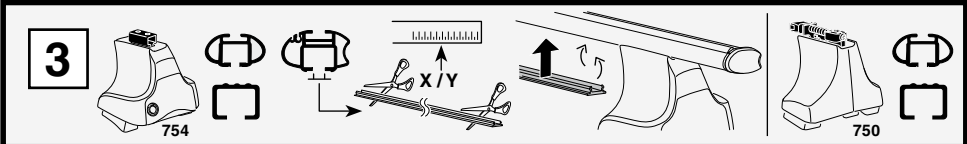
Kit 1393

VOLKSWAGEN Jetta, 4-dr Sedan, 05–
VOLKSWAGEN GLI, 4-dr Sedan, *08–
*North America

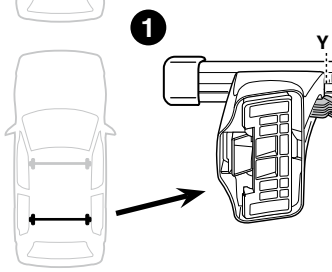


Kit

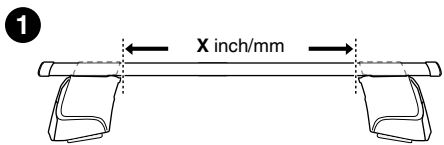
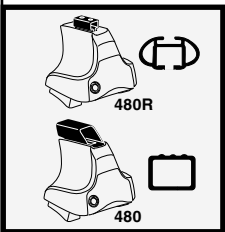
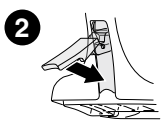




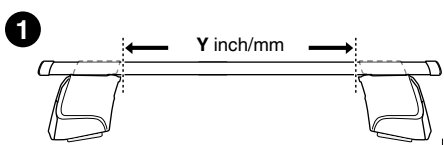
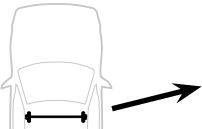
	X
VOLKSWAGEN Jetta, 4-dr Sedan, 05–	38,5
VOLKSWAGEN GLI, 4-dr Sedan, *08–	38,5



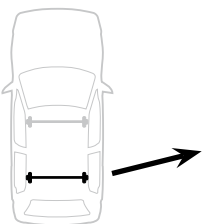
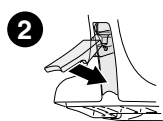
	Y
VOLKSWAGEN Jetta, 4-dr Sedan, 05–	35
VOLKSWAGEN GLI, 4-dr Sedan, *08–	35



	X inch	X mm
VOLKSWAGEN Jetta, 4-dr Sedan, 05–	40 3/4"	1036 mm
VOLKSWAGEN GLI, 4-dr Sedan, *08–	40 3/4"	1036 mm

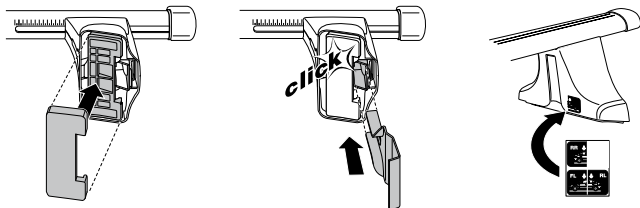
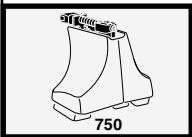
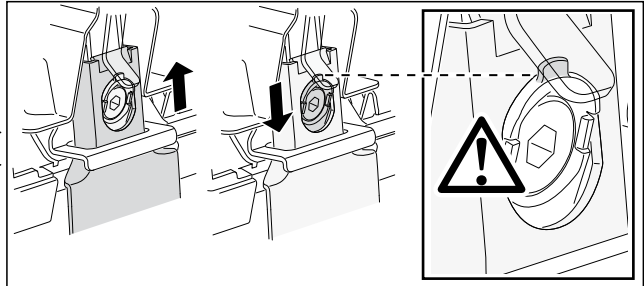
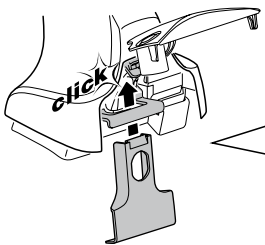
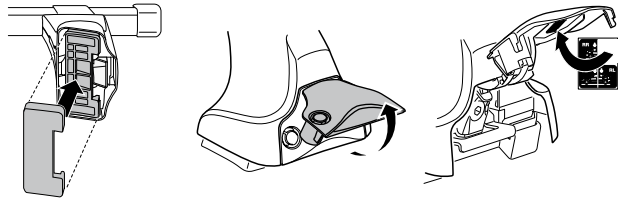
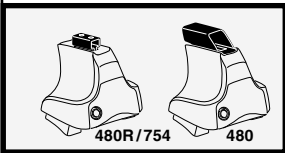
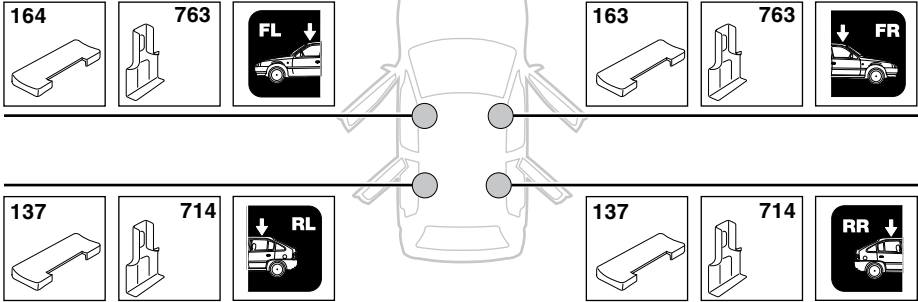


	Y inch	Y mm
VOLKSWAGEN Jetta, 4-dr Sedan, 05–	39 7/8"	1001 mm
VOLKSWAGEN GLI, 4-dr Sedan, *08–	39 7/8"	1001 mm



4

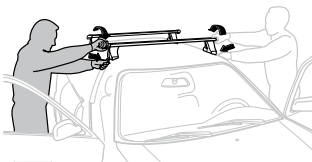
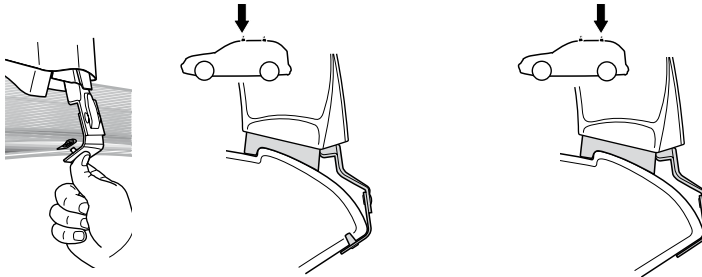
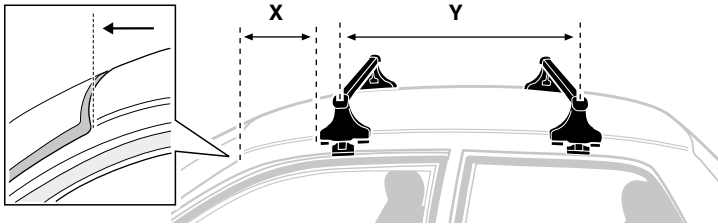
VOLKSWAGEN Jetta, 4-dr Sedan, 05–
VOLKSWAGEN GLI, 4-dr Sedan, *08–



5



	X mm	Y mm	X inch	Y inch
VOLKSWAGEN Jetta, 4-dr Sedan, 05–	320 mm	725 mm	12 ⁵ / ₈ ”	28 ¹ / ₄ ”
VOLKSWAGEN GLI, 4-dr Sedan, *08–	320 mm	725 mm	12 ⁵ / ₈ ”	28 ¹ / ₄ ”



- | | | | |
|--------------|---|------------|---|
| GB/US | Tighten alternately | CZ | Pokrétla багаžника докřeќај докřeќај напزمение. |
| D | Die Schrauben abwechselnd anziehen | SK | Doťahujte striedavo |
| F | Serrer alternativement chaque côté | SLO | Privijajte izmenično. |
| NL | Afwisselend aan de linker- en de rechterkant aandraaien | HR | Naizmjenično zategnite |
| I | Alternare il serraggio delle viti | HU | Egymástól függetlenül szorítandó |
| E | Apretar alternativamente | GR | Σφιγγετε εναλλάξ |
| PT | Aperte alternadamente | TR | Dönüşümlü sıkın |
| S | Dra åt växelvis | 中文 | 交替拧紧 |
| FIN | Kierrä vuorotellen | 한국어 | 번갈아 가며 조이십시오. |
| EST | Pinguldage vaheldumisi | 日本語 | 交互に締め付けてください。 |
| LAT | Pievelciet pamišus | ไทย | ขันในแบบสลับ |
| LIT | Užsukinėkite pakaitomis | | |
| PL | Śruby dokręcaj naprzemiennie | | |
| RU | Затягивайте попеременно | | |

6



480R/754



480



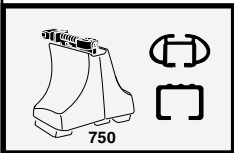
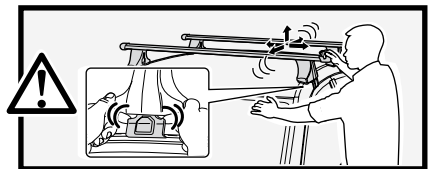
*
3 Nm



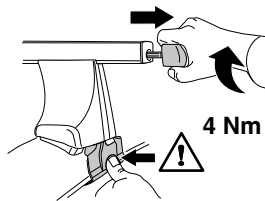
*



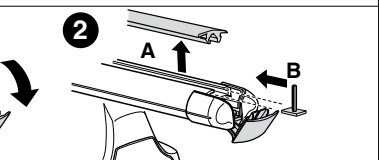
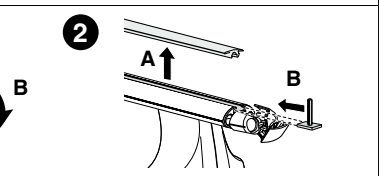
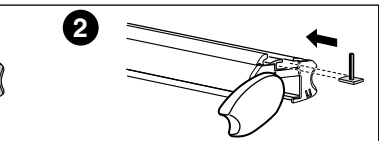
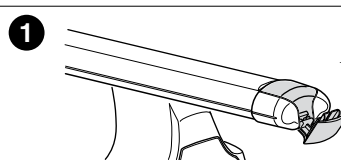
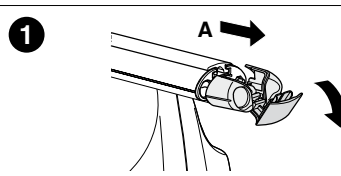
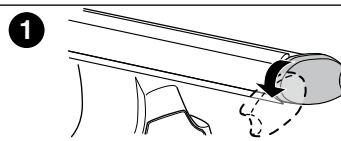
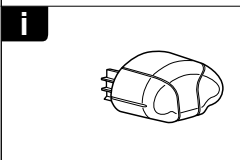
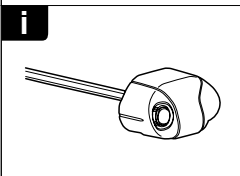
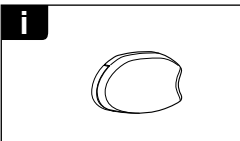
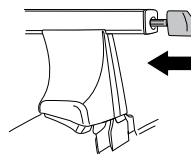
*
≈ 3 Nm



750



4 Nm





THULE
SWEDEN
**ONE
KEY
SYSTEM**



		(x4)
		(x6)
		(x8)
NA		(x10)
EUR		(x12)
ASIA		(x12)



WW ▶ Thule Sweden AB, Box 69, 330 33 Hillerstorp, SWEDEN
NA ▶ Thule Inc., 42 Silvermine Road, Seymour, Connecticut 06483, USA

info@thule.com
customer.service@thule.com

www.thule.com

503-1393-02