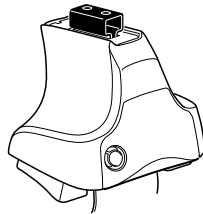


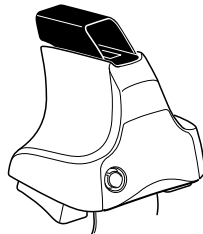
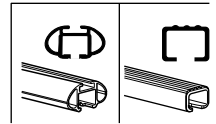
Kit 1390

NISSAN Serena, 5-dr MPV, 05-09

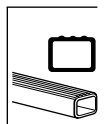
SUZUKI Landy, 5-dr MPV, 07-09



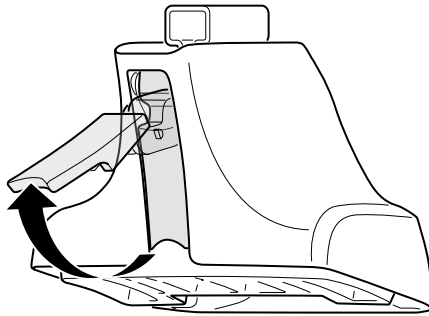
754 Rapid System
480R Rapid Traverse (North America)



480 Traverse (North America)



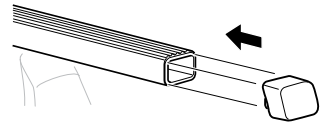
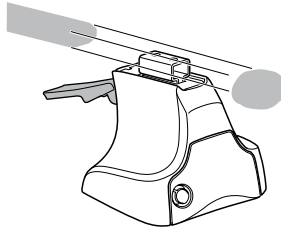
1



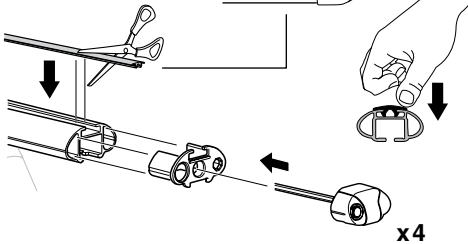
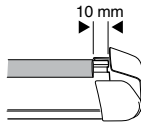
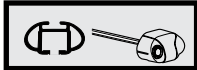
2



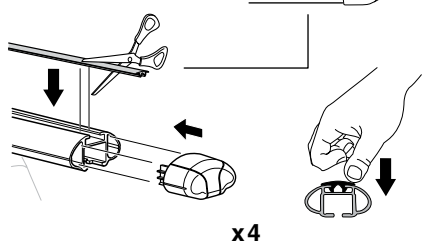
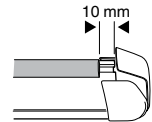
754 Rapid System
480R Rapid Traverse
(North America)



x4



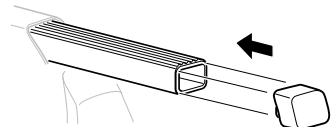
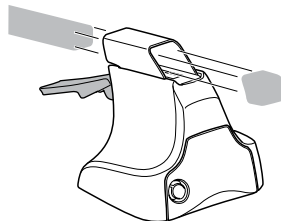
x4



x4

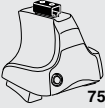


480 Traverse
(North America)

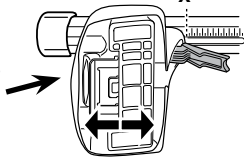


x4

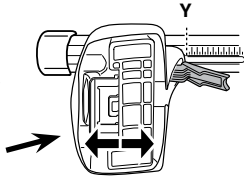
3



754 Rapid System



	X
NISSAN Serena, 5-dr MPV, 05-09	42,5
SUZUKI Landy, 5-dr MPV, 07-09	42,5



	Y
NISSAN Serena, 5-dr MPV, 05-09	41,5
SUZUKI Landy, 5-dr MPV, 07-09	41,5

3

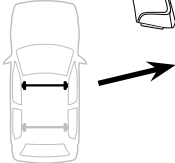


480R Rapid Traverse

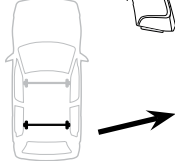


480 Traverse

(North America)

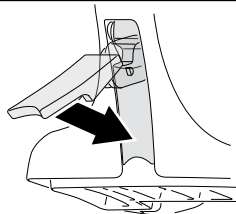


	X inch	X mm
NISSAN Serena, 5-dr MPV, 05-09	42 ³/₈ "	1076 mm
SUZUKI Landy, 5-dr MPV, 07-09	42 ³/₈ "	1076 mm



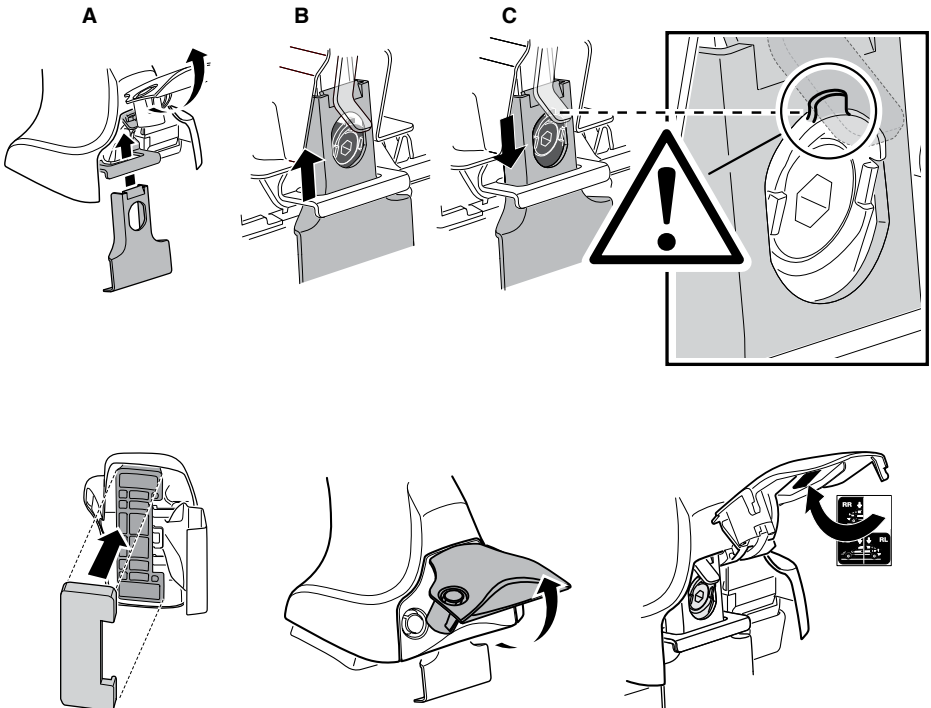
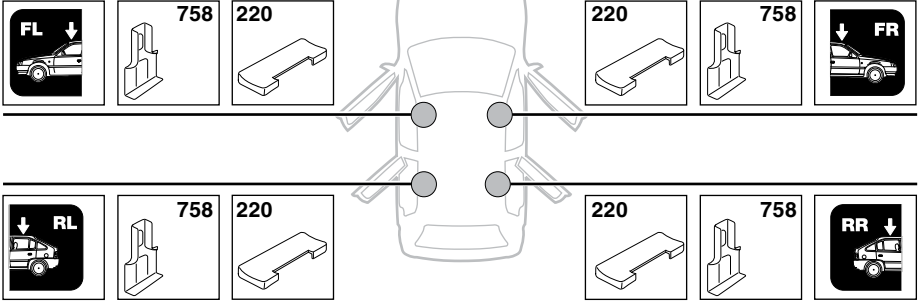
	Y inch	Y mm
NISSAN Serena, 5-dr MPV, 05-09	42"	1066 mm
SUZUKI Landy, 5-dr MPV, 07-09	42"	1066 mm

4

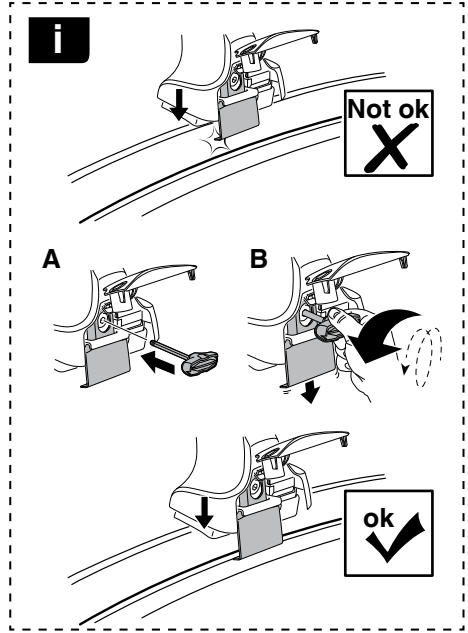
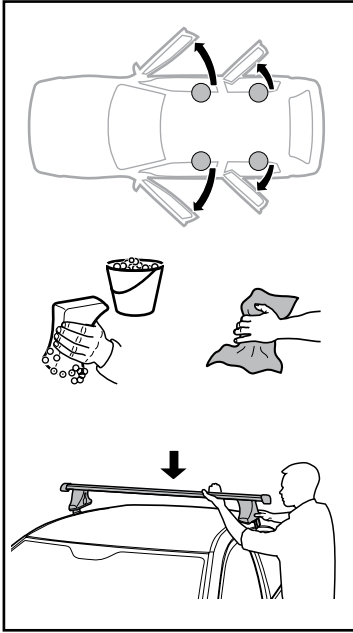


5

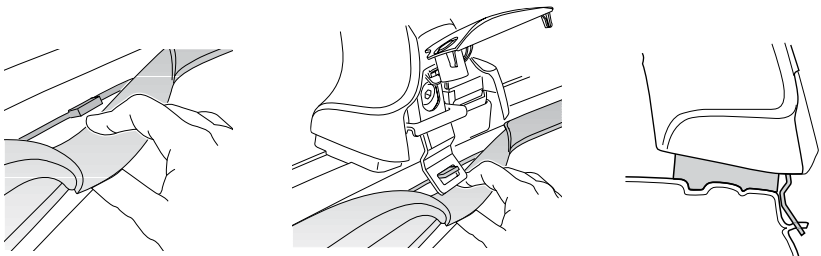
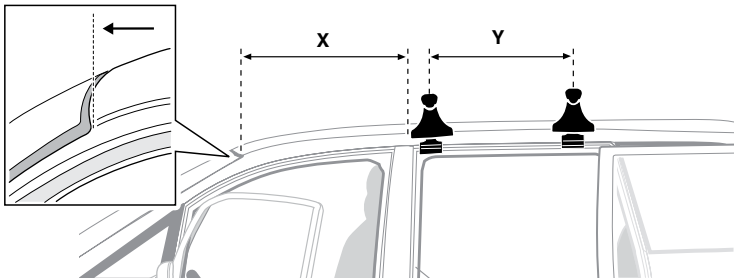
NISSAN Serena, 5-dr MPV, 05-09
SUZUKI Landy, 5-dr MPV, 07-09



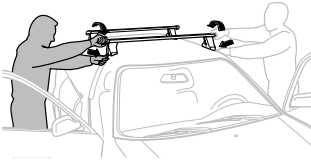
6



	X mm	Y mm	X inch	Y inch
NISSAN Serena, 5-dr MPV, 05-09	835 mm	635 mm	32 7/8"	25"
SUZUKI Landy, 5-dr MPV, 07-09	835 mm	635 mm	32 7/8"	25"



7



GB/US	Tighten alternately
D	Die Schrauben abwechselnd anziehen
F	Serrer alternativement chaque côté
NL	Afwisselend aan de linker- en de rechterkant aandraaien
I	Alternare il serraggio delle viti
E	Apertar alternativamente
PT	Aperte alternadamente
S	Dra åt växelvis
FIN	Kierrä vuorotellen
EST	Pinguldage vaheldumisi
LAT	Pielveiciet pamišus
LIT	Užsukinėkite pakaitomis
PL	Śruby dokręcaj naprzemiennie
RU	Затягивайте попеременно

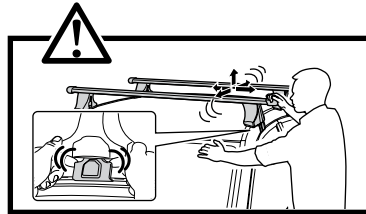
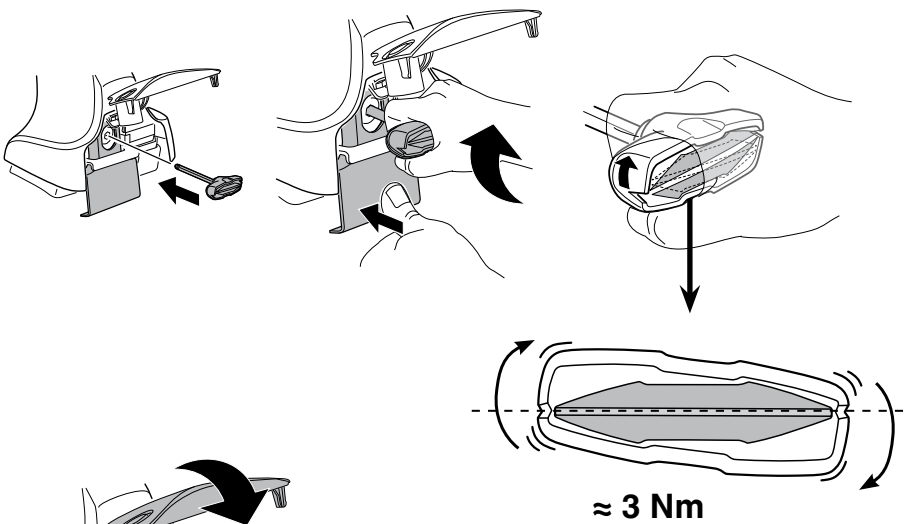
CZ	Pokręřta багаžnika dokręcaj naprzemiennie.
SK	Dofahajte striedavo
SLO	Privijajte izmenično.
HR	Naizmjenično zategnite
HU	Egymástól függetlenül szorítandó
GR	Σφιγίγες εναλλάξ
TR	Dönüşümlü sıkın

中文 交替拧紧

한국어 번갈아 가며 조이십시오.

日本語 交互に締め付けてください。

ไทย ชันในแบบสลับ



8

