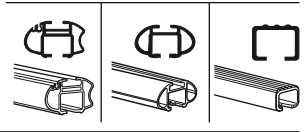
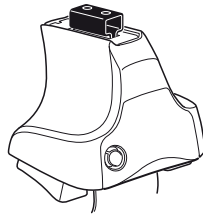


# Kit 1289

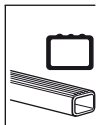
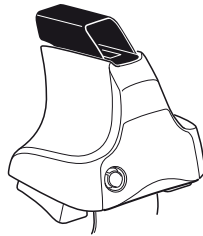
TOYOTA Hilux Surf, 5-dr SUV, 02-09

TOYOTA 4Runner, 5-dr SUV, 02-09

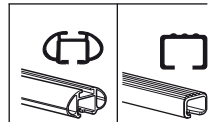
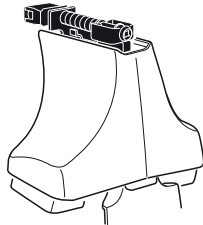
480R  
754



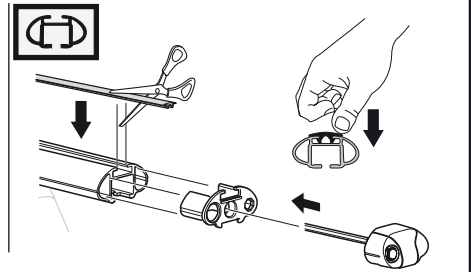
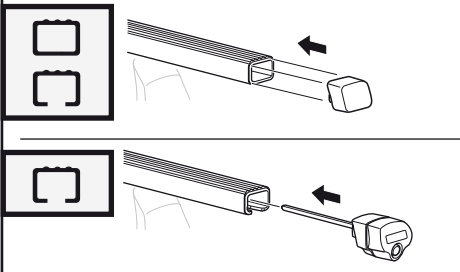
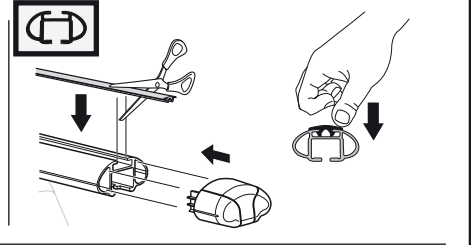
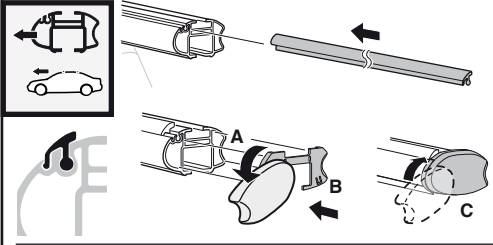
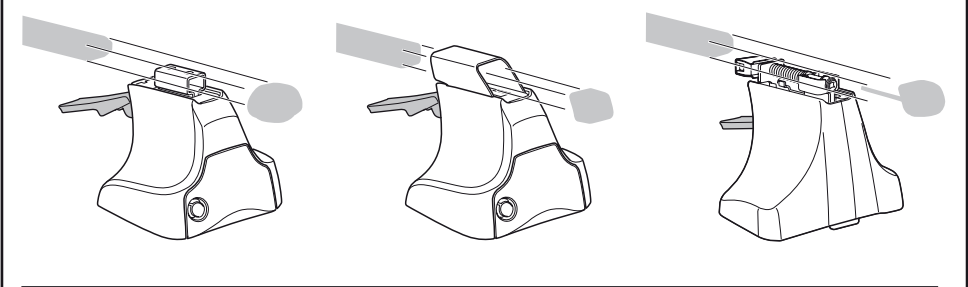
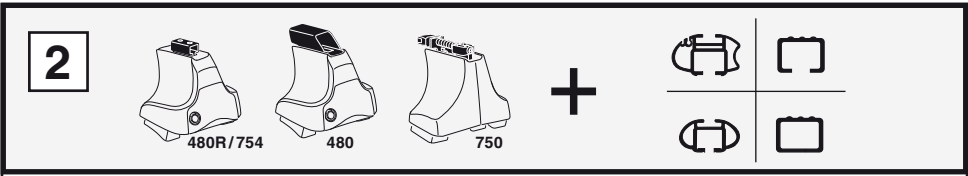
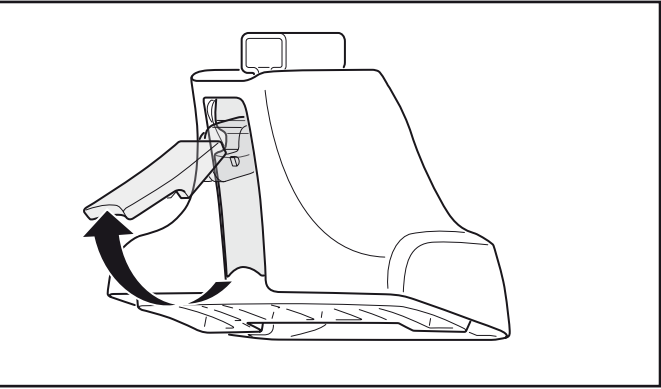
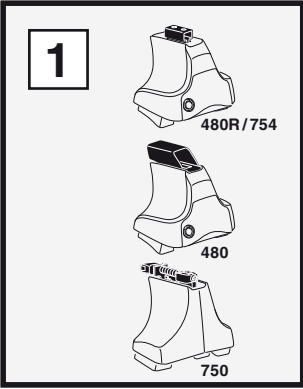
480



750



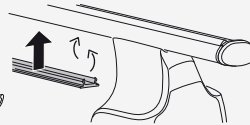
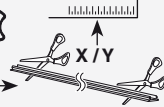
**Kit**



**3**



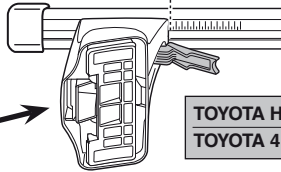
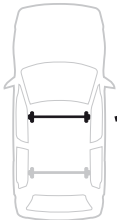
754



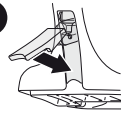
750



**1**

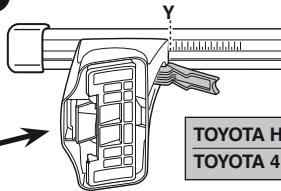


**2**

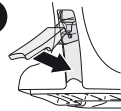


	X
TOYOTA Hilux Surf, 5-dr SUV, 02-09	49
TOYOTA 4Runner, 5-dr SUV, 02-09	49

**1**



**2**



	Y
TOYOTA Hilux Surf, 5-dr SUV, 02-09	47
TOYOTA 4Runner, 5-dr SUV, 02-09	47

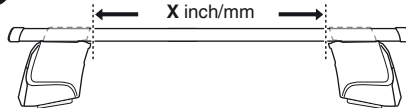


480R

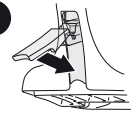


480

**1**

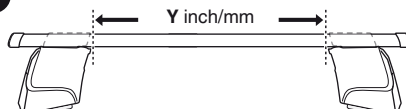


**2**

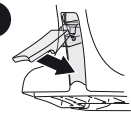


	X inch	X mm
TOYOTA Hilux Surf, 5-dr SUV, 02-09	44 <sup>7</sup> / <sub>8</sub> "	1141 mm
TOYOTA 4Runner, 5-dr SUV, 02-09	44 <sup>7</sup> / <sub>8</sub> "	1141 mm

**1**



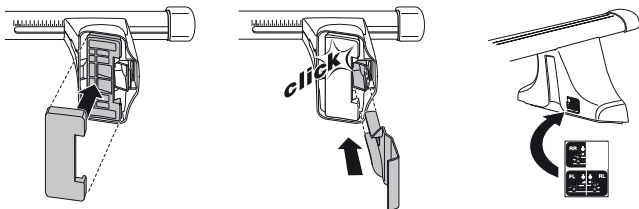
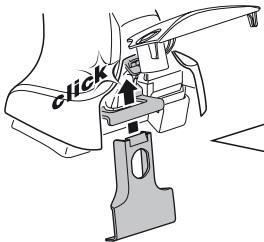
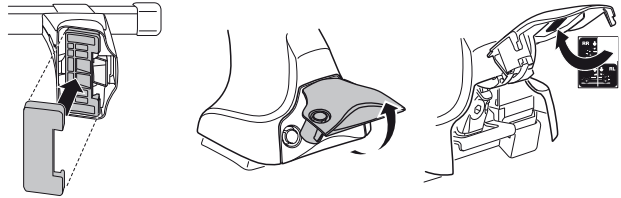
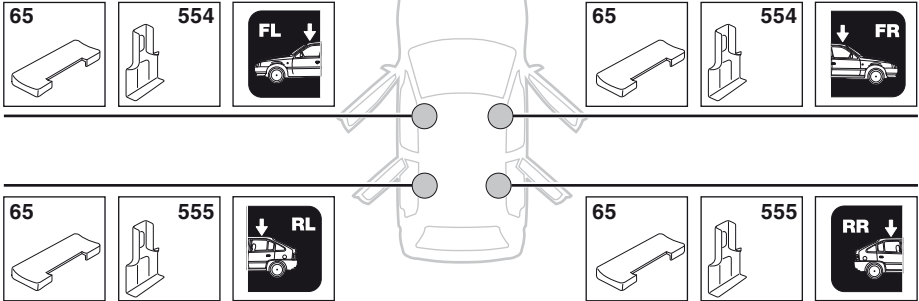
**2**



	Y inch	Y mm
TOYOTA Hilux Surf, 5-dr SUV, 02-09	44 <sup>1</sup> / <sub>8</sub> "	1121 mm
TOYOTA 4Runner, 5-dr SUV, 02-09	44 <sup>1</sup> / <sub>8</sub> "	1121 mm

4

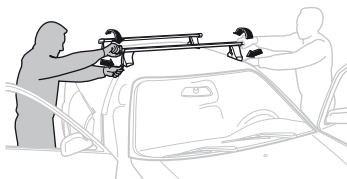
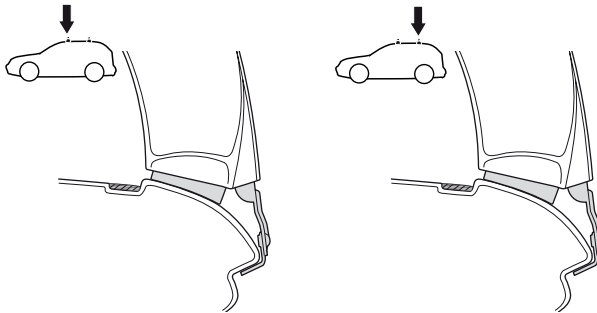
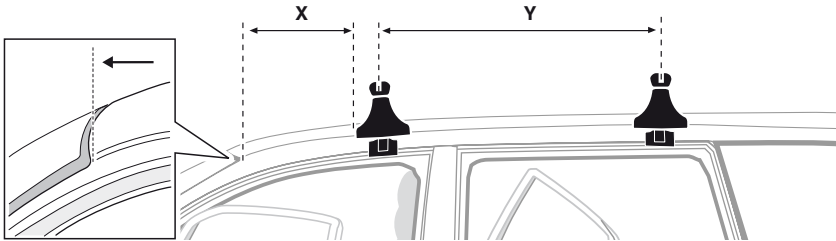
TOYOTA Hilux Surf, 5-dr SUV, 02-09  
TOYOTA 4Runner, 5-dr SUV, 02-09



5



	X mm	Y mm	X inch	Y inch
TOYOTA Hilux Surf, 5-dr SUV, 02-09	410 mm	710 mm	16 1/8"	28"
TOYOTA 4Runner, 5-dr SUV, 02-09	410 mm	710 mm	16 1/8"	28"



**GB/US** Tighten alternately

**D** Die Schrauben abwechselnd anziehen

**F** Serrer alternativement chaque côté

**NL** Afwisselend aan de linker- en de rechterkant aandraaien

**I** Alternare il serraggio delle viti

**E** Apertar alternativamente

**PT** Aperte alternadamente

**S** Dra åt växelvis

**FIN** Kierrä vuorotellen

**EST** Pinguldage vaheldumisi

**LAT** Pievelciēt pamīšus

**LIT** Užsukinėkite pakaitomis

**PL** Śruby dokręcaj naprzemiennie

**RU** Затягивайте попеременно

**CZ** Pokręťta bagażníka dokręcaj dokręcaj naprzemiennie.

**SK** Doťahujte striedavo

**SLO** Privijajte izmenično.

**HR** Naizmjenično zategnite

**HU** Egymástól függetlenül szorítandó

**GR** Σφιγγετε εναλλάξ

**TR** Dönüşümlü sıkın

**中文** 交替拧紧

**한국어** 번갈아 가며 조이십시오.

**日本語** 交互に締め付けてください。

**ไทย** ชันโนแบบสลับ

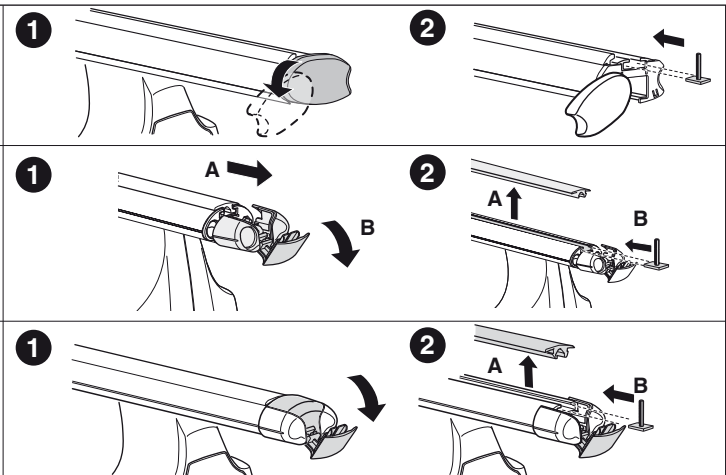
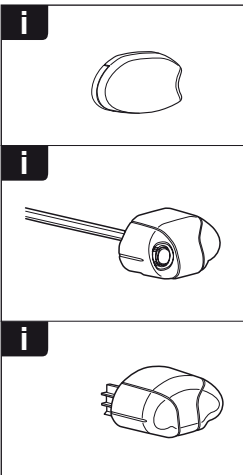
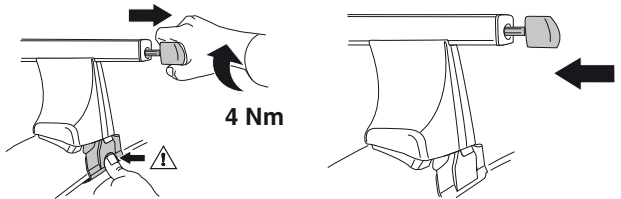
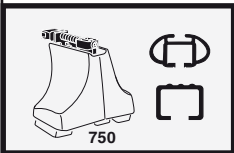
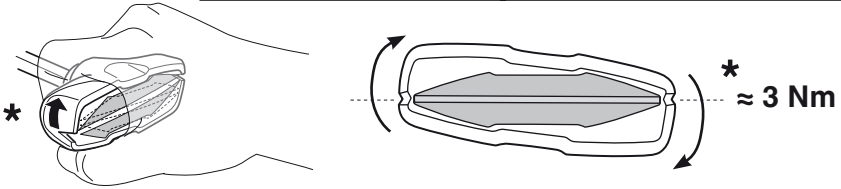
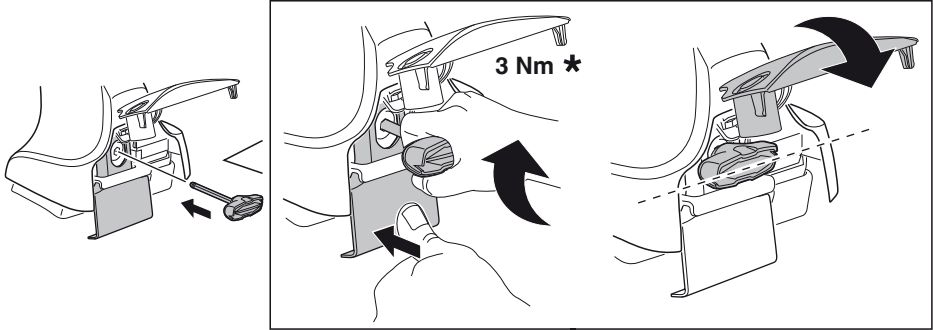
6

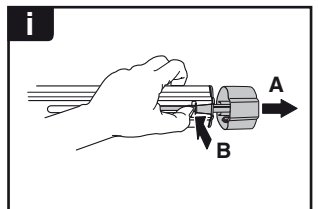
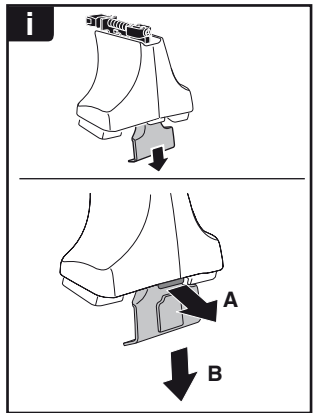
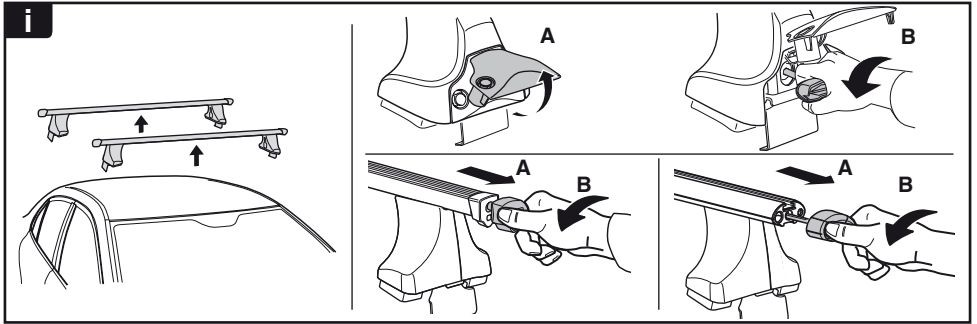


480R/754

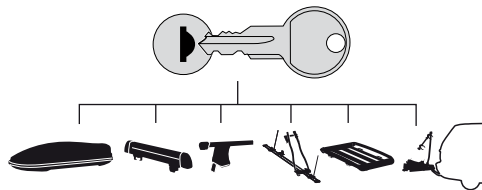


480





**THULE**  
SWEDEN  
**ONE  
KEY  
SYSTEM**



- 544 (x4)
- 596 (x6)
- 588 (x8)
- NA 510 (x10)
- EUR 452 (x12)
- ASIA



WW ▶ Thule Sweden AB, Box 69, 330 33 Hillerstorp, SWEDEN  
NA ▶ Thule Inc., 42 Silvermine Road, Seymour, Connecticut 06483, USA

info@thule.com  
customer.service@thule.com

www.thule.com