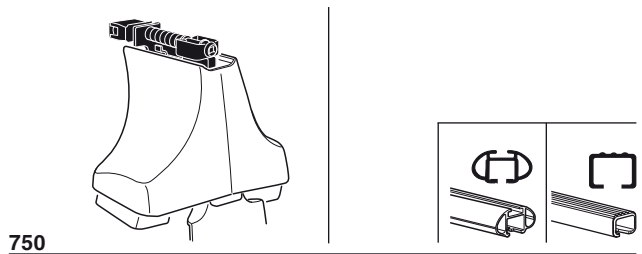
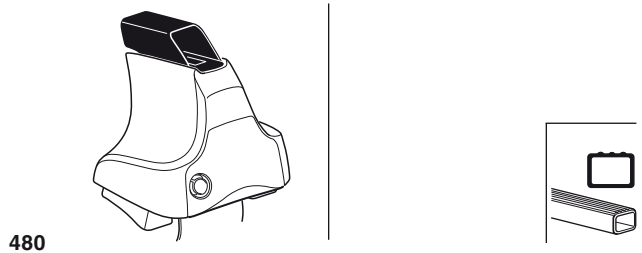
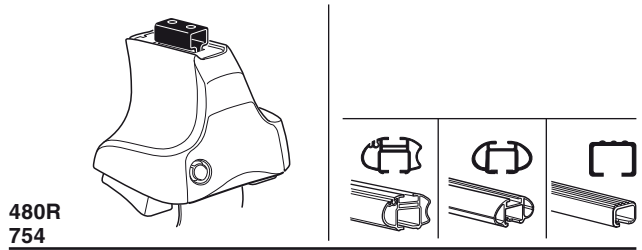


Kit 1282

NISSAN Elgrand, 5-dr MPV, 02-



x2	x2	x2	x2	x2
x2		x2	x2	
x2		x4		
x4		x4		

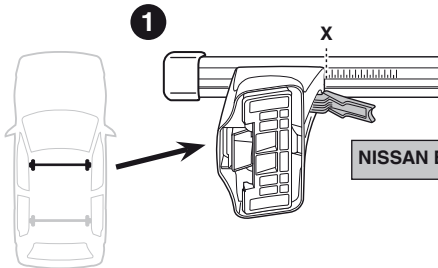
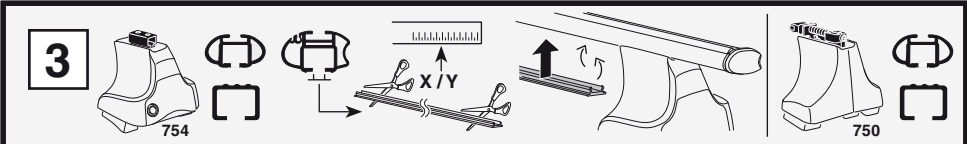
482 x 4

148 x 4

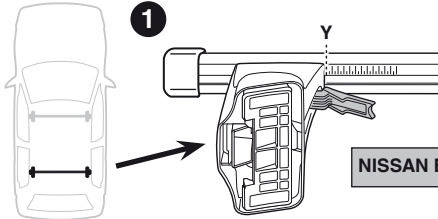
x 1

Kit

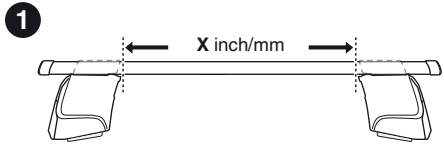
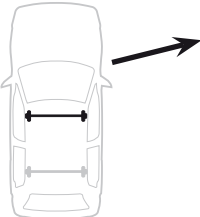
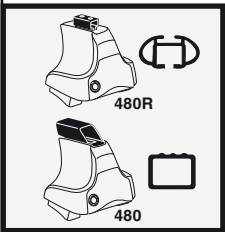




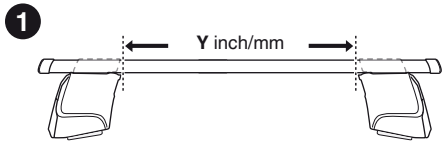
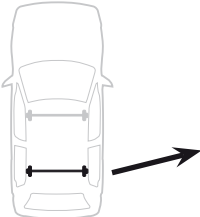
	X
NISSAN Elgrand, 5-dr MPV, 02-	42,5



	Y
NISSAN Elgrand, 5-dr MPV, 02-	42,5



	X inch	X mm
NISSAN Elgrand, 5-dr MPV, 02-	42 3/8"	1076 mm

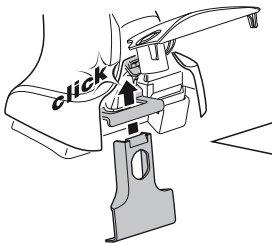
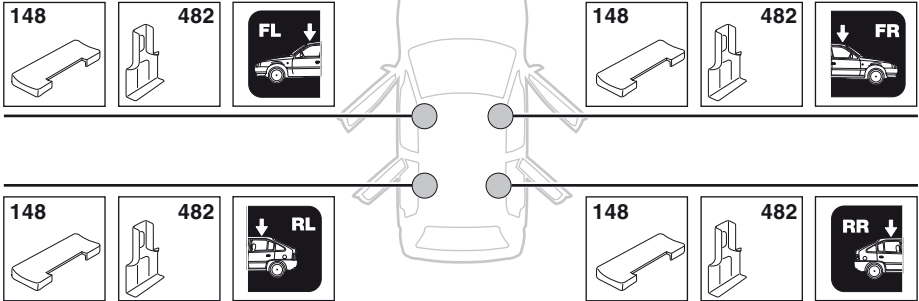


	Y inch	Y mm
NISSAN Elgrand, 5-dr MPV, 02-	42 3/8"	1076 mm



4

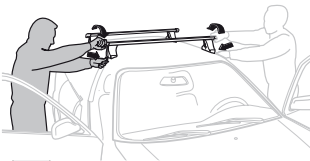
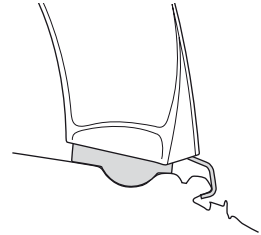
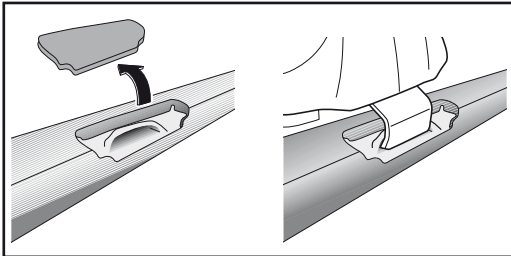
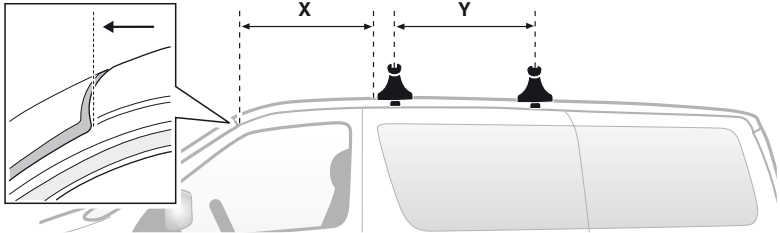
NISSAN Elgrand, 5-dr MPV, 02-



5



	X mm	Y mm	X inch	Y inch
NISSAN Elgrand, 5-dr MPV, 02-	800 mm	755 mm	31 1/2"	29 3/4"



- GB/US Tighten alternately
- D Die Schrauben abwechselnd anziehen
- F Serrer alternativement chaque côté
- NL Afwisselend aan de linker- en de rechterkant aandraaien
- I Alternare il serraggio delle viti
- E Apretar alternativamente
- PT Aperte alternadamente
- S Dra åt växelsvis
- FIN Kierrä vuorotellen
- EST Pinguldage vaheldumisi
- LAT Pievelciēt pamišus
- LIT Užsukinėkite pakaitomis
- PL Śruby dokręcaj naprzemiennie
- RU Затягивайте попеременно

- CZ Pokrýtla bagažníka dokręcaj dokręcaj naprzemiennie.
- SK Dofahajte striedavo
- SLO Privijajte izmenično.
- HR Naizmjenično zategnite
- HU Egymástól függetlenül szorítandó
- GR Σφίγγετε εναλλάξ
- TR Dönüşümlü sıkın
- 中文 交替拧紧
- 한국어 번갈아 가며 조이십시오.
- 日本語 交互に締め付けてください。
- ไทย ขึ้นในแบบสลับ

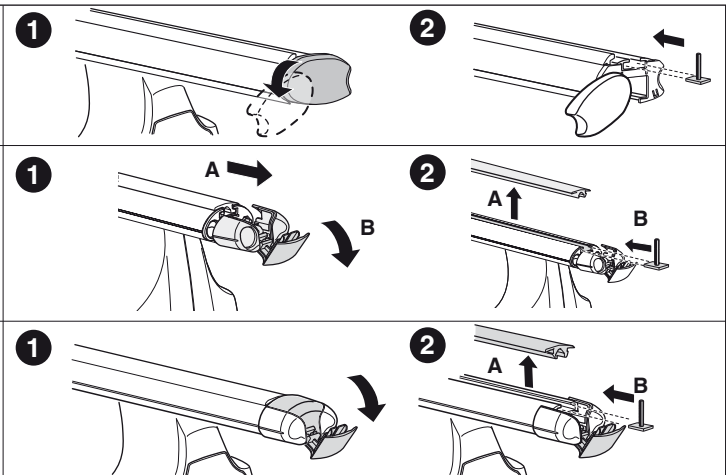
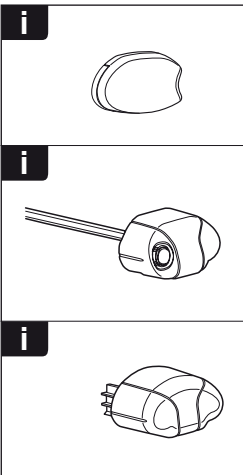
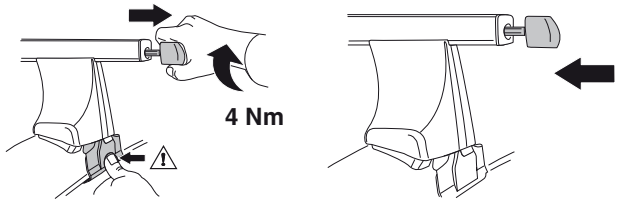
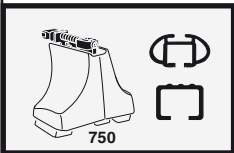
6

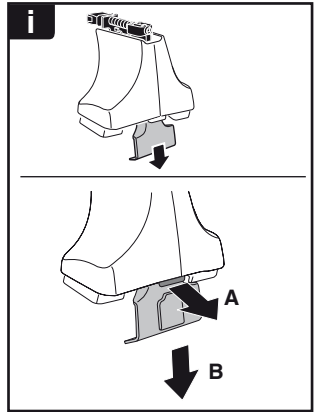
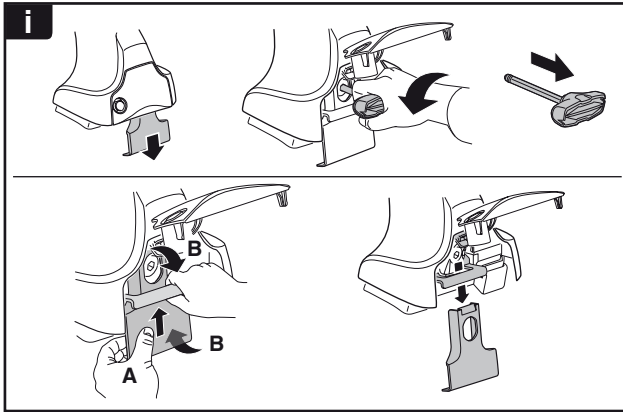


480R/754



480





THULE
SWEDEN
**ONE
KEY
SYSTEM**



		(x4)
		(x6)
		(x8)
NA		(x10)
EUR		(x12)
ASIA		(x12)



WW ▶ Thule Sweden AB, Box 69, 330 33 Hillerstorp, SWEDEN
NA ▶ Thule Inc., 42 Silvermine Road, Seymour, Connecticut 06483, USA

info@thule.com
customer.service@thule.com

www.thule.com