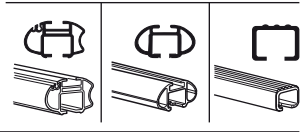
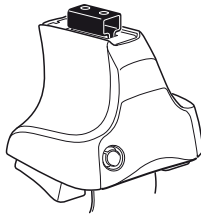


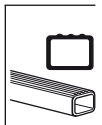
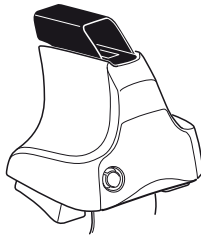
# Kit 1270

CITROËN C3, 5-dr Hatchback, 02-

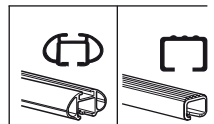
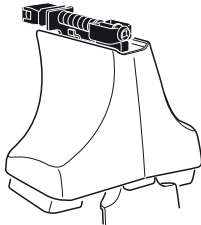
480R  
754



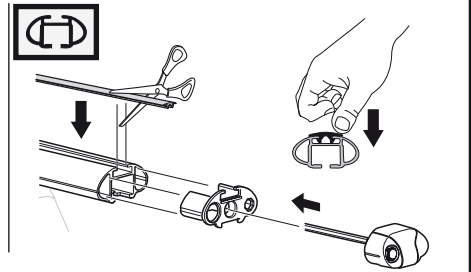
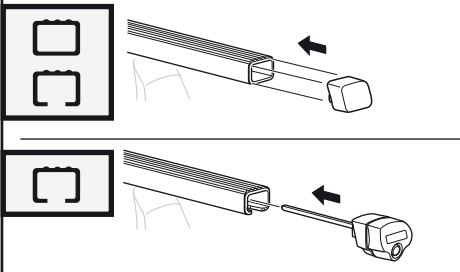
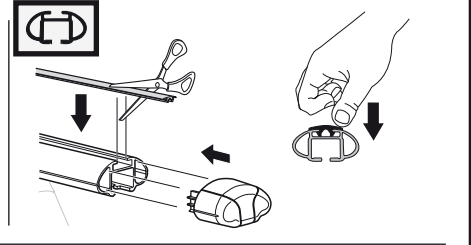
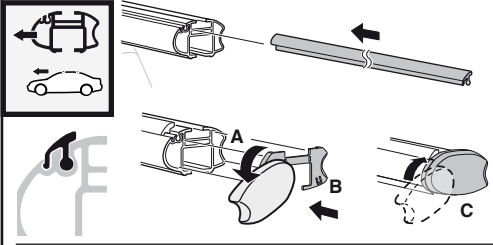
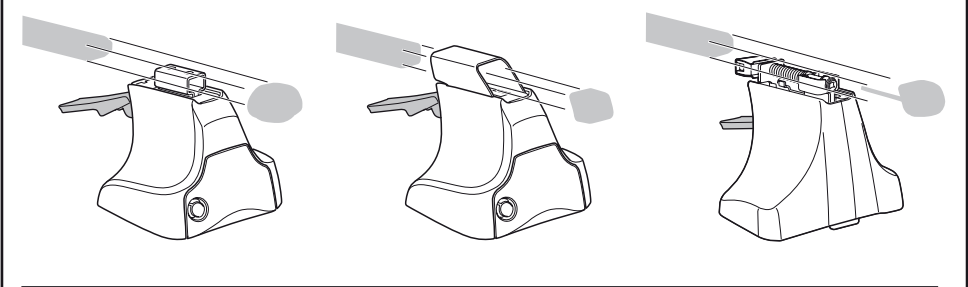
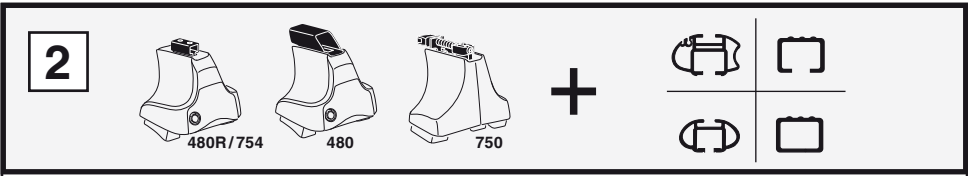
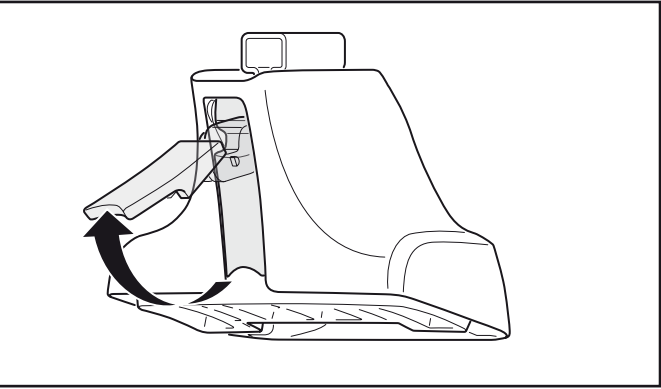
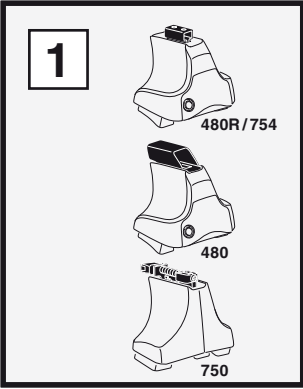
480



750



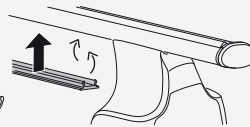
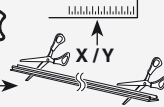




**3**



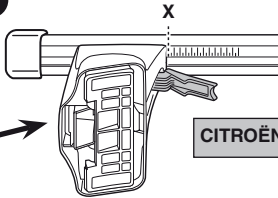
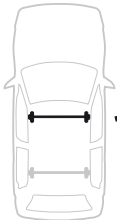
754



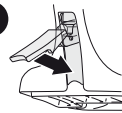
750



**1**



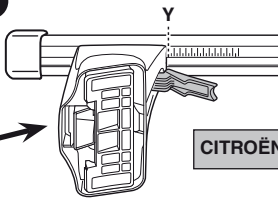
**2**



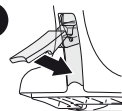
**CITROËN C3, 5-dr Hatchback, 02-**

<b>X</b>
<b>33,5</b>

**1**



**2**



**CITROËN C3, 5-dr Hatchback, 02-**

<b>Y</b>
<b>29,5</b>

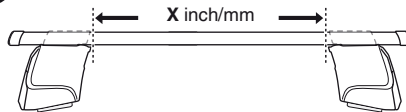


480R

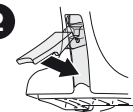


480

**1**



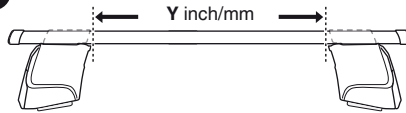
**2**



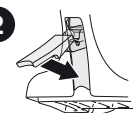
**CITROËN C3, 5-dr Hatchback, 02-**

<b>X inch</b>	<b>X mm</b>
<b>38 7/8"</b>	<b>986 mm</b>

**1**



**2**

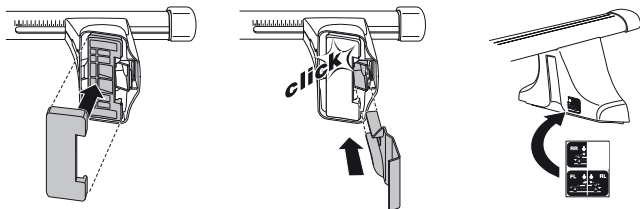
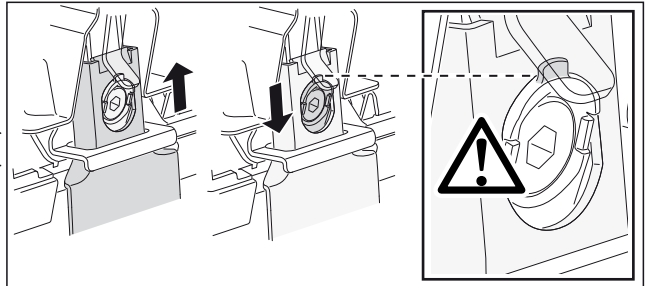
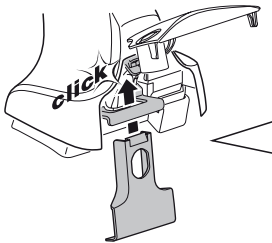
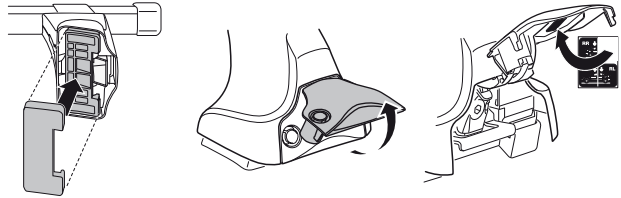
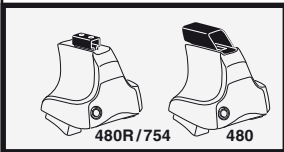
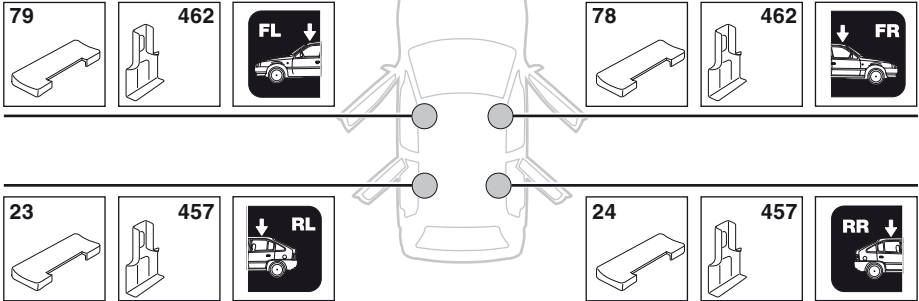


**CITROËN C3, 5-dr Hatchback, 02-**

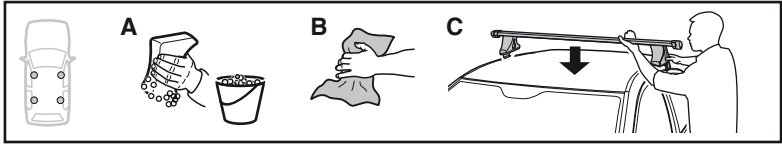
<b>Y inch</b>	<b>Y mm</b>
<b>37 1/4"</b>	<b>946 mm</b>

4

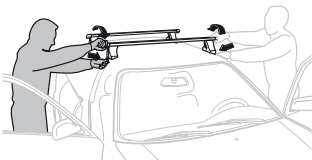
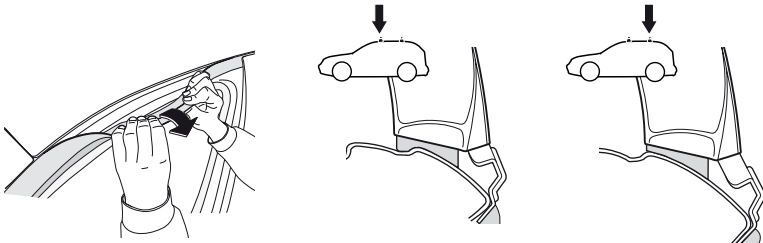
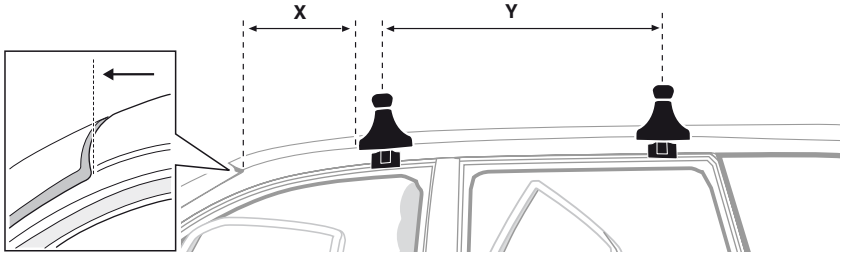
CITROËN C3, 5-dr Hatchback, 02-



5



	X mm	Y mm	X inch	Y inch
CITROËN C3, 5-dr Hatchback, 02-	280 mm	650 mm	11"	25 5/8"



- GB/US** Tighten alternately  
**D** Die Schrauben abwechselnd anziehen  
**F** Serrer alternativement chaque côté  
**NL** Afwisselend aan de linker- en de rechterkant aandraaien  
**I** Alternare il serraggio delle viti  
**E** Apretar alternativamente  
**PT** Aperte alternadamente  
**S** Dra åt växelvis  
**FIN** Kierrä vuorotellen  
**EST** Pinguldage vaheldumisi  
**LAT** Pievelciet pamišus  
**LIT** Užsukinkite pakaitomis  
**PL** Śruby dokręcaj naprzemiennie  
**RU** Затягивайте попеременно

- CZ** Pokręťta багаžníka dokręcaj naprzemiennie.  
**SK** Dofahujte striedavo  
**SLO** Privijajte izmenično.  
**HR** Naizmjenično zategnite  
**HU** Egymástól függetlenül szorítandó  
**GR** Σφιγγετε εναλλάξ  
**TR** Dönüşümlü sıkın

**中文** 交替拧紧

**한국어** 번갈아 가며 조이십시오.

**日本語** 交互に締め付けてください。

**ไทย** ชั้้นในแบบสลับ

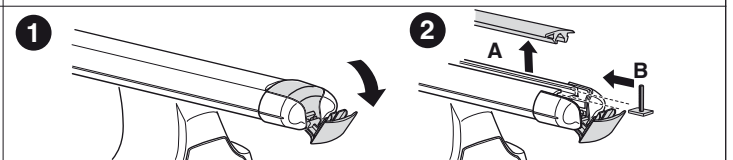
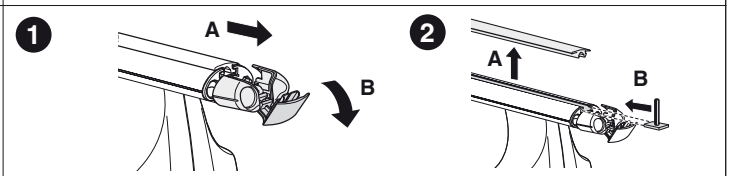
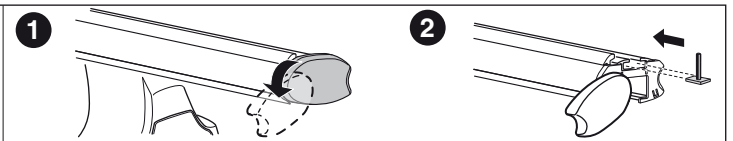
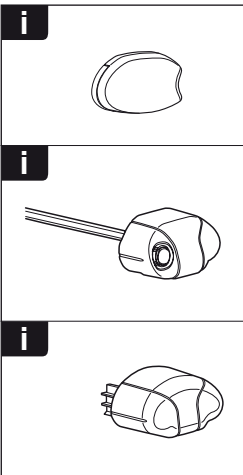
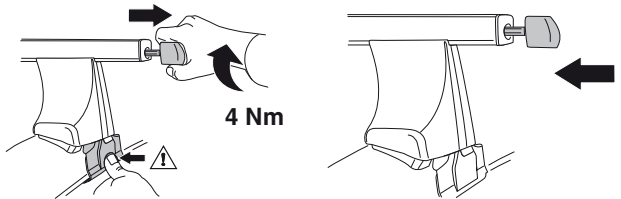
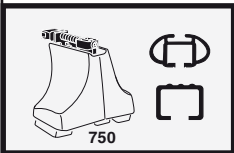
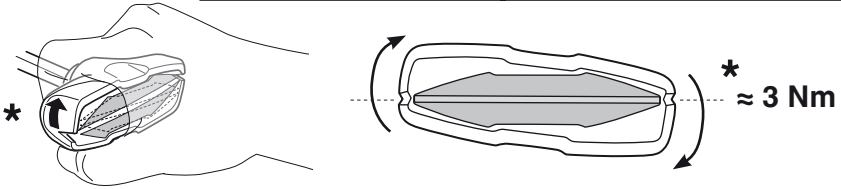
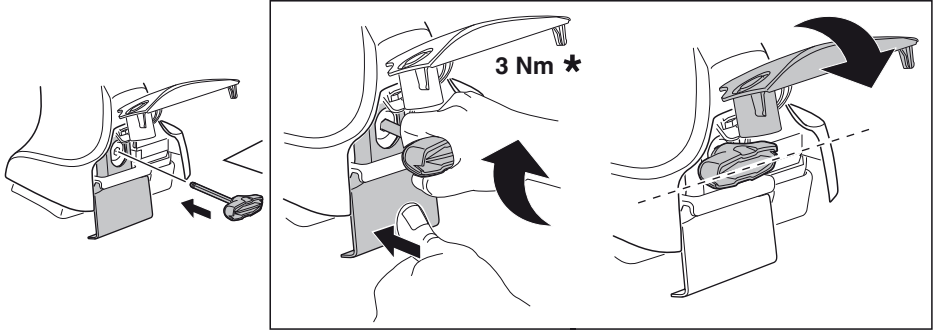
6

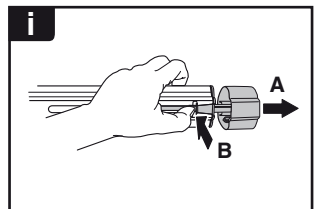
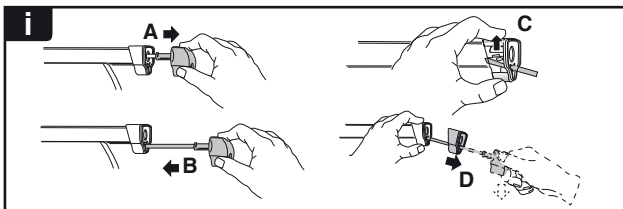
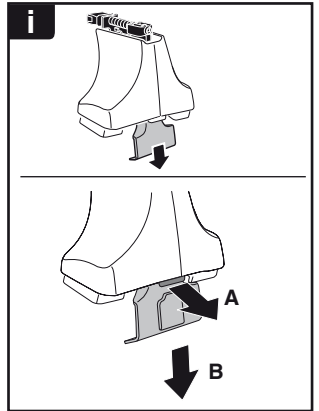
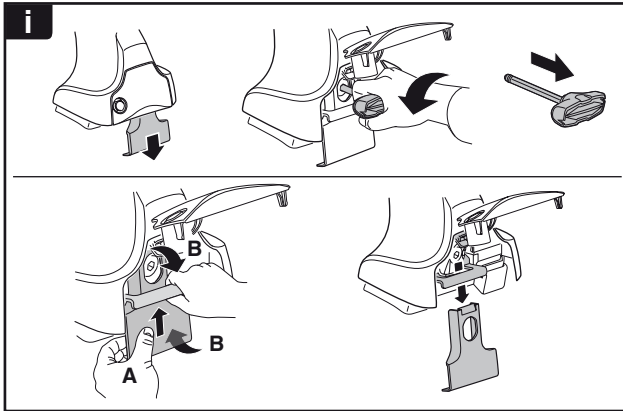
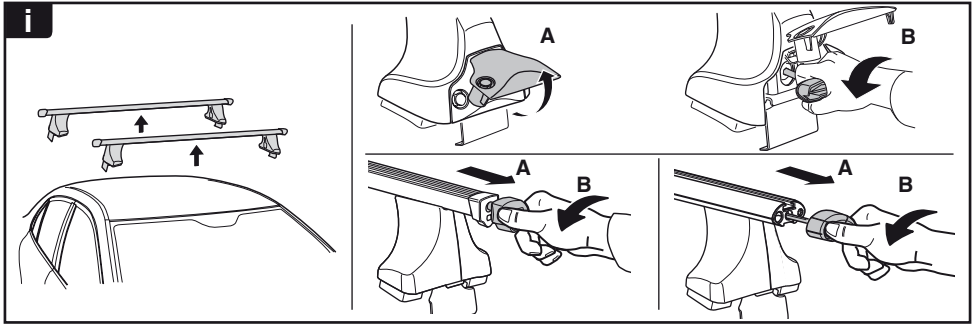


480R/754

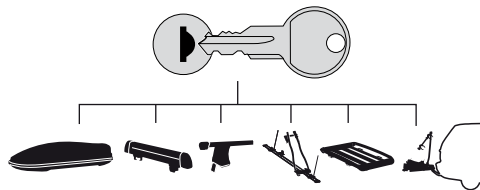


480

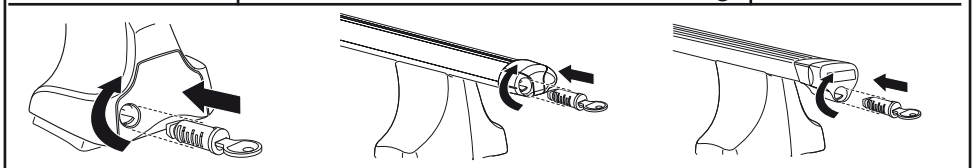




**THULE**  
SWEDEN  
**ONE  
KEY  
SYSTEM**



		(x4)
		(x6)
		(x8)
NA		(x10)
EUR		(x12)
ASIA		(x12)



WW ▶ Thule Sweden AB, Box 69, 330 33 Hillerstorp, SWEDEN  
NA ▶ Thule Inc., 42 Silvermine Road, Seymour, Connecticut 06483, USA

info@thule.com  
customer.service@thule.com

www.thule.com