

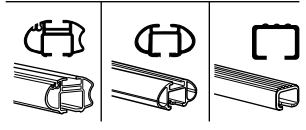
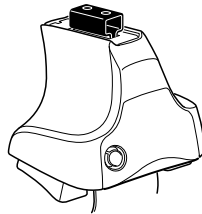
Kit 1245

TOYOTA Corolla, 4-dr Sedan, 02-06 / *03-08

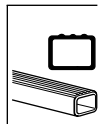
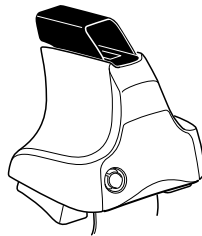
TOYOTA Corolla Altis, 4-dr Sedan, 01-06 (Asia)

*North America

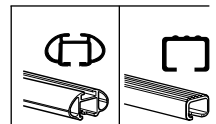
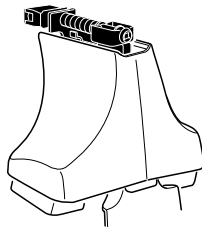
480R
754



480



750



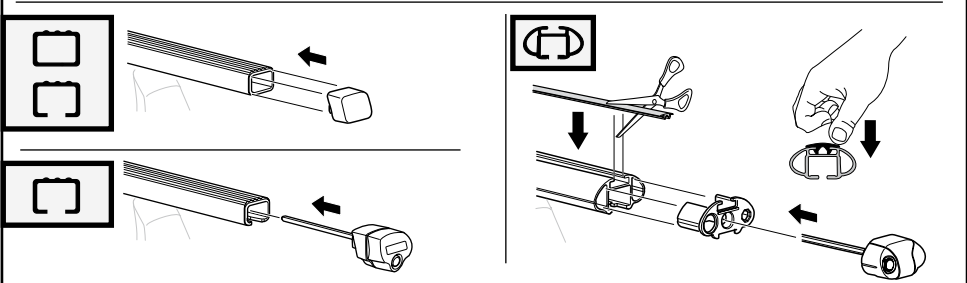
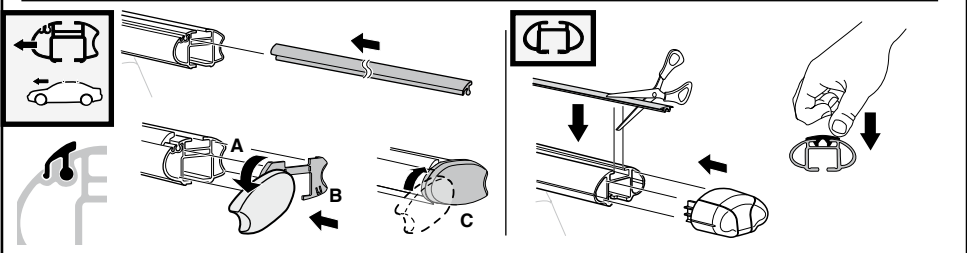
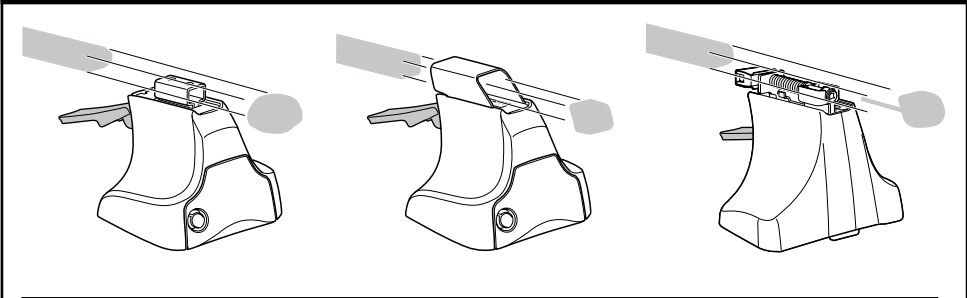
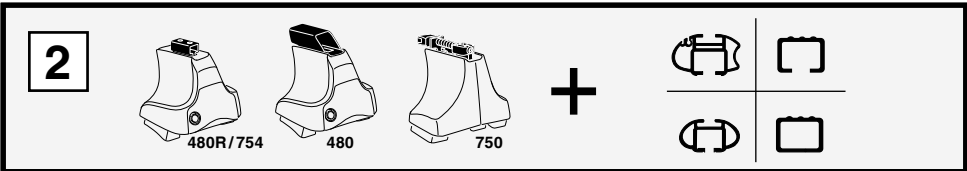
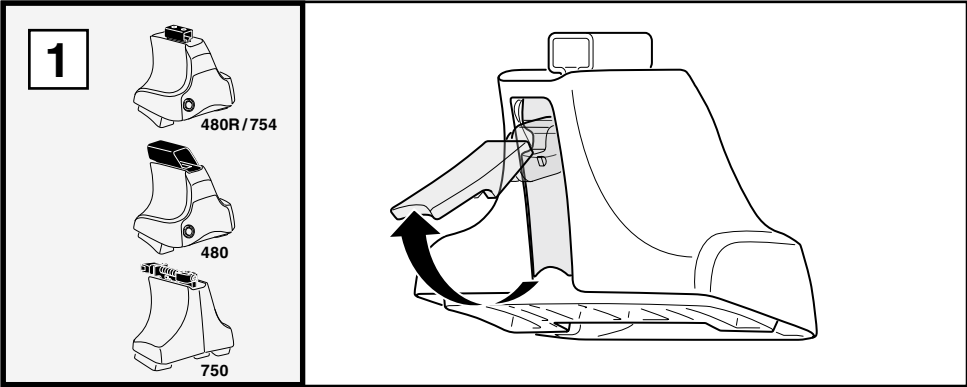
x2 x2 x2 x4	x2	x2 x2 x4 x4	x2 x2	x2	x2

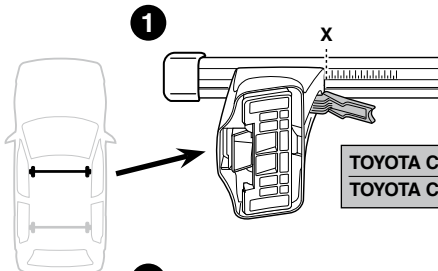
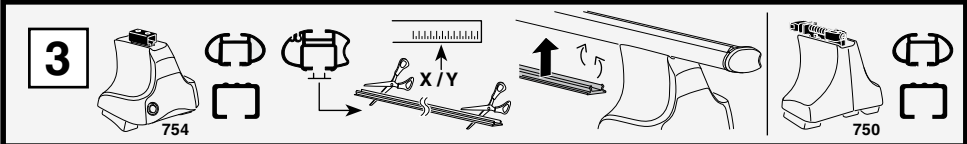
438 x 4

46 x 4

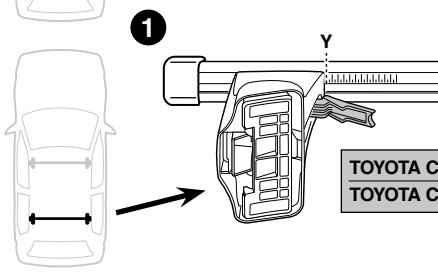
x 1

Kit

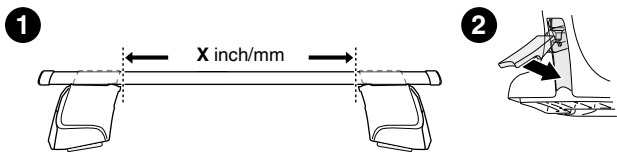
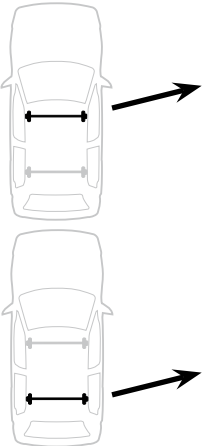
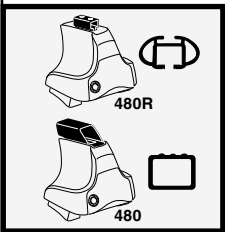




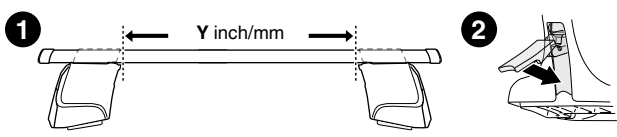
	X
TOYOTA Corolla, 4-dr Sedan, 02-06 / *03-08	30,5
TOYOTA Corolla Altis, 4-dr Sedan, 01-06 (Asia)	30,5



	Y
TOYOTA Corolla, 4-dr Sedan, 02-06 / *03-08	32,5
TOYOTA Corolla Altis, 4-dr Sedan, 01-06 (Asia)	32,5



	X inch	X mm
TOYOTA Corolla, 4-dr Sedan, 02-06 / *03-08	37 ⁵ / ₈ "	956 mm
TOYOTA Corolla Altis, 4-dr Sedan, 01-06 (Asia)	37 ⁵ / ₈ "	956 mm

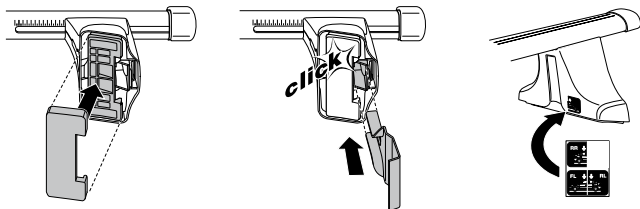
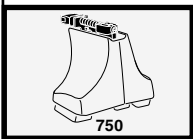
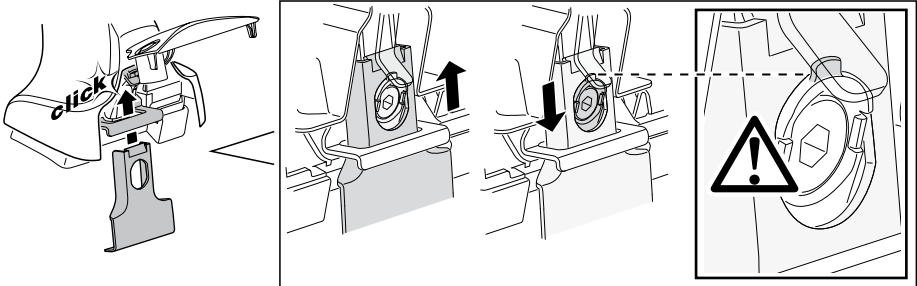
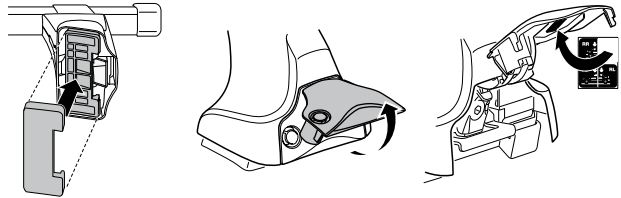
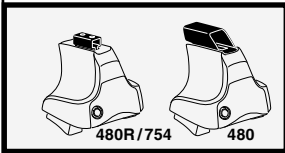
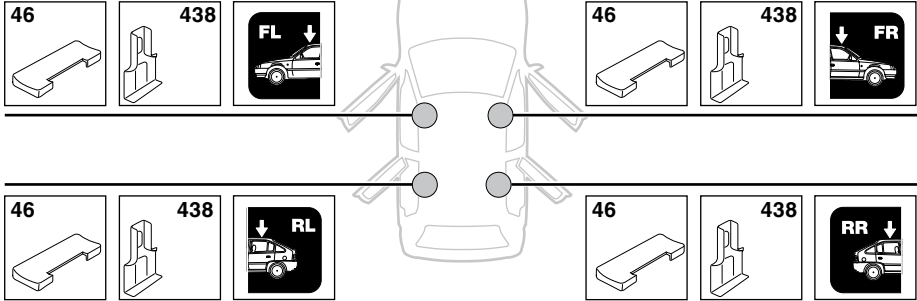


	Y inch	Y mm
TOYOTA Corolla, 4-dr Sedan, 02-06 / *03-08	38 ³ / ₈ "	976 mm
TOYOTA Corolla Altis, 4-dr Sedan, 01-06 (Asia)	38 ³ / ₈ "	976 mm

4

TOYOTA Corolla, 4-dr Sedan, 02-06 / *03-08

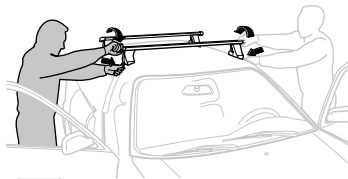
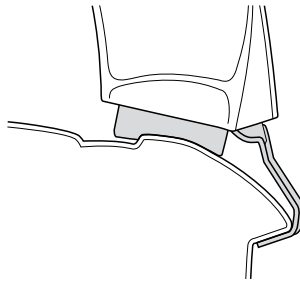
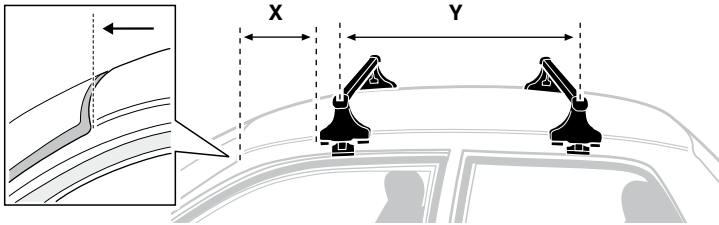
TOYOTA Corolla Altis, 4-dr Sedan, 01-06 (Asia)



5



	X mm	Y mm	X inch	Y inch
TOYOTA Corolla, 4-dr Sedan, 02-06 / *03-08	300 mm	550 mm	11 3/4"	21 5/8"
TOYOTA Corolla Altis, 4-dr Sedan, 01-06 (Asia)	300 mm	550 mm	11 3/4"	21 5/8"



GB/US Tighten alternately

D Die Schrauben abwechselnd anziehen

F Serrer alternativement chaque côté

NL Afwisselend aan de linker- en de rechterkant aandraaien

I Alternare il serraggio delle viti

E Serrare alternativamente

PT Aperte alternadamente

S Dra åt växelsvis

FIN Kierrä vuorotellen

EST Pinguldage vaheldumisi

LAT Pielieciet pamišus

LIT Užsukinėkite pakaitomis

PL Śruby dokręcaj naprzemiennie

RU Затягивайте попеременно

CZ Pokręťta bagażníka dokręcaj dokręcaj naprzemiennie.

SK Doťahujte striedavo

SLO Privijajte izmenično.

HR Naizmjenično zategnite

HU Egymástól függetlenül szorítandó

GR Σφιγγετε εναλλάξ

TR Dönüşümlü sıkın

中文 交替拧紧

한국어 번갈아 가며 조이십시오.

日本語 交互に締め付けてください。

ไทย ชั้้นในแบบสลับ

6



480R/754



480



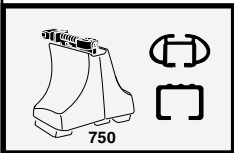
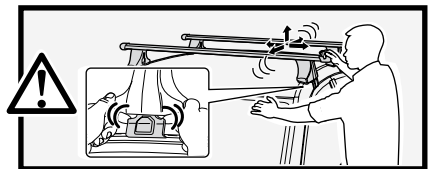
*
3 Nm



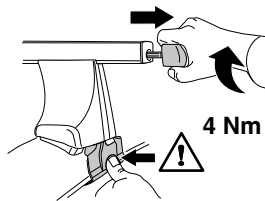
*



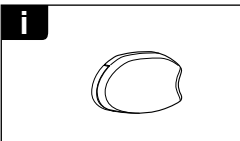
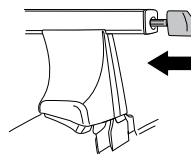
*
≈ 3 Nm



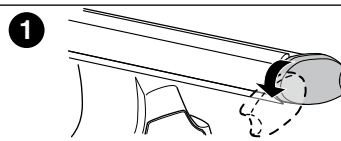
750



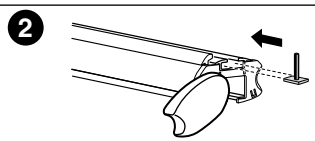
4 Nm



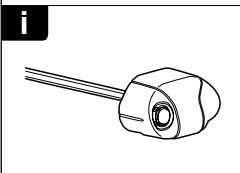
i



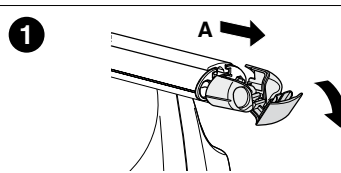
1



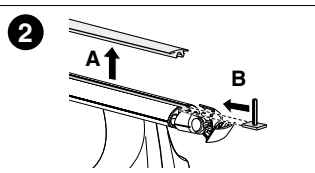
2



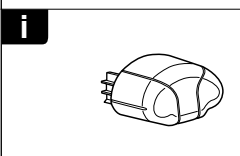
i



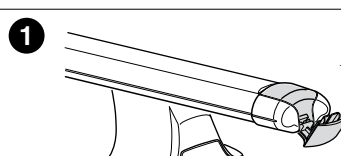
1



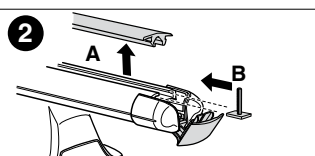
2



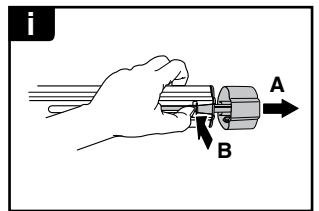
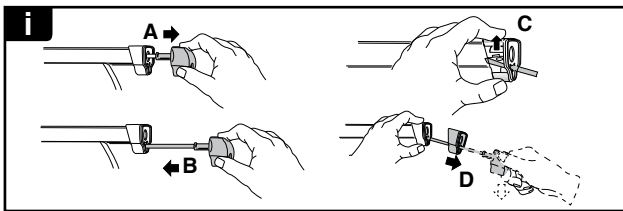
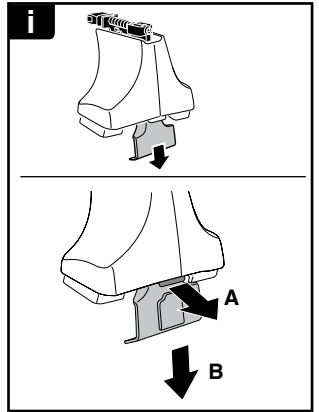
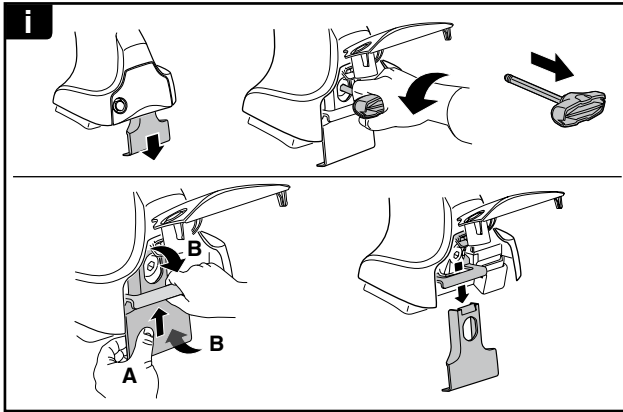
i



1



2



THULE
SWEDEN
**ONE
KEY
SYSTEM**



		(x4)
		(x6)
		(x8)
NA		(x10)
EUR		(x12)
ASIA		(x12)



WW ▶ Thule Sweden AB, Box 69, 330 33 Hillerstorp, SWEDEN
NA ▶ Thule Inc., 42 Silvermine Road, Seymour, Connecticut 06483, USA

info@thule.com
customer.service@thule.com

www.thule.com

503-1245-02