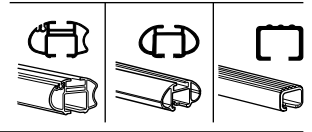
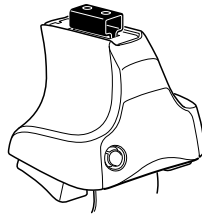


# Kit 1224

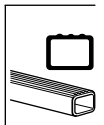
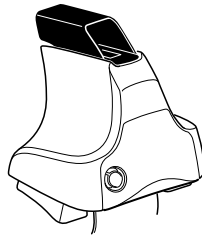
TOYOTA Camry, 4-dr Sedan, \*92-96

\*North America

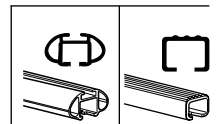
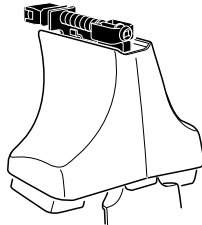
480R  
754



480

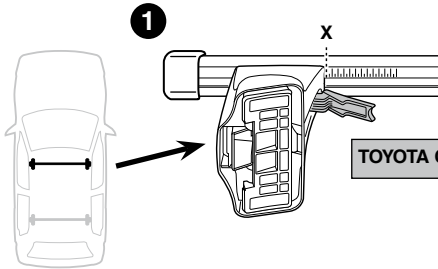


750

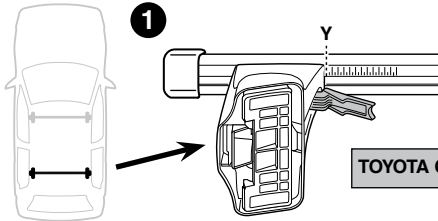
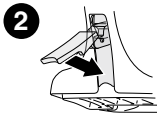


**Kit**

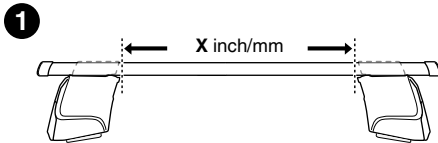
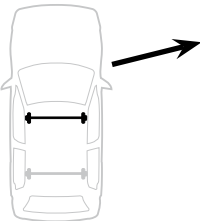
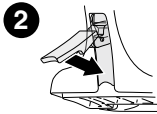




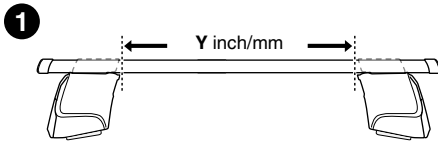
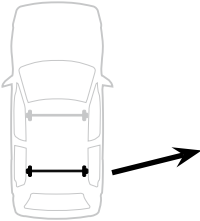
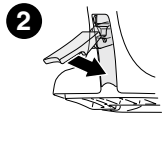
	X
TOYOTA Camry, 4-dr Sedan, *92-96	31,5



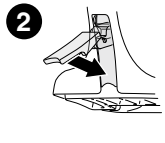
	Y
TOYOTA Camry, 4-dr Sedan, *92-96	30,5



	X inch	X mm
TOYOTA Camry, 4-dr Sedan, *92-96	38 "	966 mm

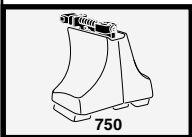
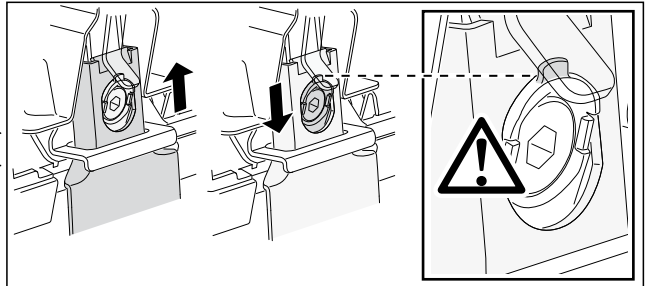
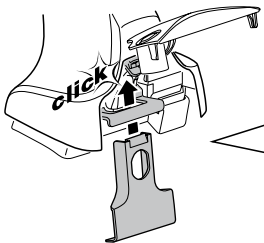
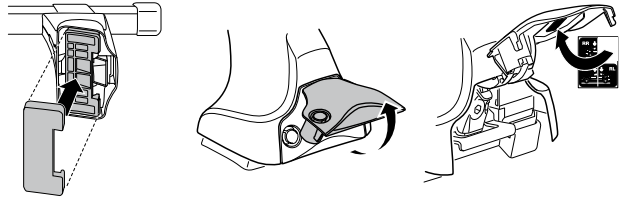
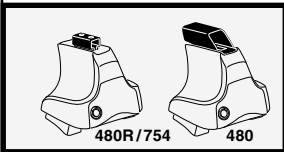
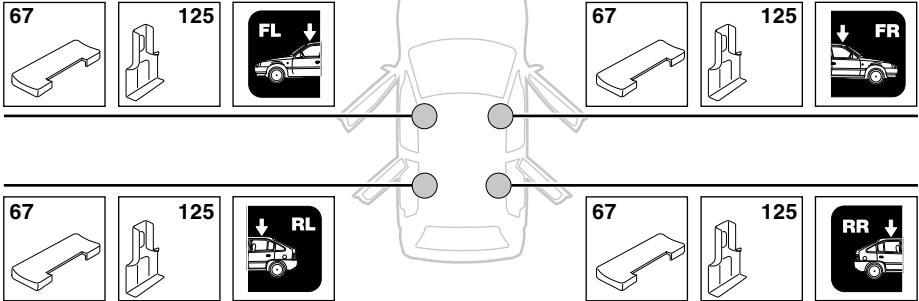


	Y inch	Y mm
TOYOTA Camry, 4-dr Sedan, *92-96	37 5/8 "	956 mm



4

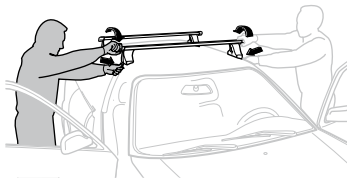
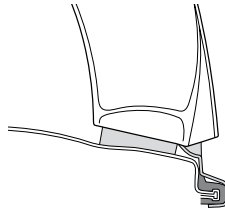
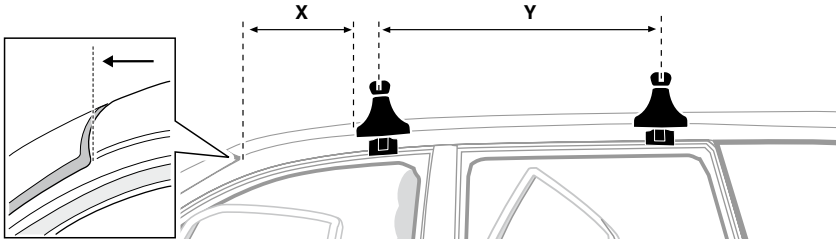
TOYOTA Camry, 4-dr Sedan, \*92-96



5



	X mm	Y mm	X inch	Y inch
<b>TOYOTA Camry, 4-dr Sedan, *92-96</b>	<b>190 mm</b>	<b>710 mm</b>	<b>7 1/2"</b>	<b>28"</b>



**GB/US** Tighten alternately

**D** Die Schrauben abwechselnd anziehen

**F** Serrer alternativement chaque côté

**NL** Afwisselend aan de linker- en de rechterkant aandraaien

**I** Alternare il serraggio delle viti

**E** Apertar alternativamente

**PT** Aperte alternadamente

**S** Dra åt växelvis

**FIN** Kierrä vuorotellen

**EST** Pinguldage vaheldumisi

**LAT** Pielvecliet pamišus

**LIT** Užsukinėkite pakaitomis

**PL** Śruby dokręcaj naprzemiennie

**RU** Затягивайте попеременно

**CZ** Pokręťta bagażníka dokręcaj dokręcaj naprzemiennie.

**SK** Doťahujte striedavo

**SLO** Privijajte izmenično.

**HR** Naizmjenično zategnite

**HU** Egymástól függetlenül szorítandó

**GR** Σφιγγετε εναλλάξ

**TR** Dönüşümlü sıkın

**中文** 交替拧紧

**한국어** 번갈아 가며 조이십시오.

**日本語** 交互に締め付けてください。

**ไทย** ชันในแบบสลับ

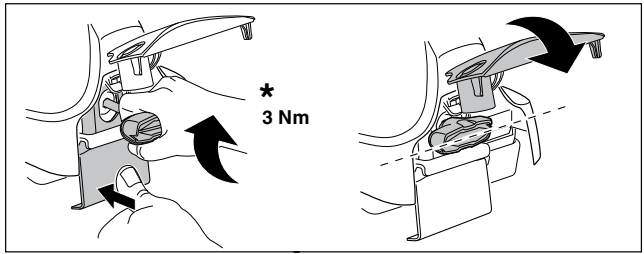
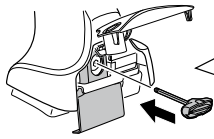
6



480R/754



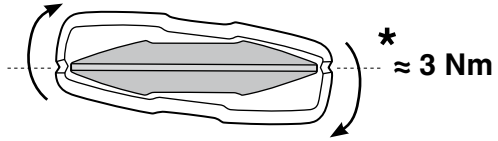
480



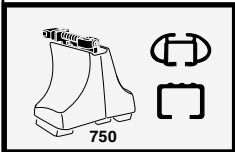
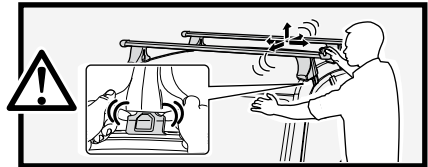
\*  
3 Nm



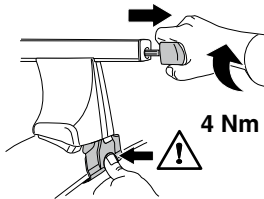
\*



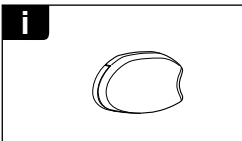
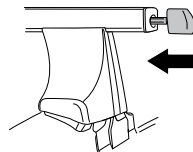
\*  
≈ 3 Nm



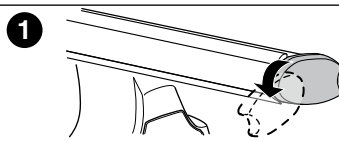
750



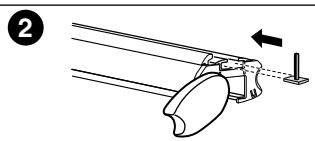
4 Nm



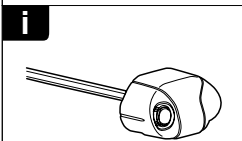
i



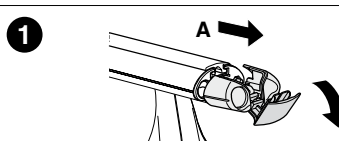
1



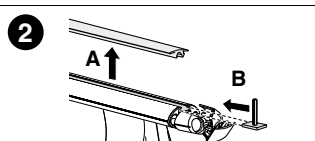
2



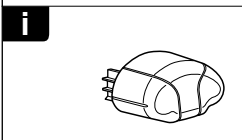
i



1



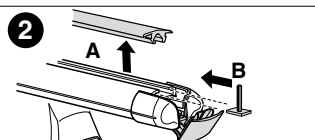
2



i



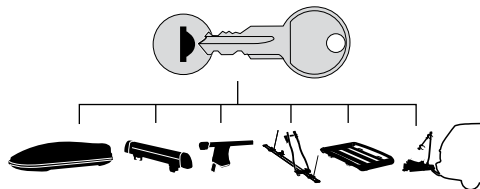
1



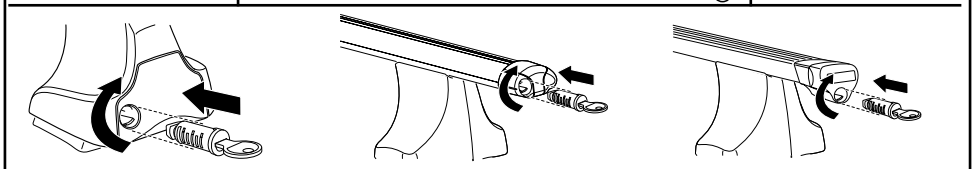
2



**THULE**  
SWEDEN  
**ONE  
KEY  
SYSTEM**



		544	(x4)
		596	(x6)
		588	(x8)
NA		510	(x10)
EUR		452	(x12)
ASIA			



ww ▶ Thule Sweden AB, Box 69, 330 33 Hillerstorp, SWEDEN  
NA ▶ Thule Inc., 42 Silvermine Road, Seymour, Connecticut 06483, USA

info@thule.com  
customer.service@thule.com

www.thule.com

503-1224-02