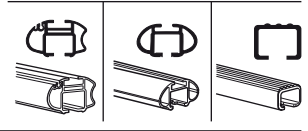
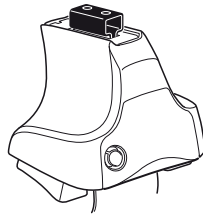


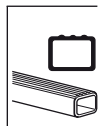
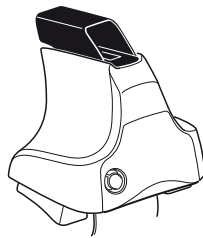
Kit 1179

NISSAN Serena, 5-dr MPV, 99-05

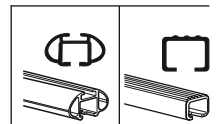
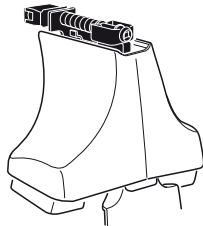
480R
754



480



750



Max. 50kg
Max. 110 lbs

80 km/h
50 Mph
130 km/h
80 Mph
40 km/h
25 Mph
km/h
Mph

THULE
Kit XXXX
instructions
THULE

480R/754
x1 x4 x4 x4

480
x1 x4 x4 x4

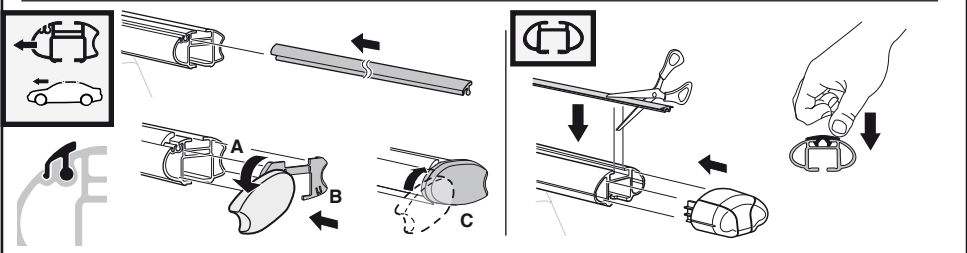
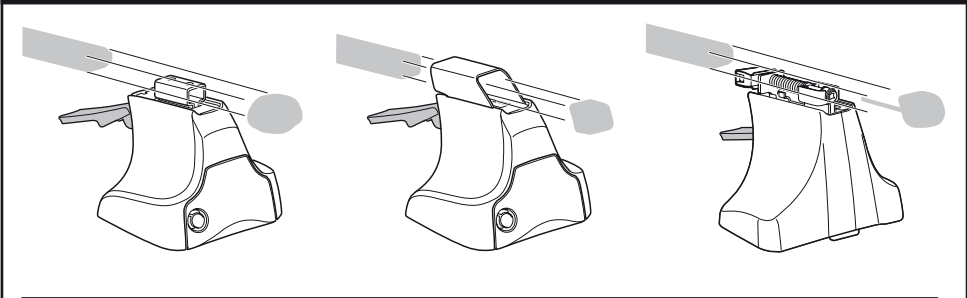
750
x1 x4 x4 x4

x2 x2 x2 x4 x2 x2 x2 x2 x2

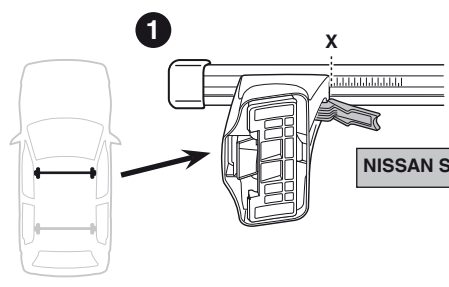
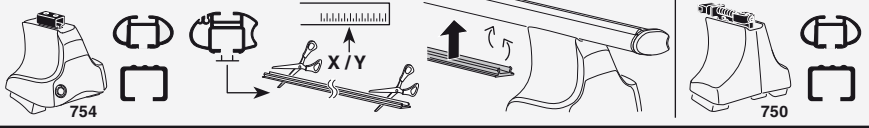
315 x4
06 x4
x4
x4
x1

RR ↓ ↓ FR
FL ↓ ↓ RL

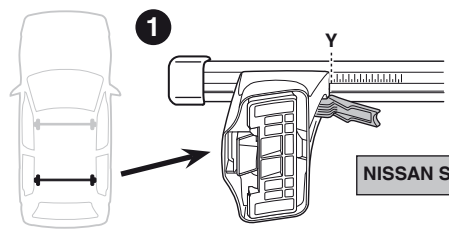
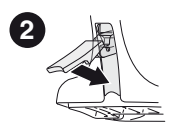
Kit



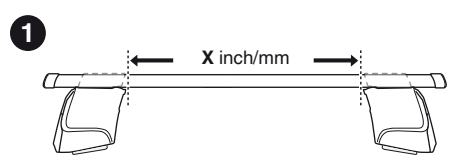
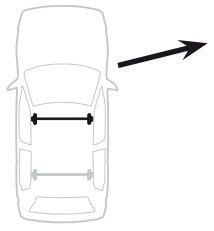
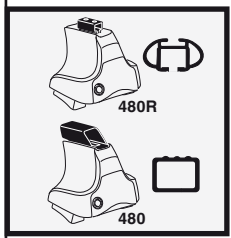
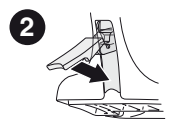
3



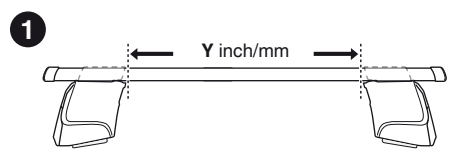
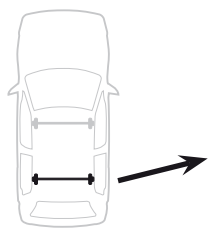
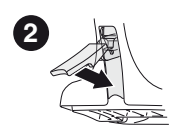
NISSAN Serena, 5-dr MPV, 99-05	X
	35



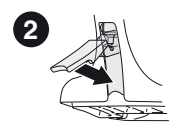
NISSAN Serena, 5-dr MPV, 99-05	Y
	35



NISSAN Serena, 5-dr MPV, 99-05	X inch	X mm
	39 3/8"	1001 mm

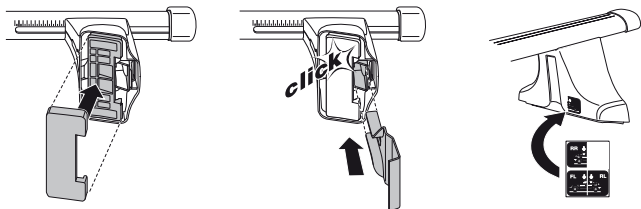
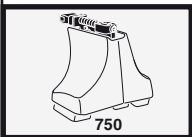
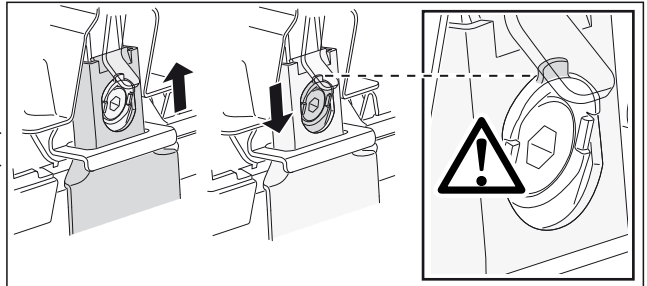
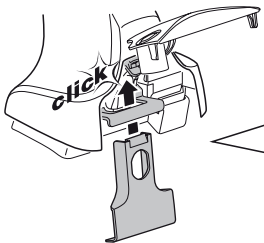
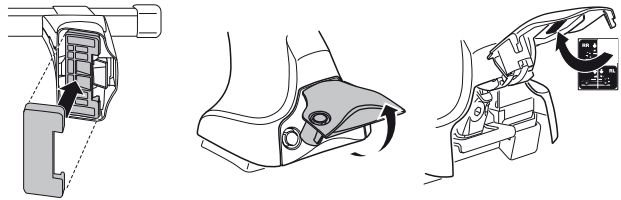
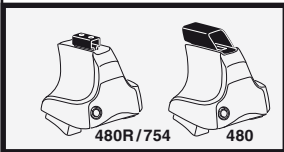
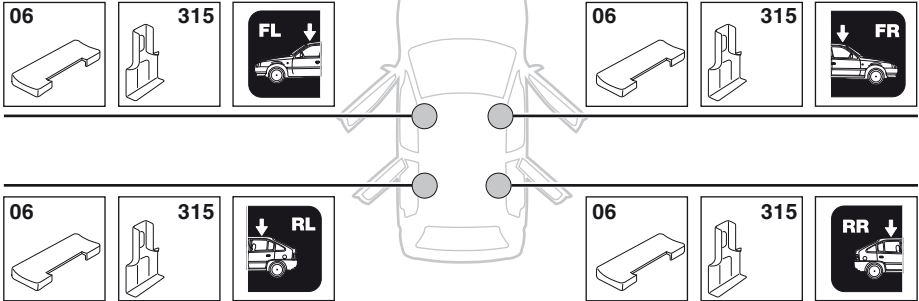


NISSAN Serena, 5-dr MPV, 99-05	Y inch	Y mm
	39 3/8"	1001 mm

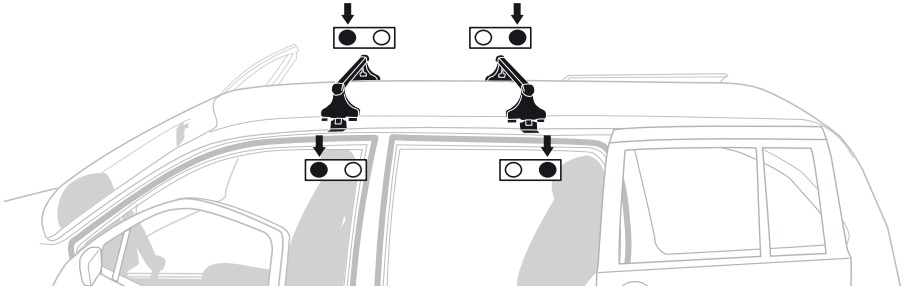
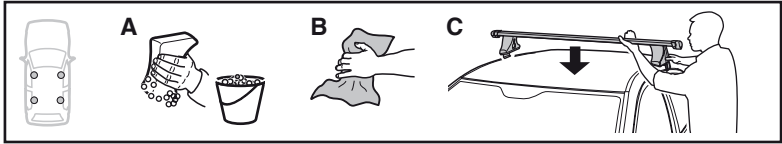


4

NISSAN Serena, 5-dr MPV, 99-05



5



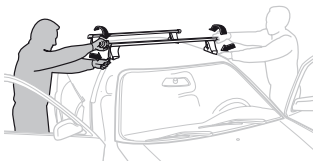
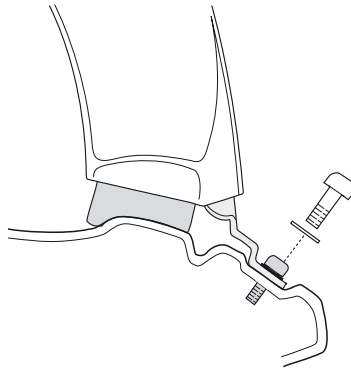
x 4



x 4



x 1



- GB/US** Tighten alternately
D Die Schrauben abwechselnd anziehen
F Serrer alternativement chaque côté
NL Afwisselend aan de linker- en de rechterkant aandraaien
I Alternare il serraggio delle viti
E Apretar alternativamente
PT Aperte alternadamente
S Dra åt växelvis
FIN Kierrä vuorotellen
EST Pinguldage vaheldumisi
LAT Pievelciēt pamišus
LIT Užsukinėkite pakaitomis
PL Śruby dokręcaj naprzemiennie
RU Затягивайте попеременно

- CZ** Pokrétla bagażnika dokręcaj dokręcaj naprzemiennie.
SK Dotahujte striedavo
SLO Privijajte izmenično.
HR Naizmjenično zategnite
HU Egyarástól függetlenül szorítandó
GR Σφιγγετε εναλλάξ
TR Dönüşümlü sıkın

中文 交替拧紧

한국어 번갈아 가며 조이십시오.

日本語 交互に締め付けてください。

ไทย ขึ้นในแบบสลับ

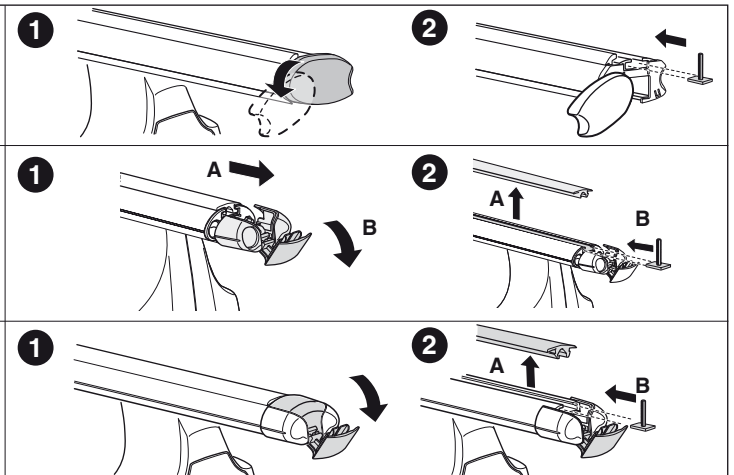
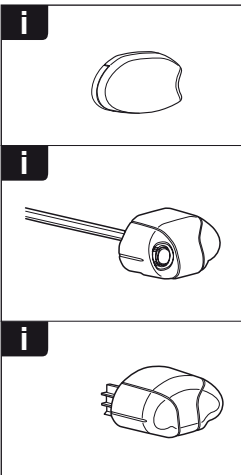
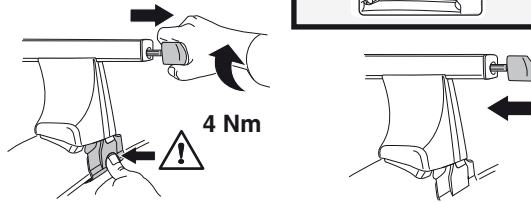
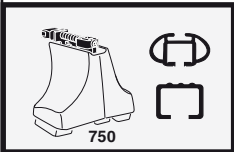
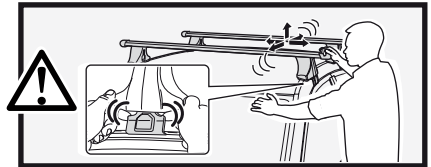
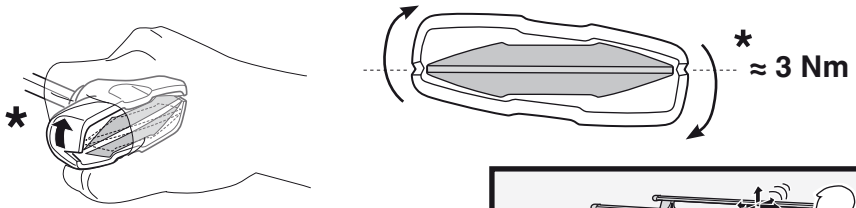
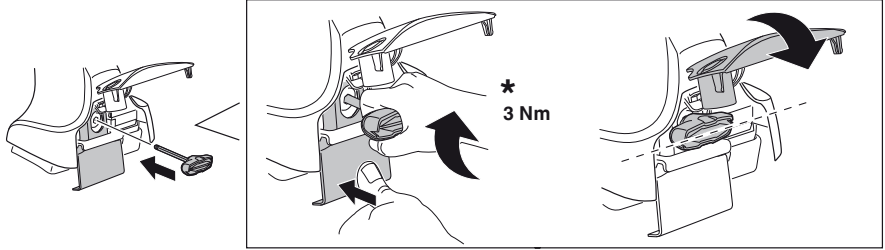
6

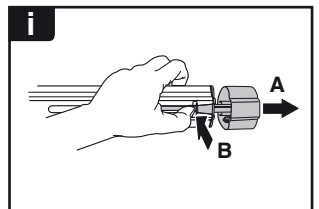
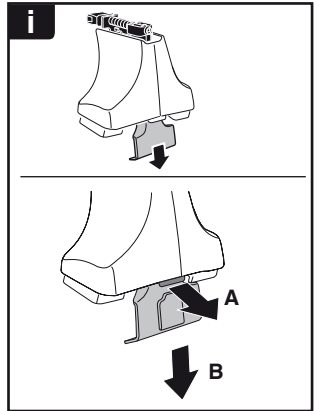
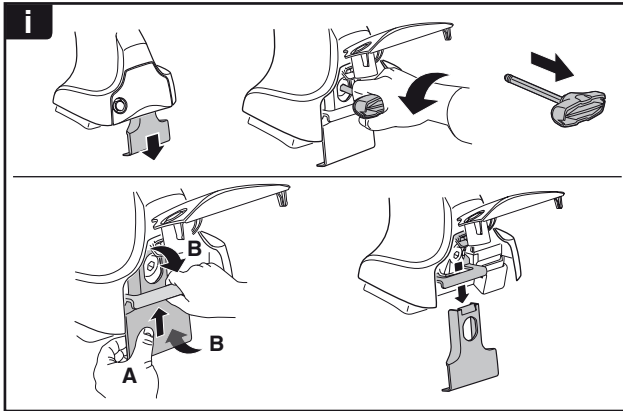
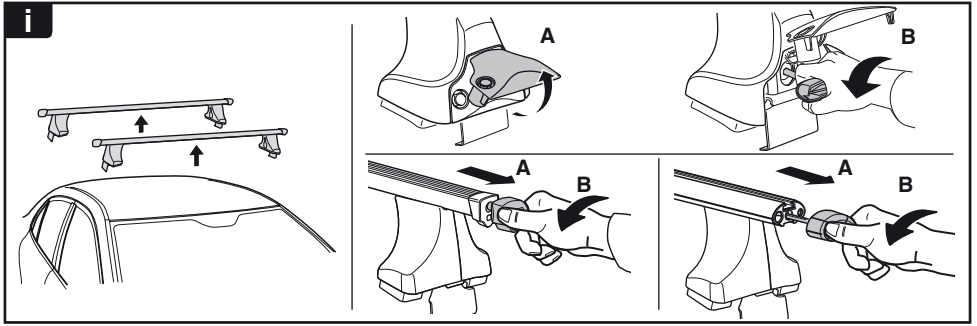


480R/754



480

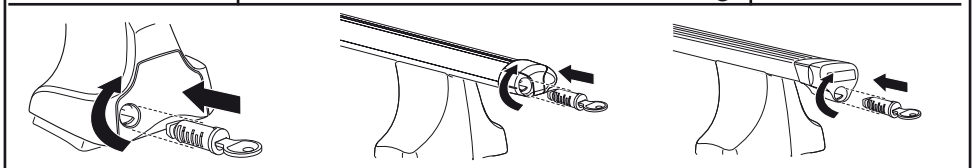




THULE
SWEDEN
**ONE
KEY
SYSTEM**



- 544 (x4)
- 596 (x6)
- 588 (x8)
- NA 510 (x10)
- EUR 452 (x12)
- ASIA



WW ▶ Thule Sweden AB, Box 69, 330 33 Hillerstorp, SWEDEN
NA ▶ Thule Inc., 42 Silvermine Road, Seymour, Connecticut 06483, USA

info@thule.com
customer.service@thule.com

www.thule.com