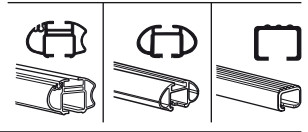


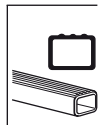
Kit 1159

MAZDA Premacy, 5-dr MPV, 99-01, 02-04

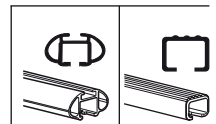
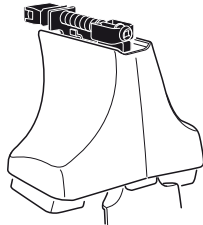
480R
754



480



750



x2 x2 x2 x4	x2	x2 x2 x4 x4	x2 x2	x2

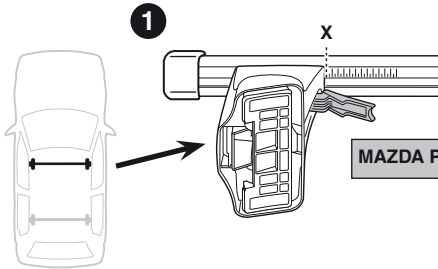
270 x2
271 x2

03 x4

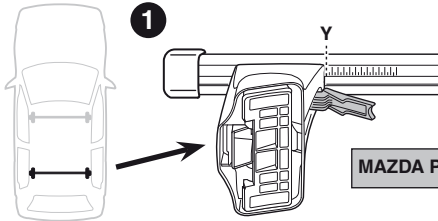
x1

Kit

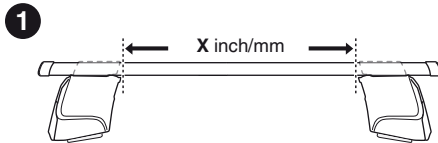
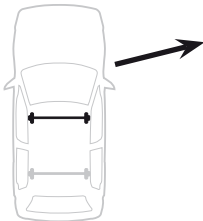




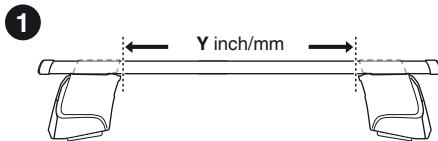
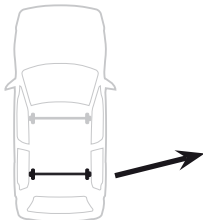
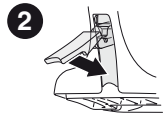
MAZDA Premacy, 5-dr MPV, 99-01, 02-04	X
	38



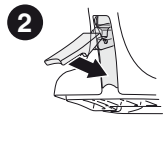
MAZDA Premacy, 5-dr MPV, 99-01, 02-04	Y
	34,5



MAZDA Premacy, 5-dr MPV, 99-01, 02-04	X inch	X mm
	40 5/8"	1031 mm

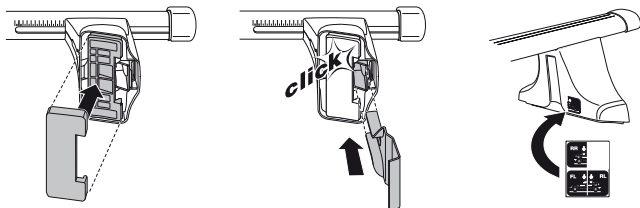
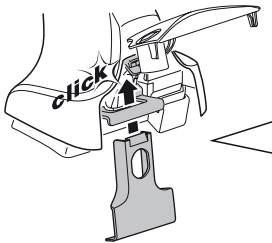
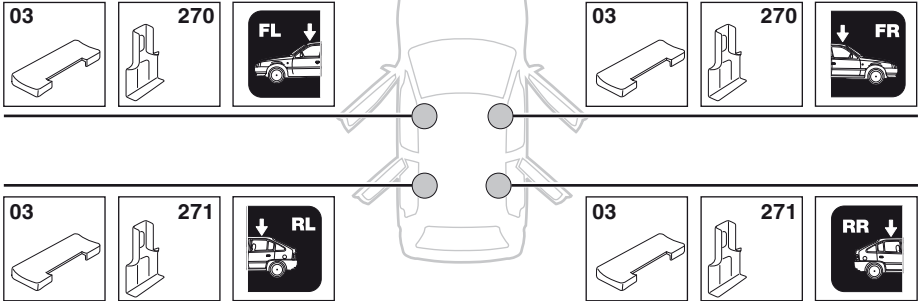


MAZDA Premacy, 5-dr MPV, 99-01, 02-04	Y inch	Y mm
	39 1/4"	996 mm



4

MAZDA Premacy, 5-dr MPV, 99-01, 02-04



5



MAZDA Premacy, 5-dr MPV, 99-01, 02-04

X mm

Y mm

X inch

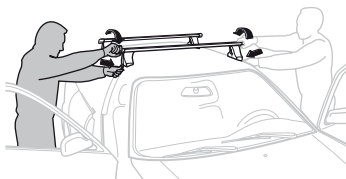
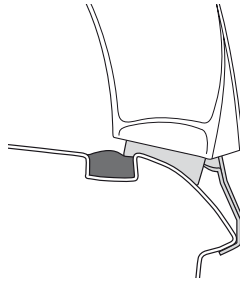
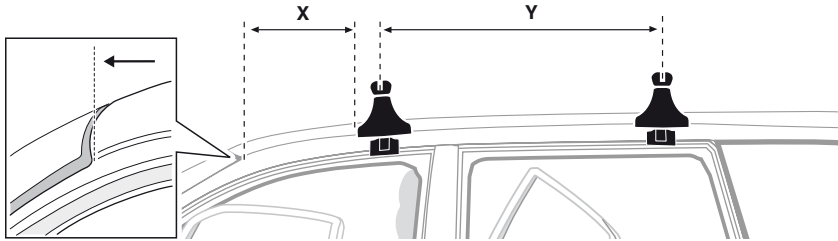
Y inch

400 mm

700 mm

15 3/4"

27 1/2"



GB/US Tighten alternately

D Die Schrauben abwechselnd anziehen

F Serrer alternativement chaque côté

NL Afwisselend aan de linker- en de rechterkant aandraaien

I Alternare il serraggio delle viti

E Apertar alternativamente

PT Aperte alternadamente

S Dra åt växelvis

FIN Kierrä vuorotellen

EST Pinguldage vaheldumisi

LAT Pievelciēt pamīšus

LIT Užsukinėkite pakaitomis

PL Śruby dokręcaj naprzemiennie

RU Затягивайте попеременно

CZ Pokręťta bagažníka dokręcaj dokręcaj naprzemiennie.

SK Doťahujte striedavo

SLO Privijajte izmenično.

HR Naizmjenično zategnite

HU Egymástól függetlenül szorítandó

GR Σφιγγετε εναλλάξ

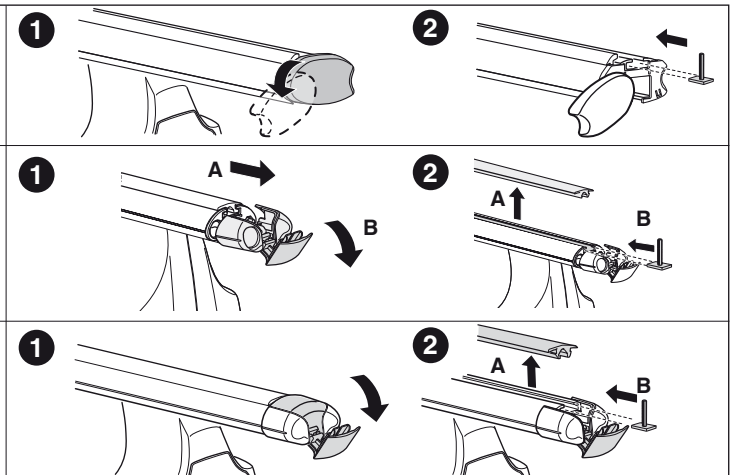
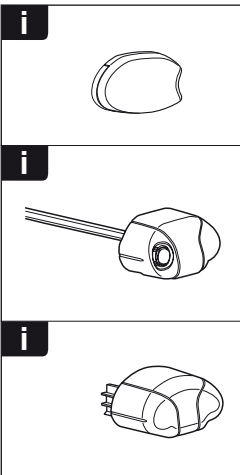
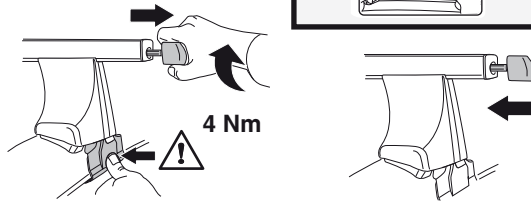
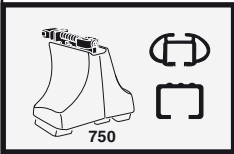
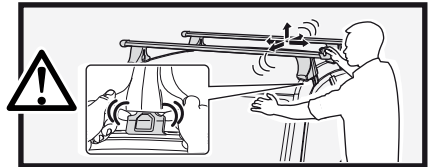
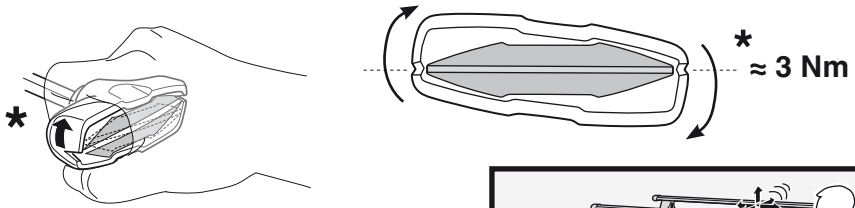
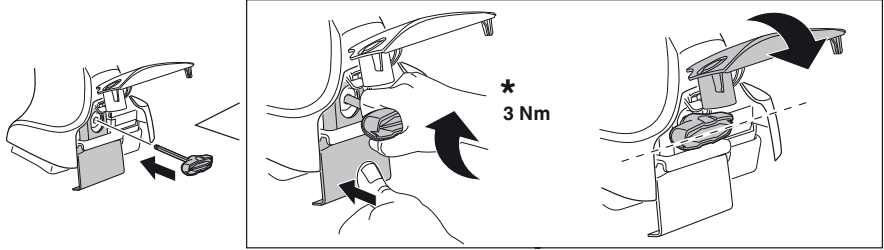
TR Dönüşümlü sıkın

中文 交替拧紧

한국어 번갈아 가며 조이십시오.

日本語 交互に締め付けてください。

ไทย ชันโนแบบสลับ

6



THULE
SWEDEN
**ONE
KEY
SYSTEM**



		(x4)
		(x6)
		(x8)
NA		(x10)
EUR		(x12)
ASIA		(x12)

