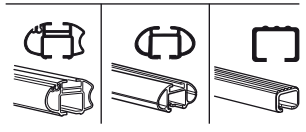
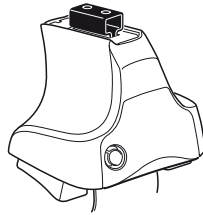


Kit 1123

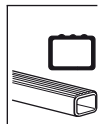
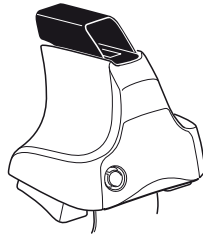
TOYOTA Mark II, 4-dr Sedan, 96-00

TOYOTA Chaser, 4-dr Sedan, 96-00

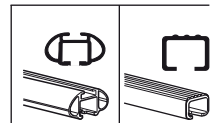
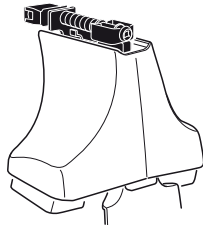
480R
754



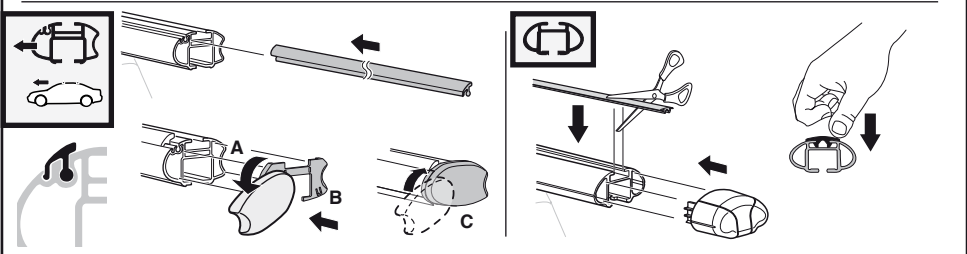
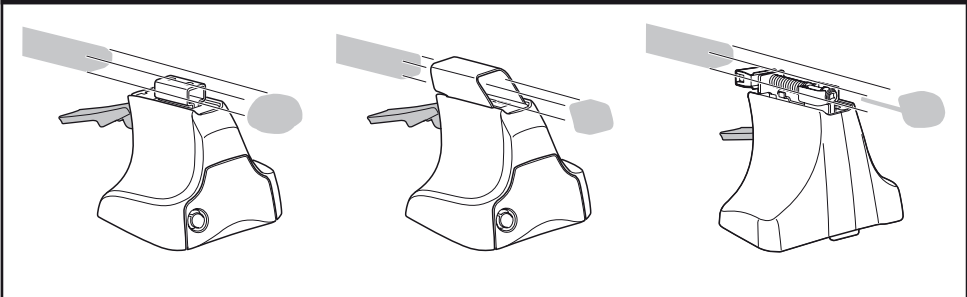
480



750



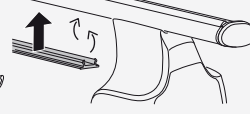
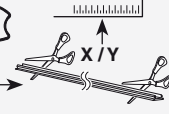
Kit



3



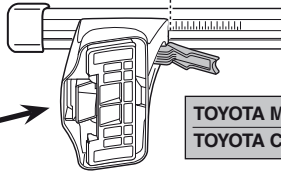
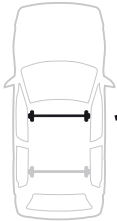
754



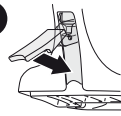
750



1



2

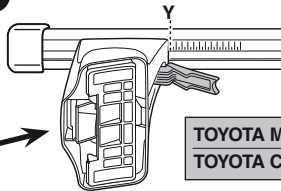
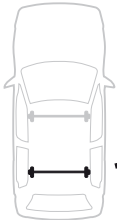


	X
TOYOTA Mark II, 4-dr Sedan, 96-00	32
TOYOTA Chaser, 4-dr Sedan, 96-00	32

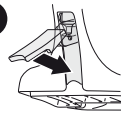
X

32

1



2



	Y
TOYOTA Mark II, 4-dr Sedan, 96-00	31,5
TOYOTA Chaser, 4-dr Sedan, 96-00	31,5

Y

31,5

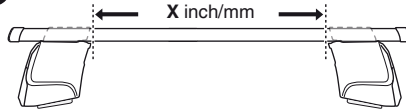


480R



480

1



2



	X inch	X mm
TOYOTA Mark II, 4-dr Sedan, 96-00	38 1/4"	971 mm
TOYOTA Chaser, 4-dr Sedan, 96-00	38 1/4"	971 mm

X inch

X mm

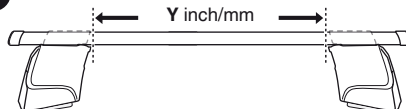
38 1/4"

971 mm

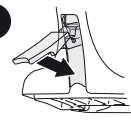
38 1/4"

971 mm

1



2



	Y inch	Y mm
TOYOTA Mark II, 4-dr Sedan, 96-00	38"	966 mm
TOYOTA Chaser, 4-dr Sedan, 96-00	38"	966 mm

Y inch

Y mm

38"

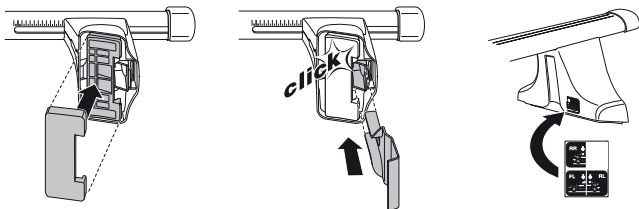
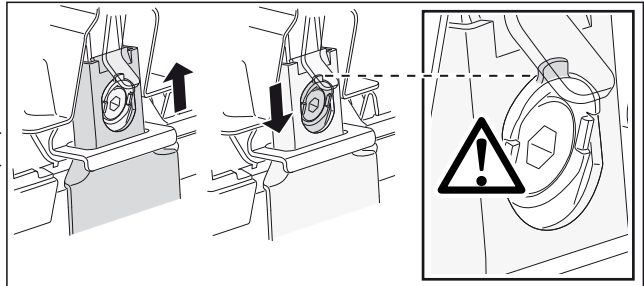
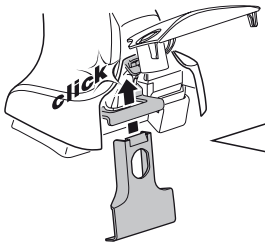
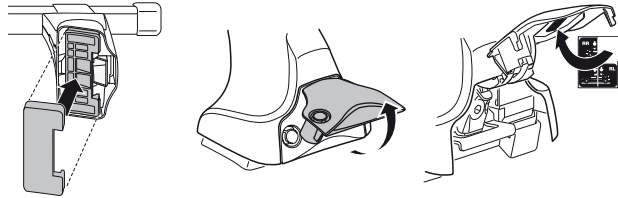
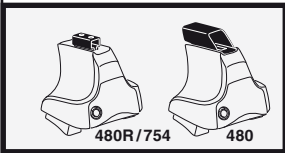
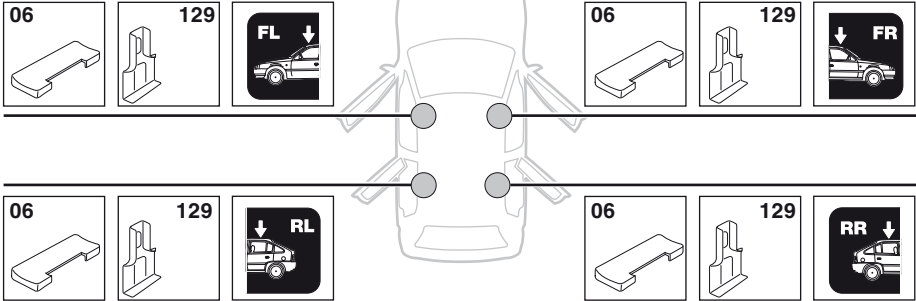
966 mm

38"

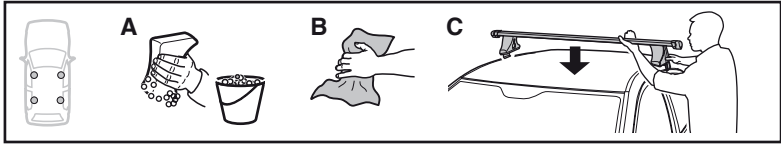
966 mm

4

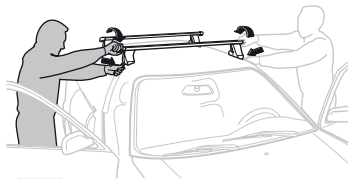
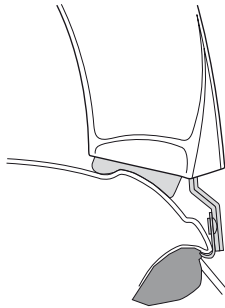
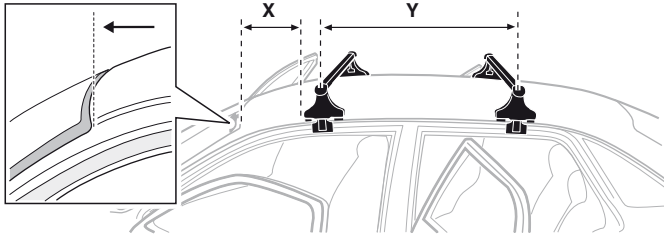
TOYOTA Mark II, 4-dr Sedan, 96-00
 TOYOTA Chaser, 4-dr Sedan, 96-00



5



	X mm	Y mm	X inch	Y inch
TOYOTA Mark II, 4-dr Sedan, 96-00	240 mm	640 mm	9 1/2"	25 1/4"
TOYOTA Chaser, 4-dr Sedan, 96-00	240 mm	640 mm	9 1/2"	25 1/4"



GB/US Tighten alternately

D Die Schrauben abwechselnd anziehen

F Serrer alternativement chaque côté

NL Afwisselend aan de linker- en de rechterkant aandraaien

I Alternare il serraggio delle viti

E Apretar alternativamente

PT Aperte alternadamente

S Dra åt växelvis

FIN Kierrä vuorotellen

EST Pinguldage vaheldumisi

LAT Pielieciet pamišus

LIT Užsukinėkite pakaitomis

PL Śruby dokręcaj naprzemiennie

RU Затягивайте попеременно

CZ Pokręťte bagażníka dokręcaj dokręcaj naprzemiennie.

SK Doťahujte striedavo

SLO Privijajte izmenično.

HR Naizmjenično zategnite

HU Egymástól függetlenül szorítandó

GR Σφίγγετε εναλλάξ

TR Dönüşümlü sıkın

中文 交替拧紧

한국어 번갈아 가며 조이십시오.

日本語 交互に締め付けてください。

ไทย ชั้้นโน้แบบสลับ

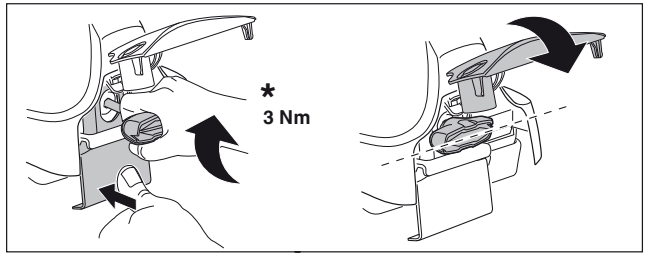
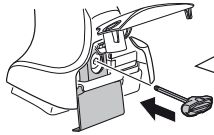
6



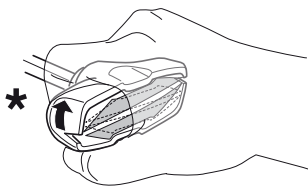
480R/754



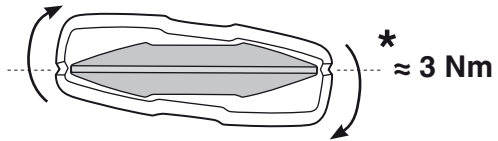
480



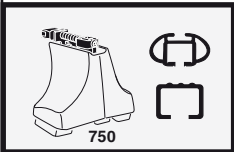
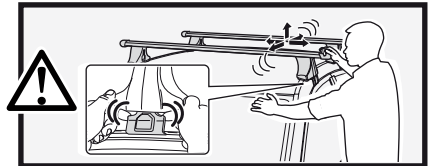
*
3 Nm



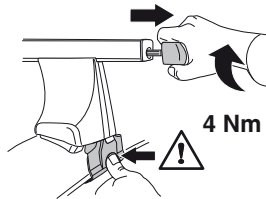
*



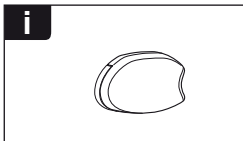
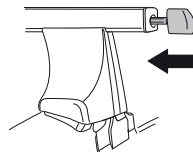
*
≈ 3 Nm



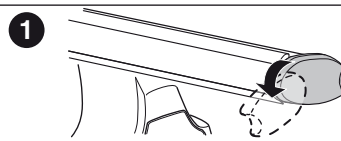
750



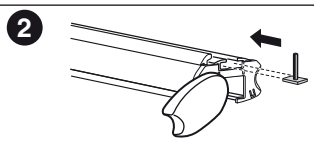
4 Nm



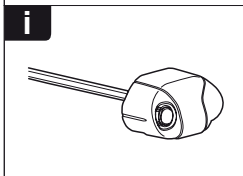
i



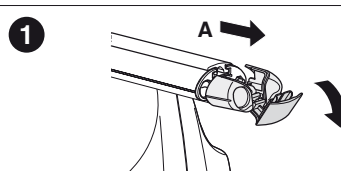
1



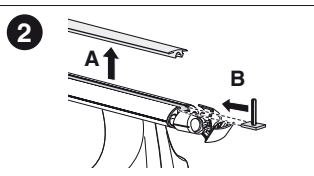
2



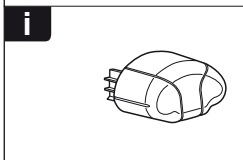
i



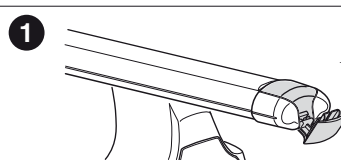
1



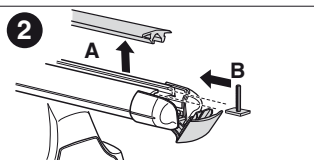
2



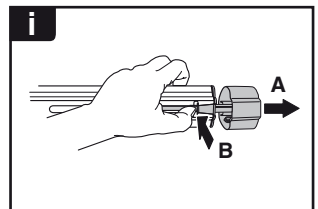
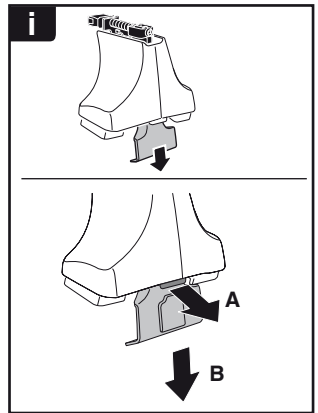
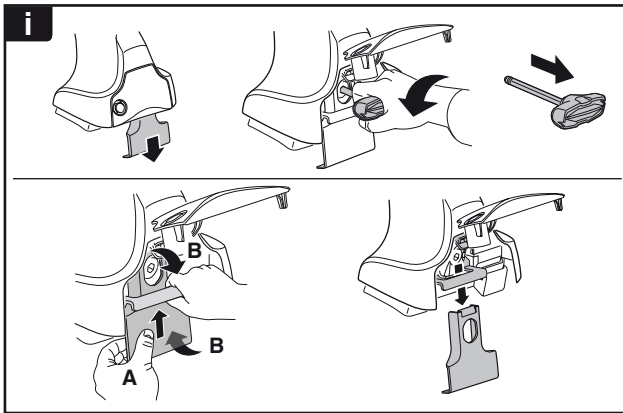
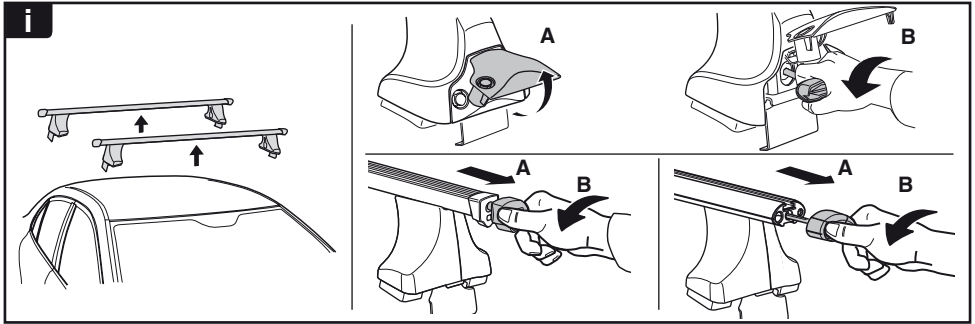
i



1



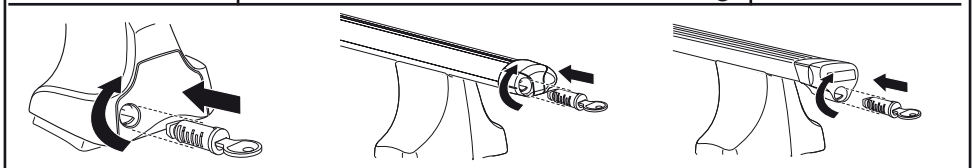
2



THULE
SWEDEN
**ONE
KEY
SYSTEM**



- 544 (x4)
- 596 (x6)
- 588 (x8)
- NA 510 (x10)
- EUR 452 (x12)
- ASIA



WW ▶ Thule Sweden AB, Box 69, 330 33 Hillerstorp, SWEDEN
 NA ▶ Thule Inc., 42 Silvermine Road, Seymour, Connecticut 06483, USA

info@thule.com
 customer.service@thule.com

www.thule.com