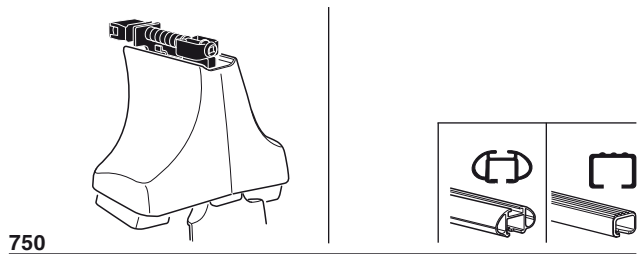
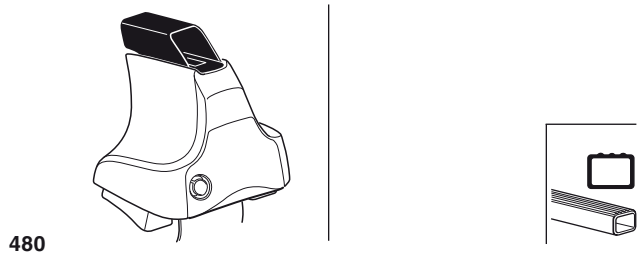
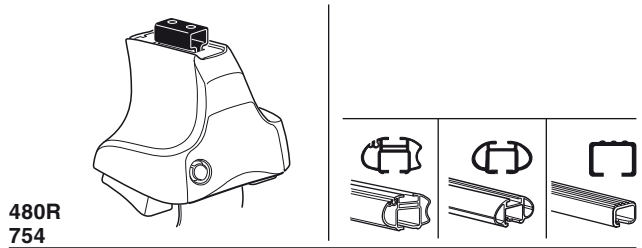
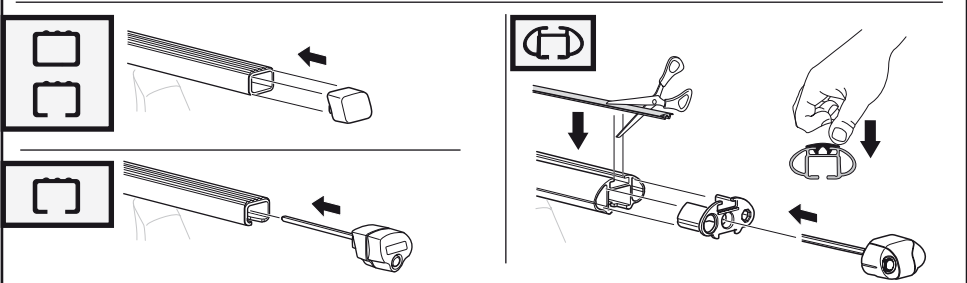
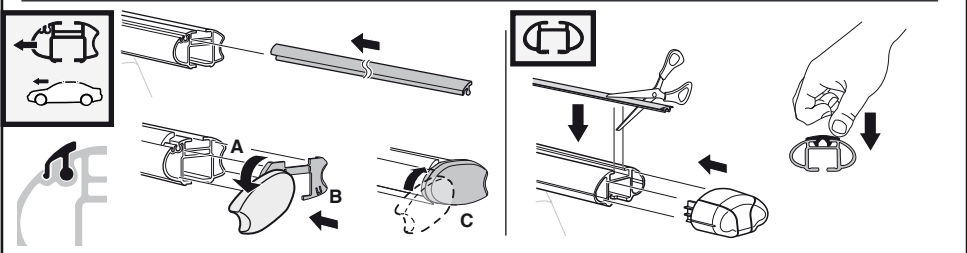
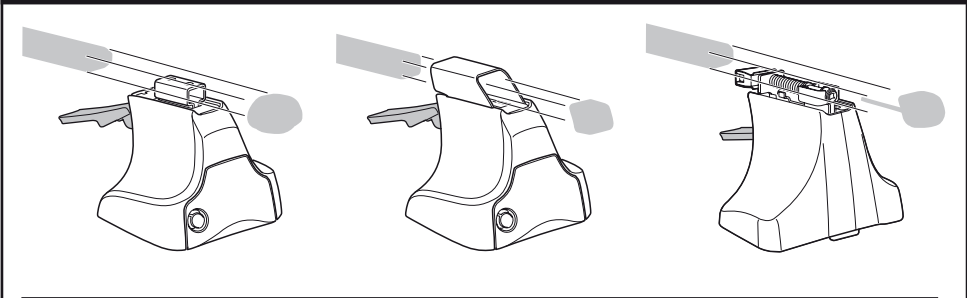
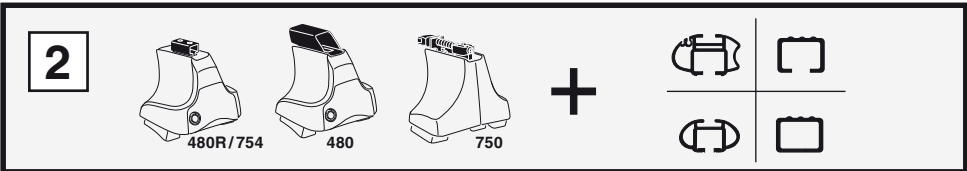
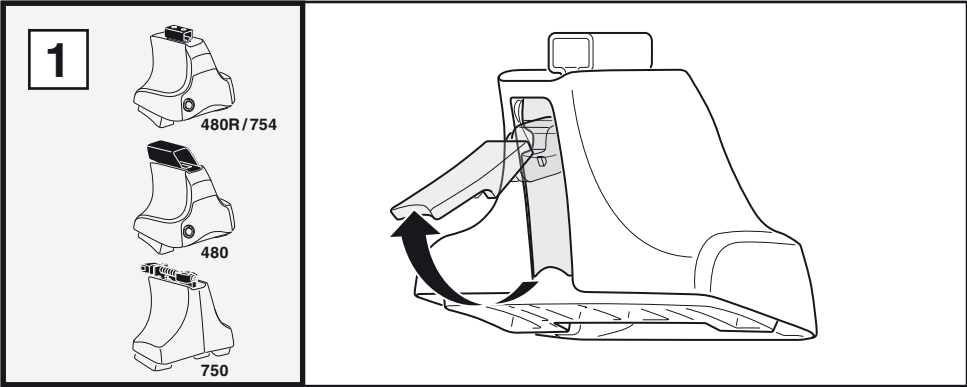


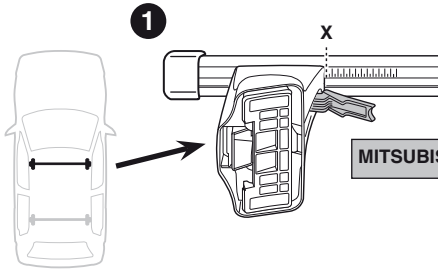
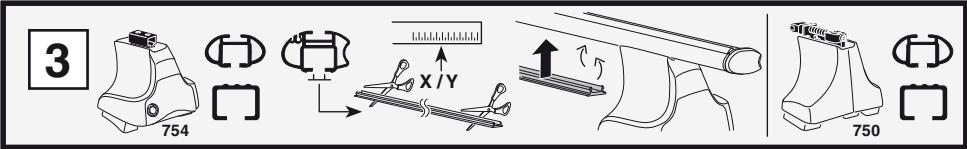
# Kit 1097

MITSUBISHI Space Star, 5-dr MPV, 98-01, 02-05

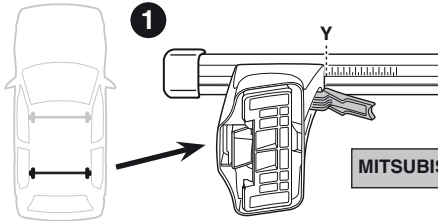


**Kit**

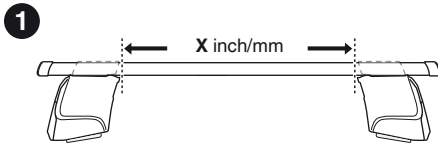
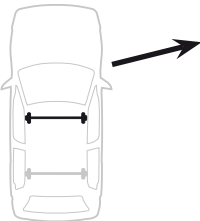
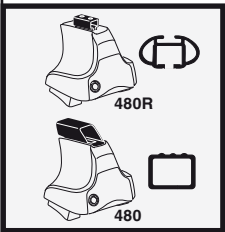




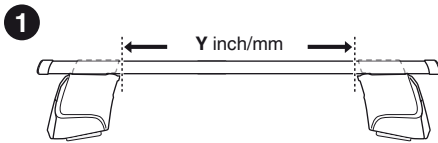
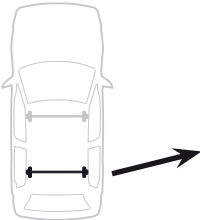
	X
MITSUBISHI Space Star, 5-dr MPV, 98-01, 02-05	30,5



	Y
MITSUBISHI Space Star, 5-dr MPV, 98-01, 02-05	28,5



	X inch	X mm
MITSUBISHI Space Star, 5-dr MPV, 98-01, 02-05	37 <sup>5</sup> / <sub>8</sub> "	956 mm

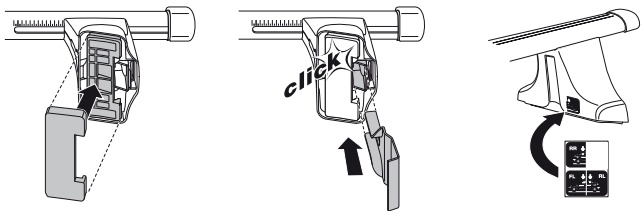
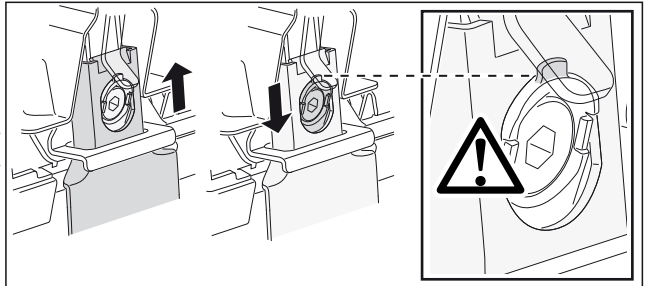
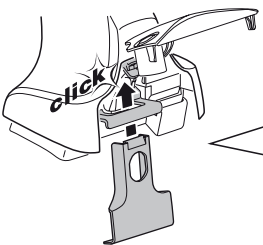
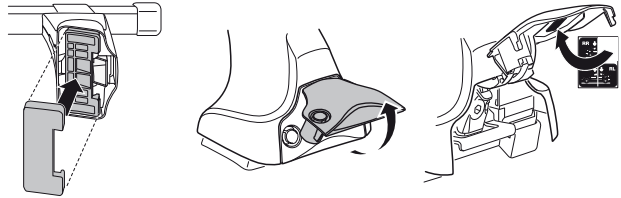
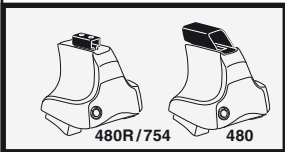


	Y inch	Y mm
MITSUBISHI Space Star, 5-dr MPV, 98-01, 02-05	36 <sup>7</sup> / <sub>8</sub> "	936 mm

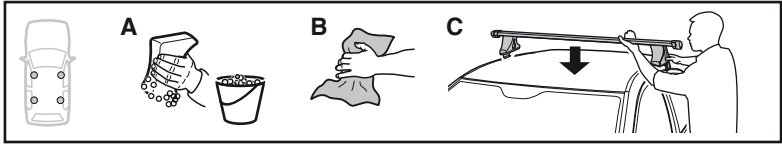


# 4

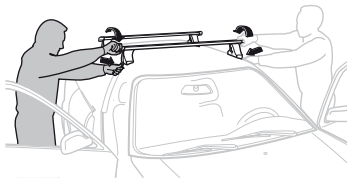
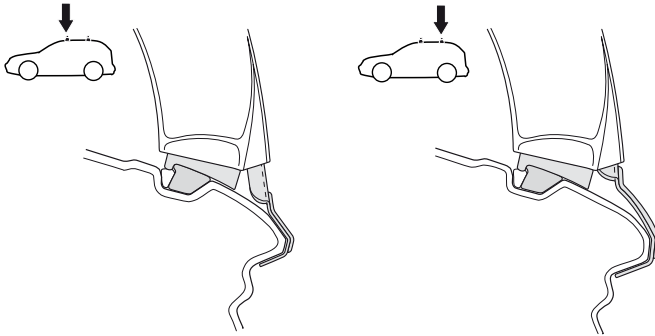
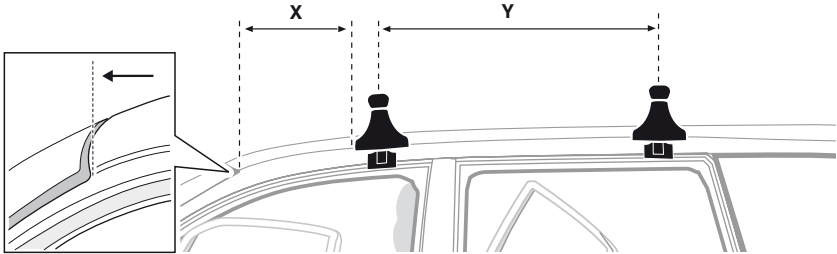
MITSUBISHI Space Star, 5-dr MPV, 98-01, 02-05



5



	X mm	Y mm	X inch	Y inch
MITSUBISHI Space Star, 5-dr MPV, 98-01, 02-05	350 mm	700 mm	13 3/4"	27 1/2"



**GB/US** Tighten alternately

**D** Die Schrauben abwechselnd anziehen

**F** Serrer alternativement chaque côté

**NL** Afwisselend aan de linker- en de rechterkant aandraaien

**I** Alternare il serraggio delle viti

**E** Apretar alternativamente

**PT** Aperte alternadamente

**S** Dra åt växelvis

**FIN** Kierrä vuorotellen

**EST** Pinguldage vaheldumisi

**LAT** Pielieciet pamišus

**LIT** Užsukinėkite pakaitomis

**PL** Śruby dokręcaj naprzemiennie

**RU** Затягивайте попеременно

**CZ** Pokręťta bagažníka dokręcaj dokręcaj naprzemiennie.

**SK** Doťahujte striedavo

**SLO** Privijajte izmenično.

**HR** Naizmjenično zategnite

**HU** Egymástól függetlenül szorítandó

**GR** Σφιγγετε εναλλάξ

**TR** Dönüşümlü sıkın

**中文** 交替拧紧

**한국어** 번갈아 가며 조이십시오.

**日本語** 交互に締め付けてください。

**ไทย** ชันโนแบบสลับ

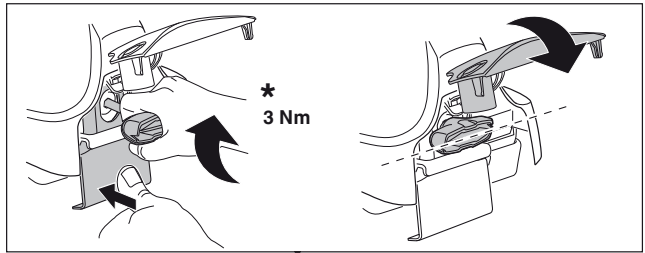
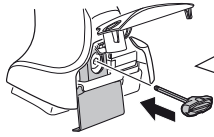
6



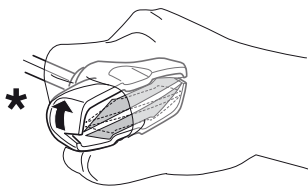
480R/754



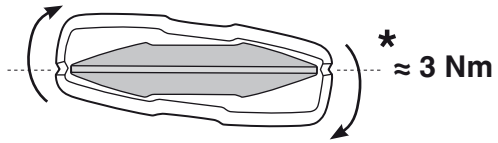
480



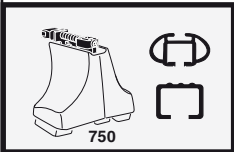
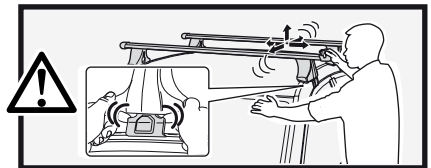
\*  
3 Nm



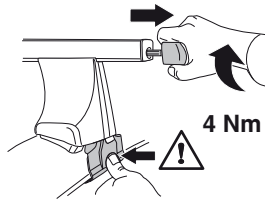
\*



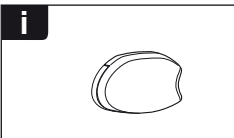
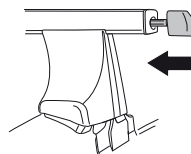
\*  
≈ 3 Nm



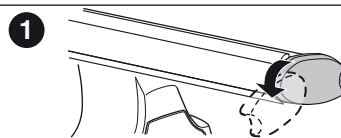
750



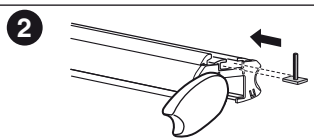
4 Nm



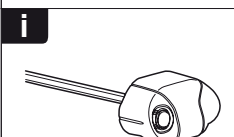
i



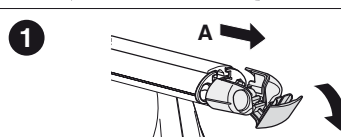
1



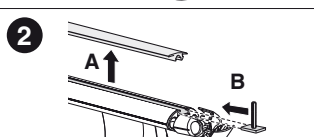
2



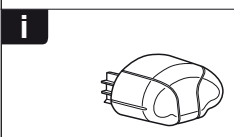
i



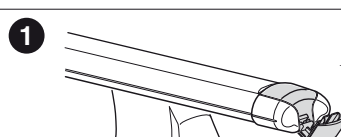
1



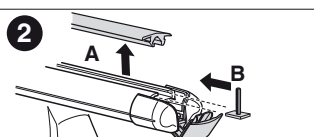
2



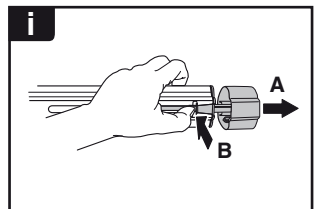
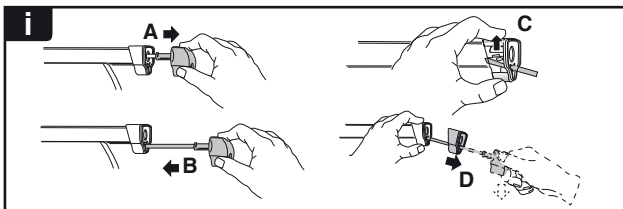
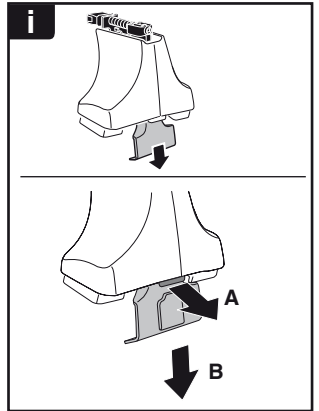
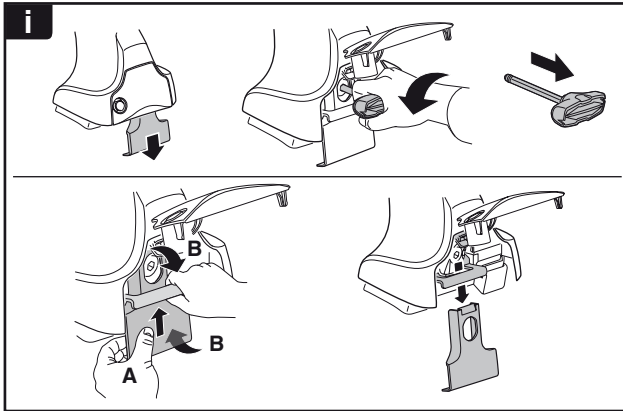
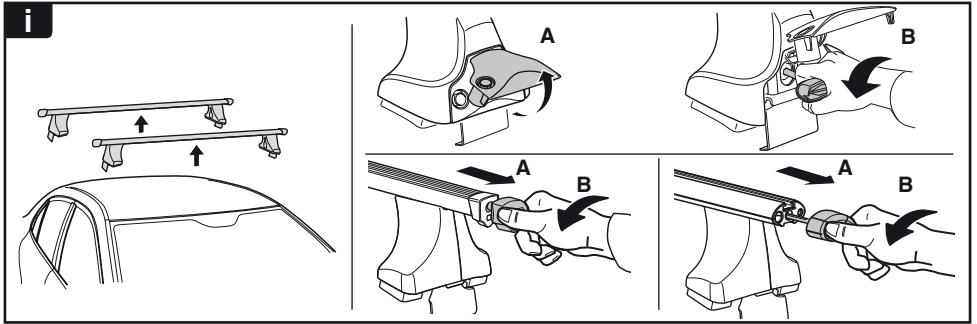
i



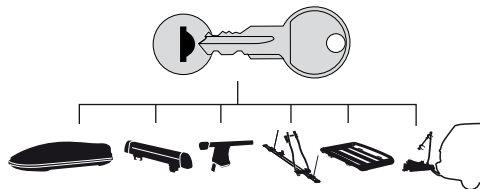
1



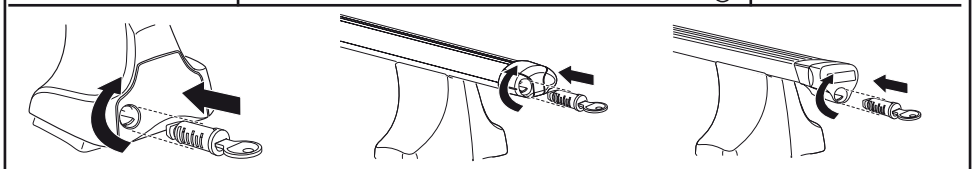
2



**THULE**  
SWEDEN  
**ONE  
KEY  
SYSTEM**



		544	(x4)
		596	(x6)
		588	(x8)
NA		510	(x10)
EUR		452	(x12)
ASIA			



WW ▶ Thule Sweden AB, Box 69, 330 33 Hillerstorp, SWEDEN  
NA ▶ Thule Inc., 42 Silvermine Road, Seymour, Connecticut 06483, USA

info@thule.com  
customer.service@thule.com

www.thule.com