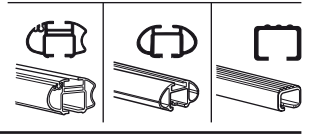


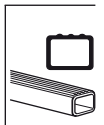
Kit 1090

NISSAN Homy Elgrand, 5-dr Estate, 97-01

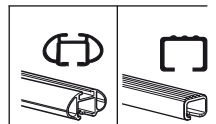
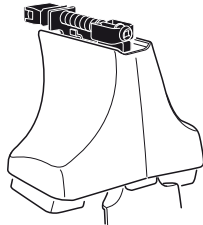
480R
754



480



750



Max. 75kg
Max. 165 lbs

Kit XXXX

x1
 x4
 x4
 x4
 x4

480R/754

x1
 x4
 x4
 x4

480

x1
 x4
 x4

750

x2 x2 x2 x4	x2	x2 x2 x4 x4	x2 x2	x2
----------------------	----	----------------------	----------	----

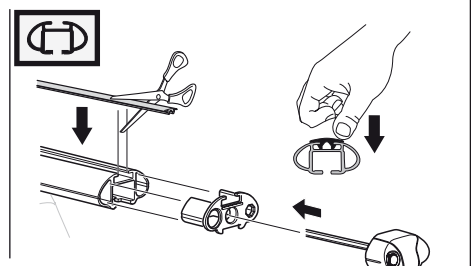
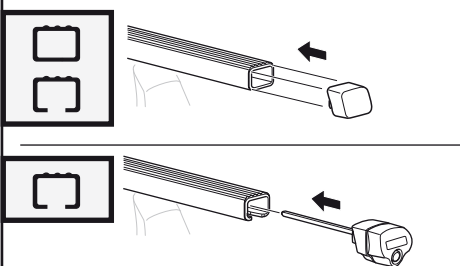
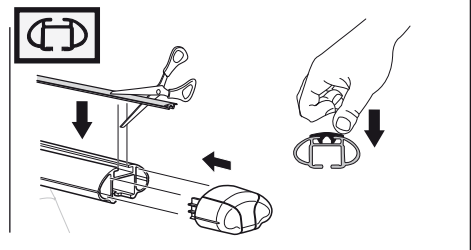
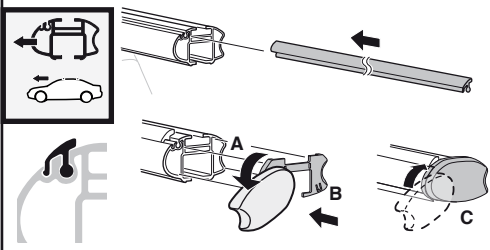
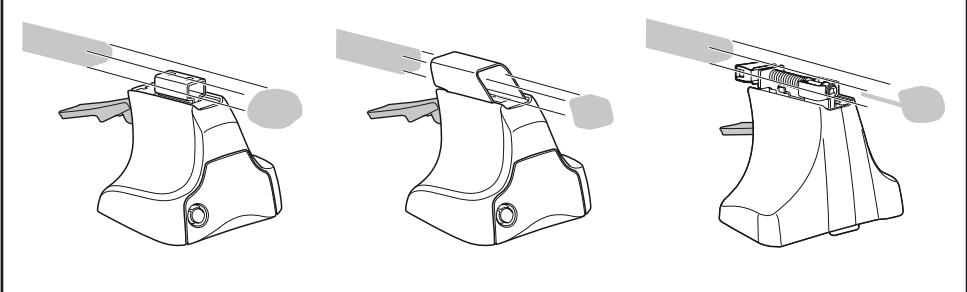
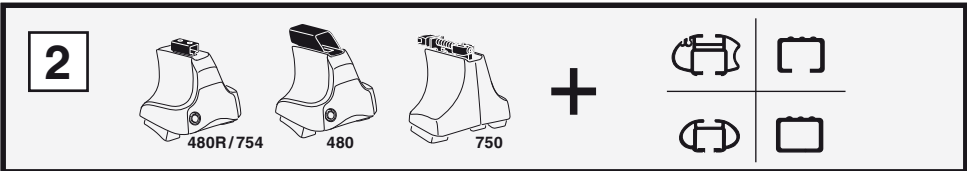
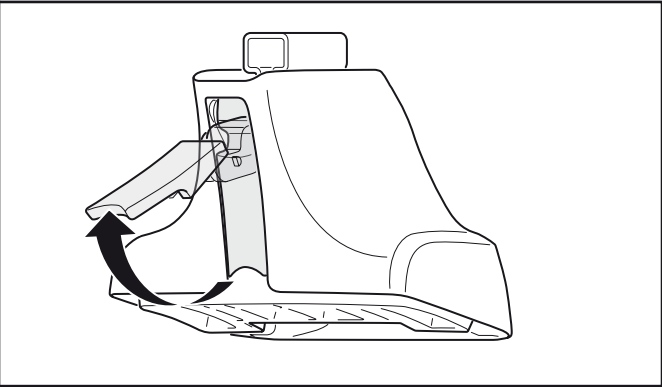
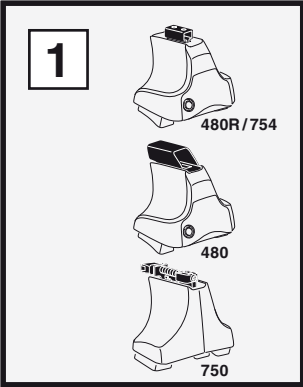
215 x4

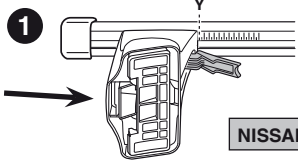
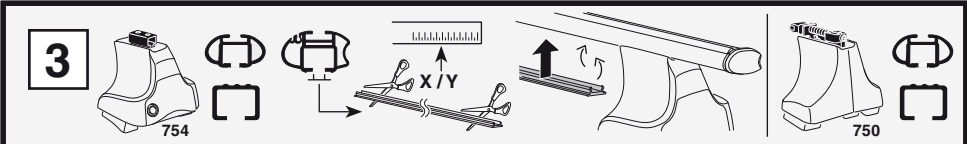
02 x2

16 x2

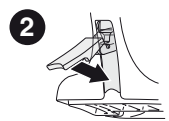
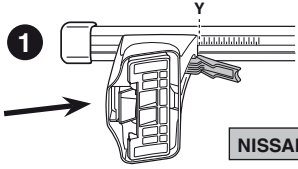
x1

Kit

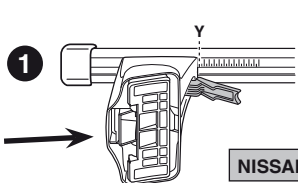




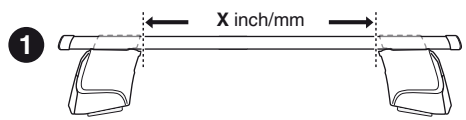
	X
NISSAN Homy Elgrand, 5-dr Estate, 97-01	39,5



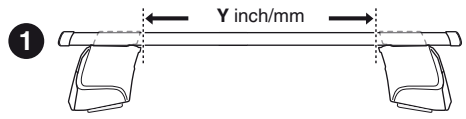
	Y
NISSAN Homy Elgrand, 5-dr Estate, 97-01	39



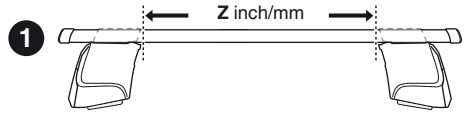
	Z
NISSAN Homy Elgrand, 5-dr Estate, 97-01	34,5



	X inch	X mm
NISSAN Homy Elgrand, 5-dr Estate, 97-01	41 1/8"	1046 mm



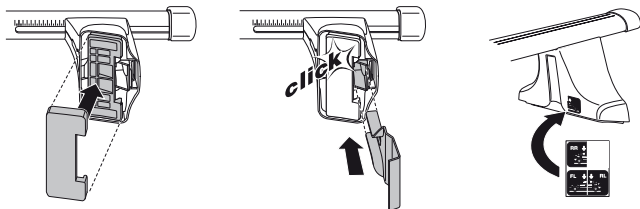
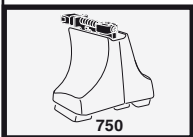
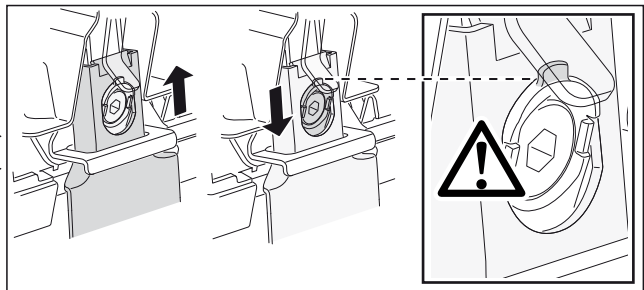
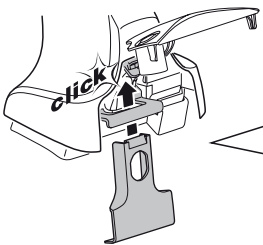
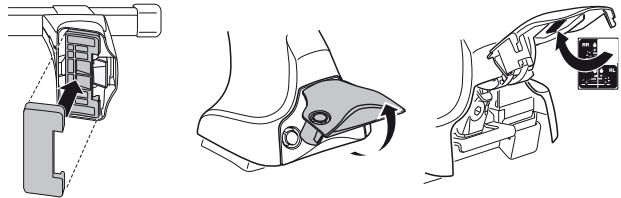
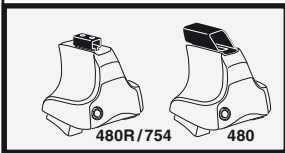
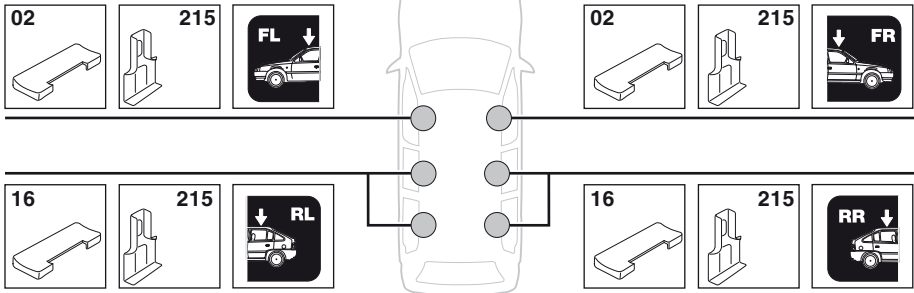
	Y inch	Y mm
NISSAN Homy Elgrand, 5-dr Estate, 97-01	41"	1041 mm



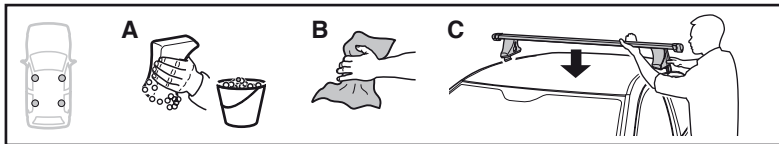
	Z inch	Z mm
NISSAN Homy Elgrand, 5-dr Estate, 97-01	39 1/4"	996 mm

4

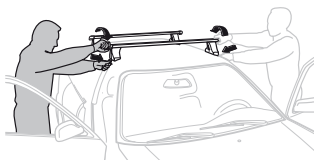
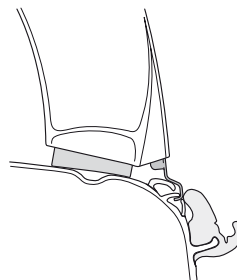
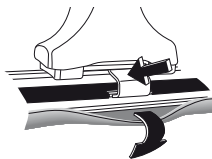
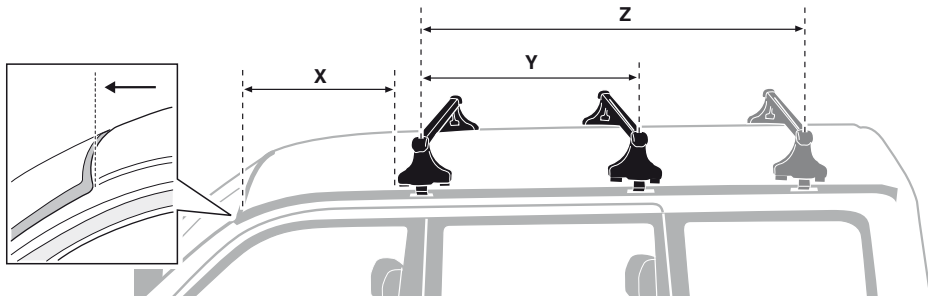
NISSAN Homy Elgrand, 5-dr Estate, 97-01



5



	X mm	Y mm	Z mm	X inch	Y inch	Z inch
NISSAN Homy Elgrand, 5-dr Estate, 97-01	770 mm	750 mm	1500 mm	30 ³ / ₈ "	29 ¹ / ₂ "	59"



- GB/US** Tighten alternately
- D** Die Schrauben abwechselnd anziehen
- F** Serrer alternativement chaque côté
- NL** Afwisselend aan de linker- en de rechterkant aandraaien
- I** Alternare il serraggio delle viti
- E** Apretar alternativamente
- PT** Aperte alternadamente
- S** Dra åt växelvis
- FIN** Kierrä vuorotellen
- EST** Pinguldage vaheldumisi
- LAT** Pievelciēt pamišus
- LIT** Užsukinėkite pakaitomis
- PL** Śruby dokręcaj naprzemiennie
- RU** Затягивайте попеременно

- CZ** Pokręťta bagażnika dokręcaj dokręcaj naprzemiennie.
- SK** Dofahujte striedavo
- SLO** Privijajte izmenično.
- HR** Naizmjenično zategnite
- HU** Egymástól függetlenül szorítandó
- GR** Σφιγίγνετε εναλλάξ
- TR** Dönüşümlü sıkın

中文 交替拧紧

한국어 번갈아 가며 조이십시오.

日本語 交互に締め付けてください。

ไทย ขันน๊อตแบบสลับ

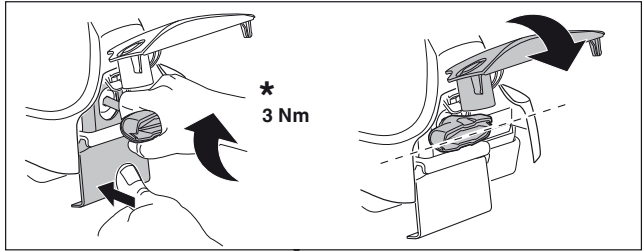
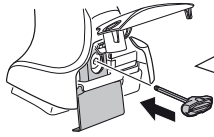
6



480R/754



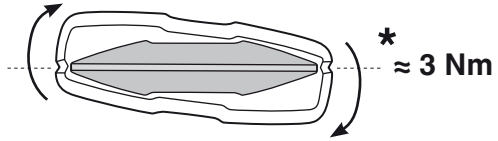
480



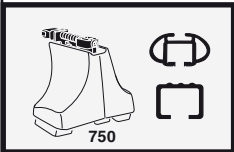
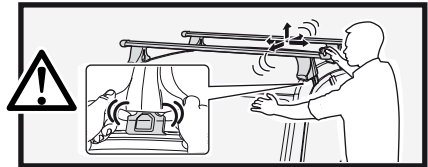
*
3 Nm



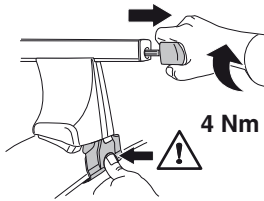
*



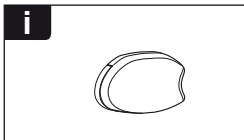
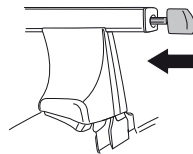
*
≈ 3 Nm



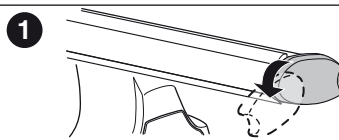
750



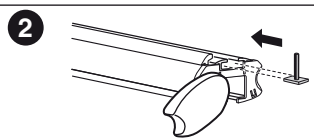
4 Nm



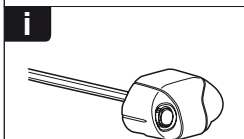
i



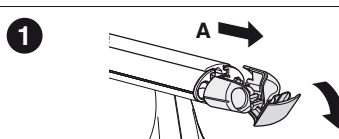
1



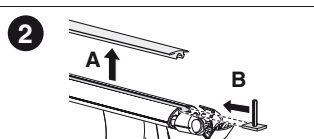
2



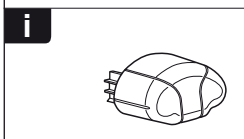
i



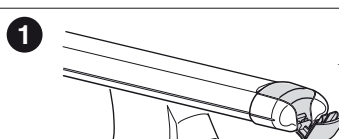
1



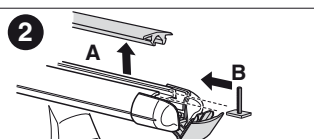
2



i



1



2



THULE
SWEDEN
**ONE
KEY
SYSTEM**



		(x4)
		(x6)
		(x8)
NA		(x10)
EUR		(x12)
ASIA		(x12)



WW ▶ Thule Sweden AB, Box 69, 330 33 Hillerstorp, SWEDEN
NA ▶ Thule Inc., 42 Silvermine Road, Seymour, Connecticut 06483, USA

info@thule.com
customer.service@thule.com

www.thule.com