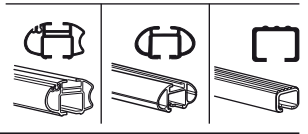
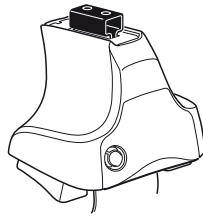


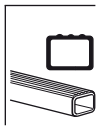
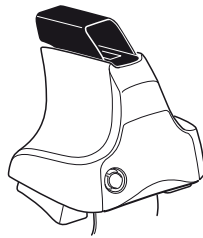
Kit 1087

FORD Puma, 2-dr Coupé, 97-01

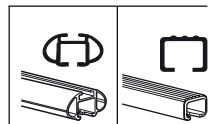
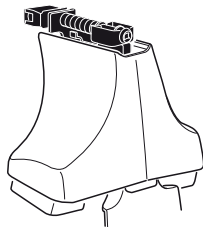
480R
754



480



750



xx kg
 xx lbs + 7 kg / 15,4 lbs = **Max. 75kg**
 3 kg / 6,6 lbs = **Max. 165 lbs**

80 km/h 50 Mph 130 km/h 80 Mph
 40 km/h 25 Mph
km/h Mph

THULE + **Kit XXXX**

x1 x4 x4 x4 x4
480R/754

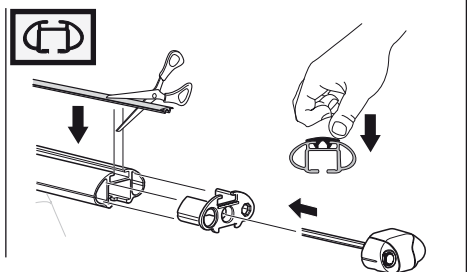
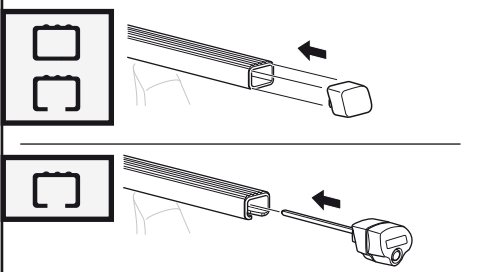
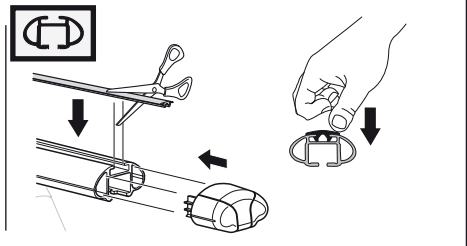
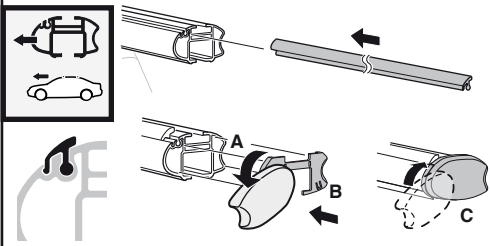
x1 x4 x4 x4 x4
480

x1 x4 x4
750

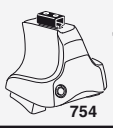
x2	x2	x2	x2	x2
x2	x2	x2	x2	x2
x2	x2	x2	x2	x2
x4	x2	x2	x2	x2
		x4	x4	

229 x 4 **04** x 4 **RR** **FR** **FL** **RL** x 1

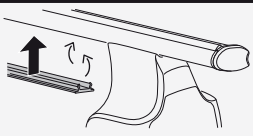
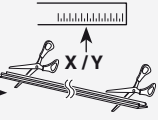
Kit



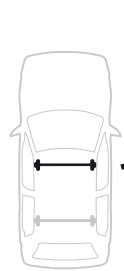
3



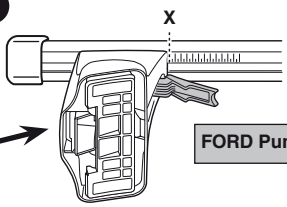
754



750



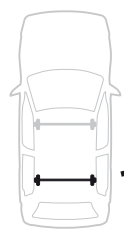
1



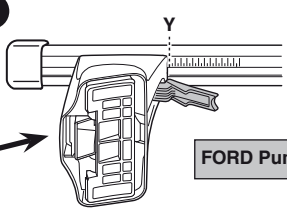
2



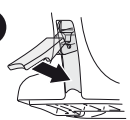
FORD Puma, 2-dr Coupé, 97-01	X
	21



1



2



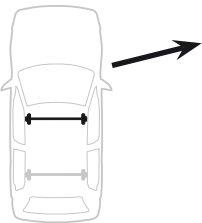
FORD Puma, 2-dr Coupé, 97-01	Y
	18,5



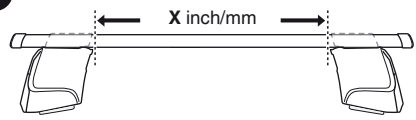
480R



480



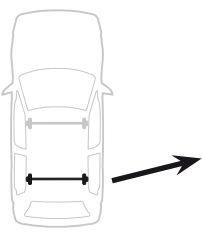
1



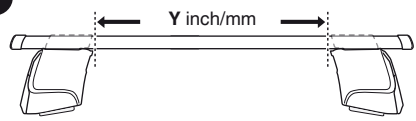
2



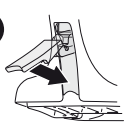
FORD Puma, 2-dr Coupé, 97-01	X inch	X mm
	33 7/8"	861 mm



1



2

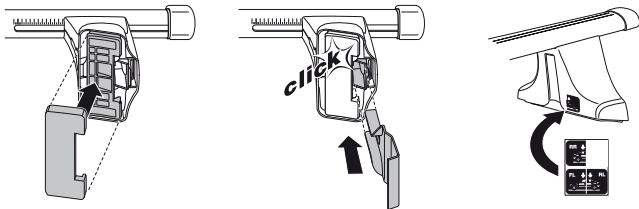
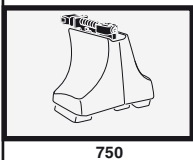
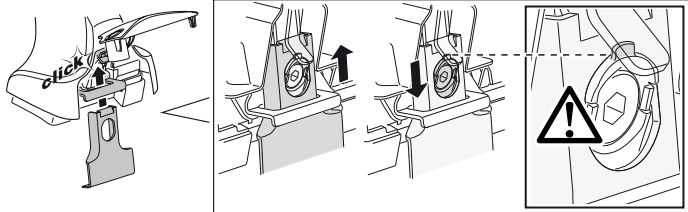
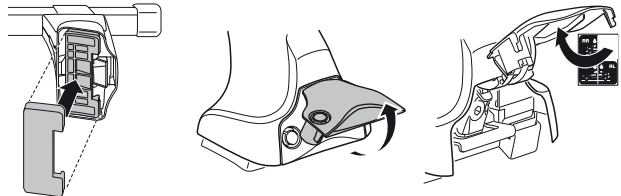
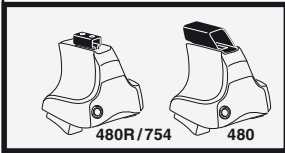
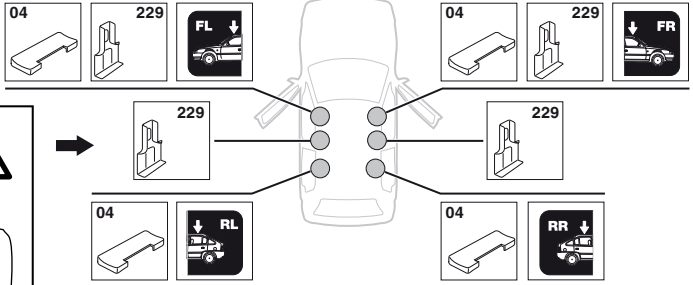
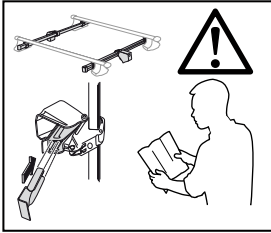


FORD Puma, 2-dr Coupé, 97-01	Y inch	Y mm
	32 7/8"	836 mm

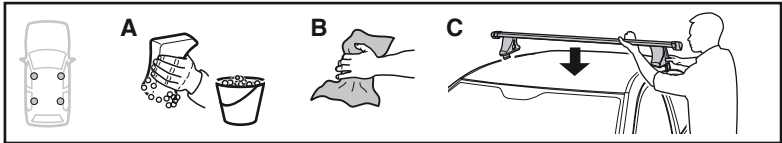
4

FORD Puma, 2-dr Coupé, 97-01

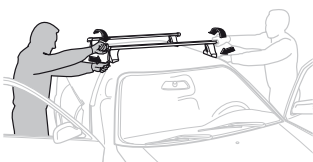
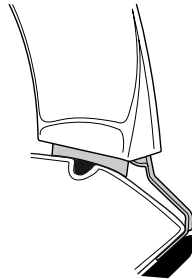
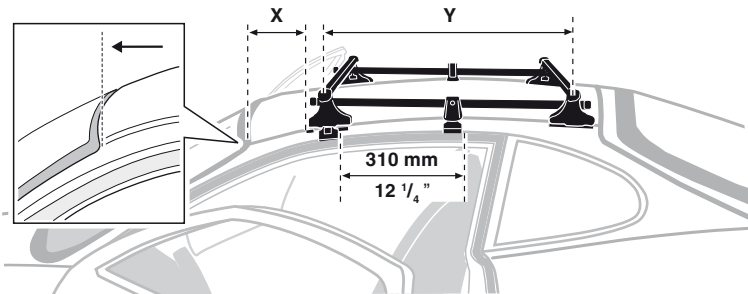
SRA



5



	X mm	Y mm	X inch	Y inch
FORD Puma, 2-dr Coupé, 97-01	220 mm	620 mm	8 5/8"	24 3/8"



- GB/US** Tighten alternately
- D** Die Schrauben abwechselnd anziehen
- F** Serrer alternativement chaque côté
- NL** Afwisselend aan de linker- en de rechterkant aandraaien
- I** Alternare il serraggio delle viti
- E** Apretar alternativamente
- PT** Aperte alternadamente
- S** Dra åt växelvis
- FIN** Kierrä vuorotellen
- EST** Pinguldage vaheldumisi
- LAT** Pievelciēt pamišus
- LIT** Užsukinėkite pakaitomis
- PL** Śruby dokręcaj naprzemiennie
- RU** Затягивайте попеременно

- CZ** Pokrétla багаžnika dokręcaj dokręcaj naprzemiennie.
- SK** Dofahujte striedavo
- SLO** Privijajte izmenično.
- HR** Naizmjenično zategnite
- HU** Egymástól függetlenül szorítandó
- GR** Σφιγγετε εναλλάξ
- TR** Dönüşümlü sıkın
- 中文** 交替拧紧
- 한국어** 번갈아 가며 조이십시오.
- 日本語** 交互に締め付けてください。
- ไทย** ชันในแบบสลับ

6



480R/754



480



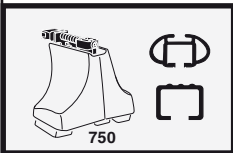
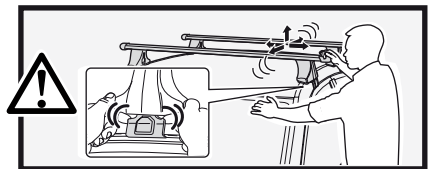
*
3 Nm



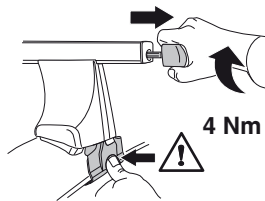
*



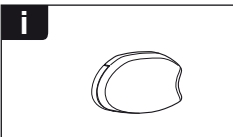
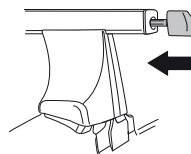
*
≈ 3 Nm



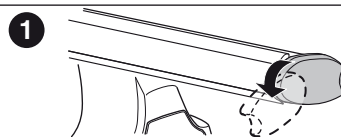
750



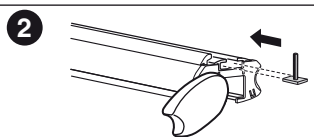
4 Nm



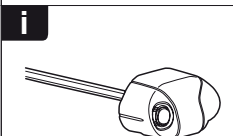
i



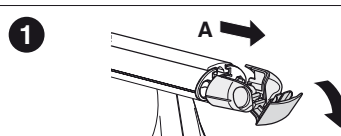
1



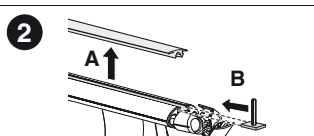
2



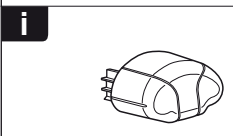
i



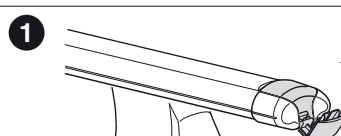
1



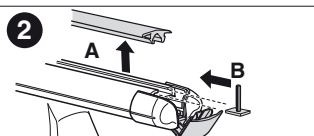
2



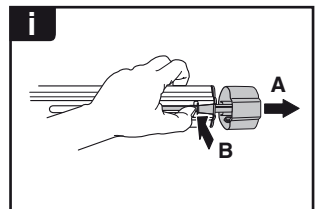
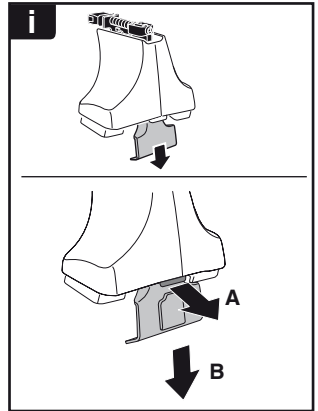
i



1



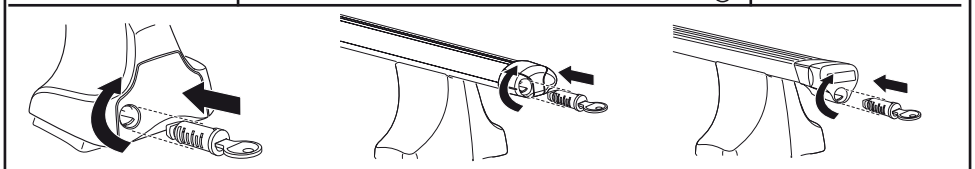
2



THULE
SWEDEN
**ONE
KEY
SYSTEM**



- 544 (x4)
- 596 (x6)
- 588 (x8)
- NA 510 (x10)
- EUR 452 (x12)
- ASIA



WW ▶ Thule Sweden AB, Box 69, 330 33 Hillerstorp, SWEDEN
 NA ▶ Thule Inc., 42 Silvermine Road, Seymour, Connecticut 06483, USA

info@thule.com
 customer.service@thule.com

www.thule.com