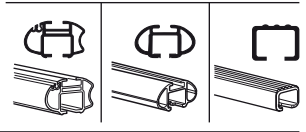
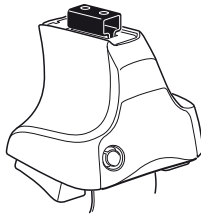


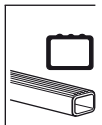
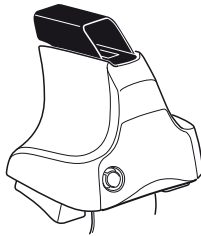
Kit 1079

MITSUBISHI Lancer, 4-dr Sedan, 96-99

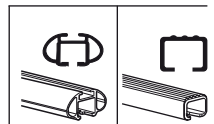
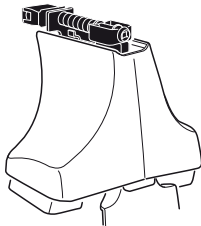
480R
754



480



750



Max. 75kg
Max. 165 lbs

Kit XXXX

x1
 x4
 x4
 x4
 x4

480R/754

x1
 x4
 x4
 x4

480

x1
 x4
 x4

750

x2 x2 x2 x4	x2	x2 x2 x4 x4	x2 x2	x2
----------------------	----	----------------------	----------	----

206 x2
 207 x2

11 x2
 12 x2

x1

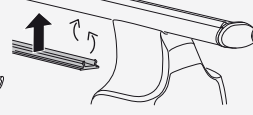
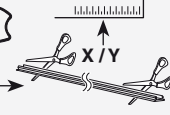
Kit



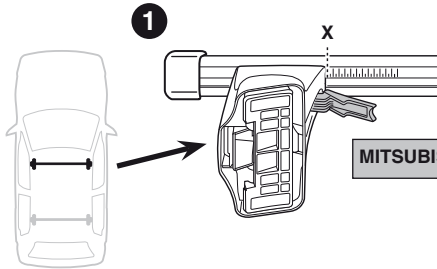
3



754



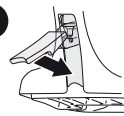
750



1

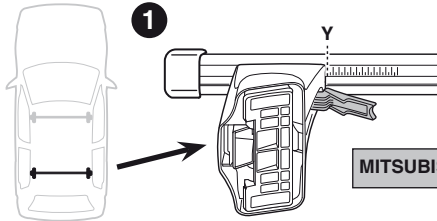
X

2



MITSUBISHI Lancer, 4-dr Sedan, 96-99

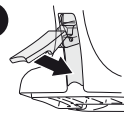
X
25,5



1

Y

2



MITSUBISHI Lancer, 4-dr Sedan, 96-99

Y
24,5

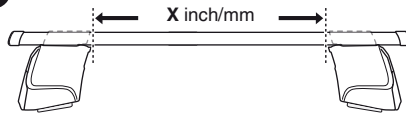


480R

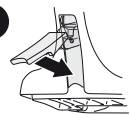


480

1



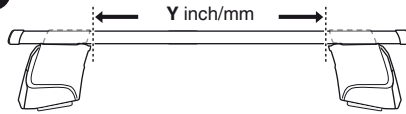
2



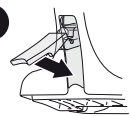
MITSUBISHI Lancer, 4-dr Sedan, 96-99

X inch	X mm
35 5/8"	906 mm

1



2

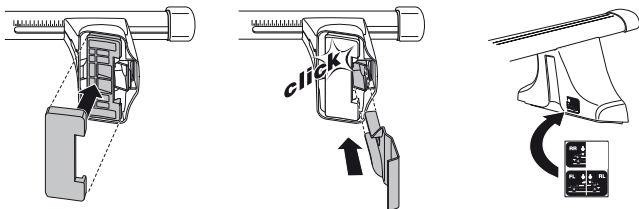
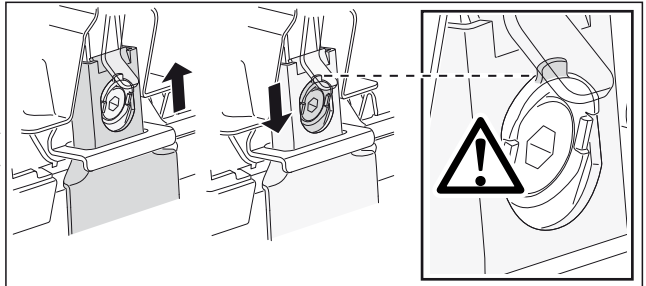
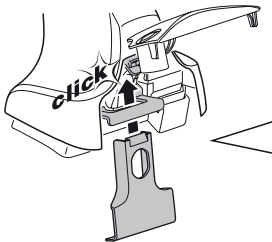
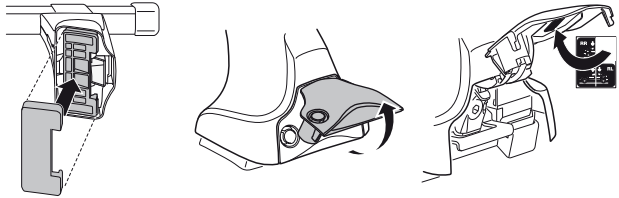
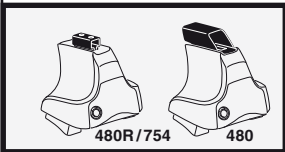
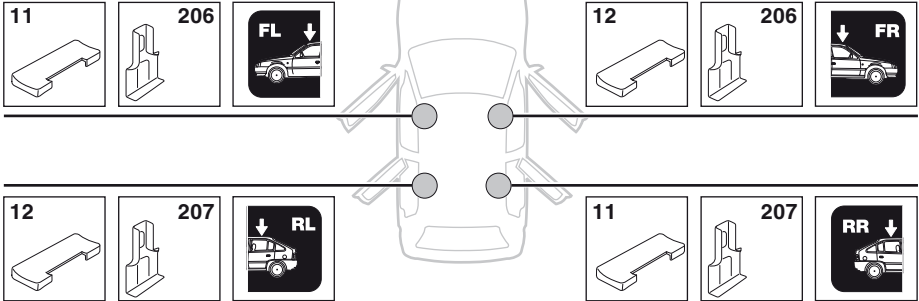


MITSUBISHI Lancer, 4-dr Sedan, 96-99

Y inch	Y mm
35 1/4"	896 mm

4

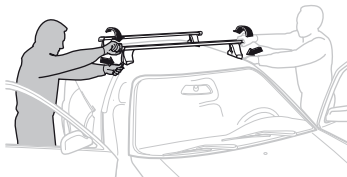
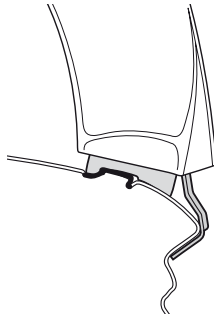
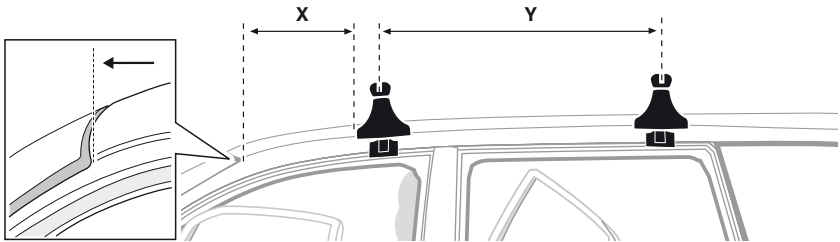
MITSUBISHI Lancer, 4-dr Sedan, 96-99



5



	X mm	Y mm	X inch	Y inch
MITSUBISHI Lancer, 4-dr Sedan, 96-99	230 mm	650 mm	9 "	25 5/8 "



GB/US Tighten alternately

D Die Schrauben abwechselnd anziehen

F Serrer alternativement chaque côté

NL Afwisselend aan de linker- en de rechterkant aandraaien

I Alternare il serraggio delle viti

E Apertar alternativamente

PT Aperte alternadamente

S Dra åt växelvis

FIN Kierrä vuorotellen

EST Pinguldage vaheldumisi

LAT Pielieciet pamišus

LIT Užsukinėkite pakaitomis

PL Śruby dokręcaj naprzemiennie

RU Затягивайте попеременно

CZ Pokręťta bagażnika dokręcaj dokręcaj naprzemiennie.

SK Doťahujte striedavo

SLO Privijajte izmenično.

HR Naizmjenično zategnite

HU Egymástól függetlenül szorítandó

GR Σφιγγετε εναλλάξ

TR Dönüşümlü sıkın

中文 交替拧紧

한국어 번갈아 가며 조이십시오.

日本語 交互に締め付けてください。

ไทย ชันโนแบบสลับ

6



480R/754



480



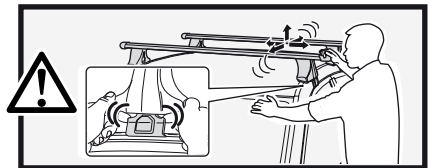
*
3 Nm



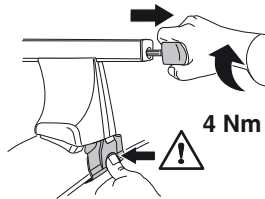
*



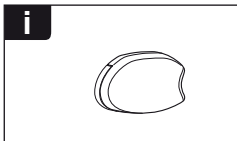
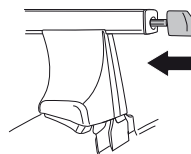
*
≈ 3 Nm



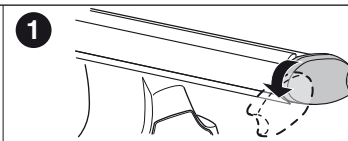
750



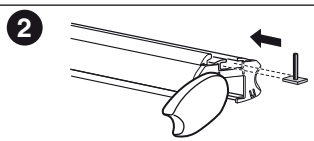
4 Nm



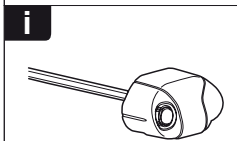
i



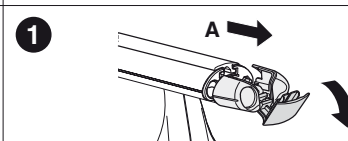
1



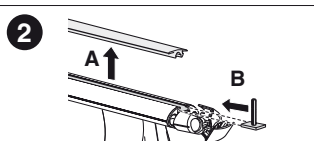
2



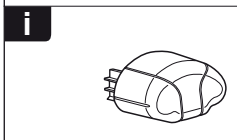
i



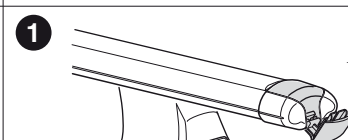
1



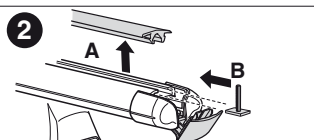
2



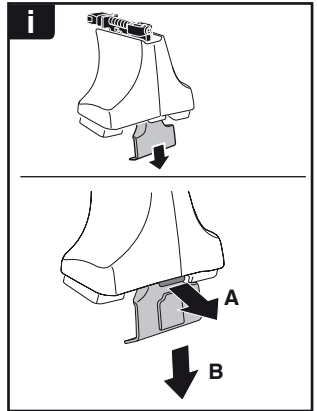
i



1



2



THULE
SWEDEN
**ONE
KEY
SYSTEM**



- 544 (x4)
- 596 (x6)
- 588 (x8)
- NA 510 (x10)
- EUR 452 (x12)
- ASIA



WW ▶ Thule Sweden AB, Box 69, 330 33 Hillerstorp, SWEDEN
NA ▶ Thule Inc., 42 Silvermine Road, Seymour, Connecticut 06483, USA

info@thule.com
customer.service@thule.com

www.thule.com